

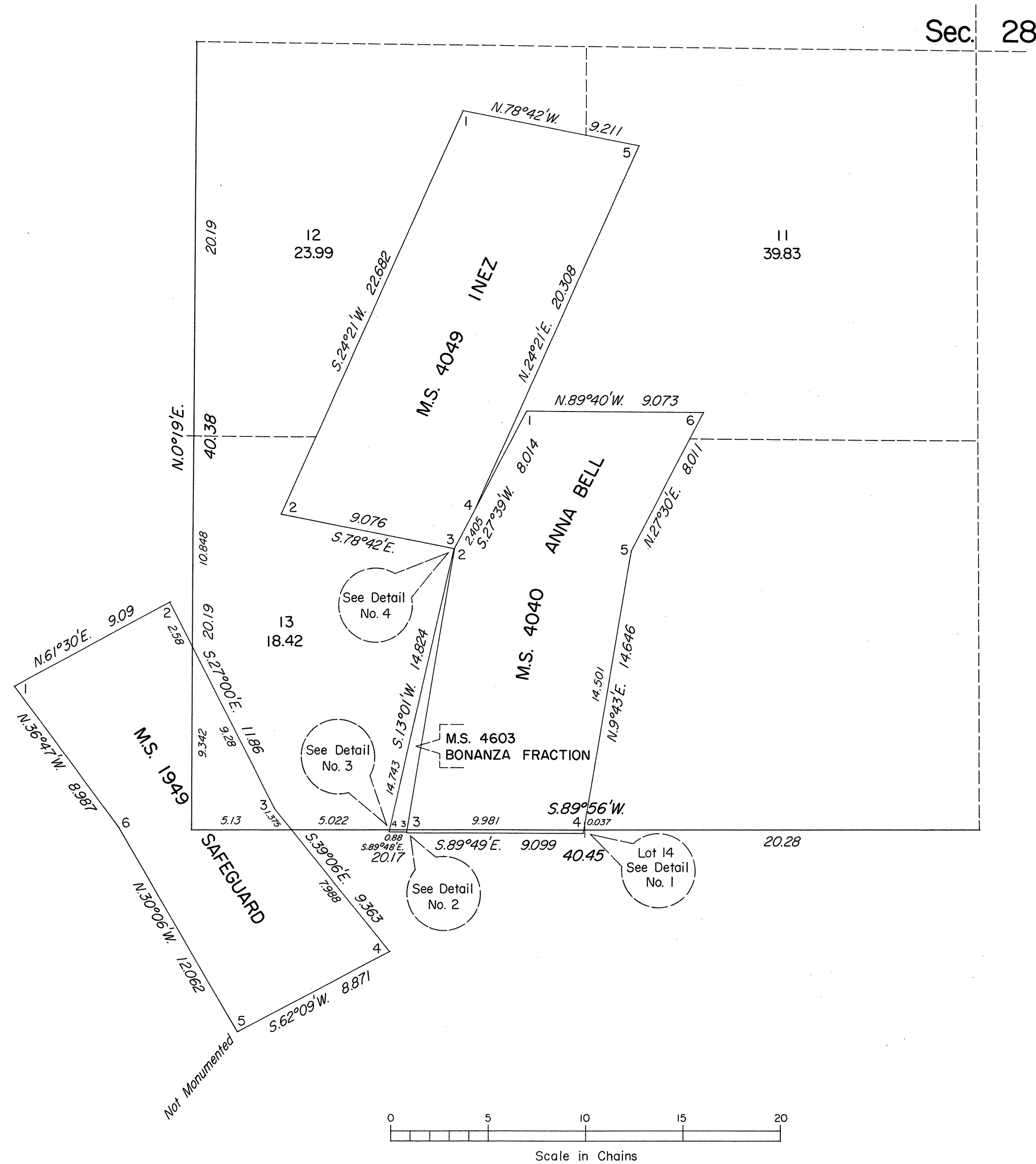
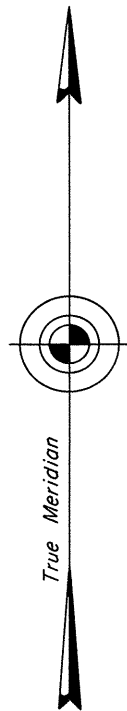
ORIGINAL

Sheet No. 3 of 3 Sheets

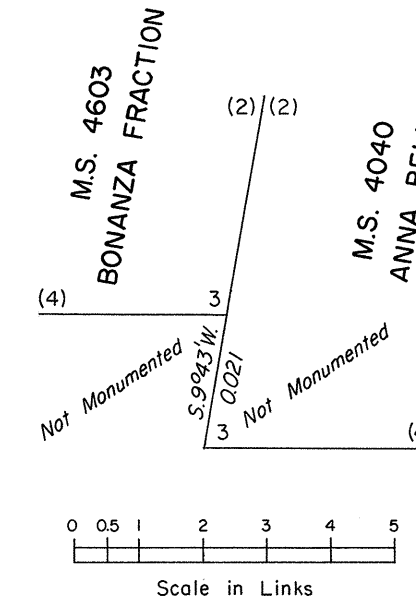
TOWNSHIP 20 NORTH, RANGE 20 EAST, OF THE MOUNT DIABLO MERIDIAN, NEVADA

ENLARGED DIAGRAM OF SW $\frac{1}{4}$ SEC. 28

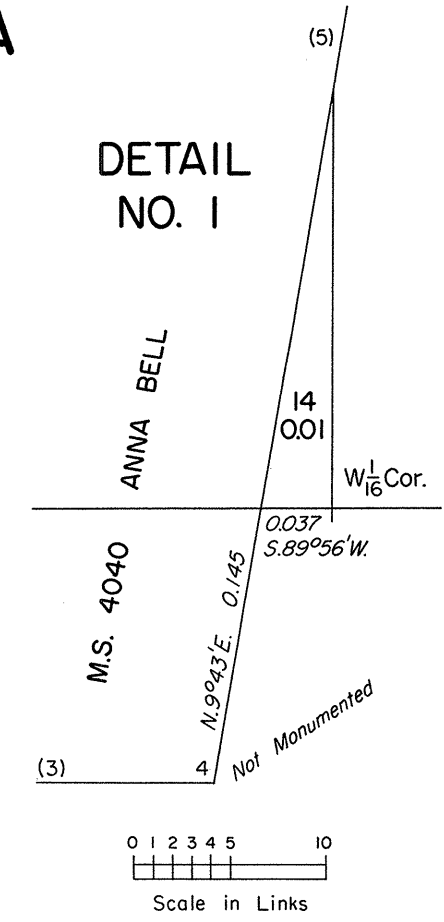
OFFICIALLY FILED
NEVADA STATE OFFICE
10:00 a.m., March 25, 1980



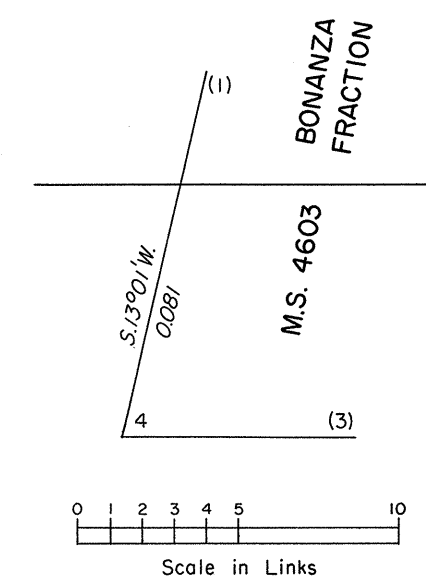
DETAIL NO. 2



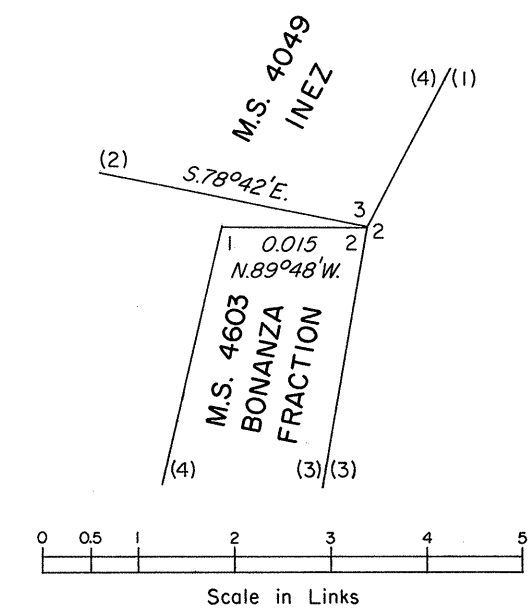
DETAIL NO. 1



DETAIL NO. 3



DETAIL NO. 4



Reference should be made to Sheet No. 1 for survey information.

UNITED STATES DEPARTMENT OF THE INTERIOR
BUREAU OF LAND MANAGEMENT
Denver, Colorado February 25, 1980

This plat is strictly conformable to the approved field notes, and the survey, having been correctly executed in accordance with the requirements of law and the regulations of this Bureau, is hereby accepted.

For the Director

J. D. Voorhees

Chief, Cadastral Survey
Examination and Approval Staff