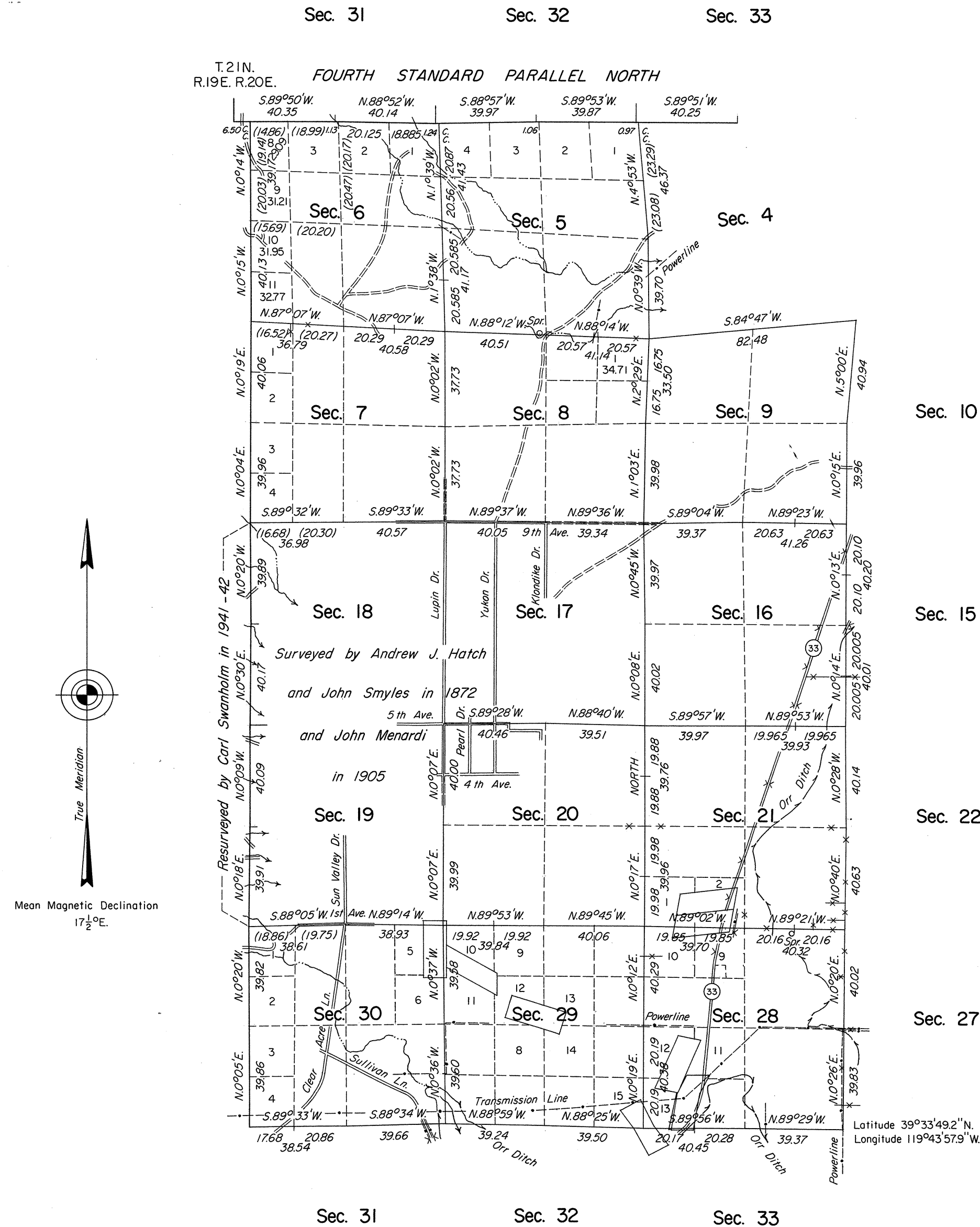


TOWNSHIP 20 NORTH, RANGE 20 EAST, OF THE MOUNT DIABLO MERIDIAN, NEVADA  
DEPENDENT RESURVEY

A history of surveys is contained in the field notes.

This plat, in three sheets, represents a dependent resurvey of the Fourth Standard Parallel North, through a portion of R. 20 E., and a portion of the west boundary and a portion of the subdivisional lines of T. 20 N., R. 20 E., Mount Diablo Meridian, Nevada, designed to restore the corners in their true original locations according to the best available evidence; the retracement and remonumentation of Mineral Survey Nos. 1949, 2065, 2066 and 2067; the retracement and remonumentation of certain corners of a portion of Mineral Survey Nos. 4040, 4049 and 4603; and the retracement of a portion of Mineral Survey No. 4849.

Lottings and areas, except as shown hereon, are as shown on the plats approved June 30, 1872, February 19, 1907 and May 25, 1908, and supplemental plats approved January 27, 1903 and April 17, 1903.

Unless otherwise indicated in the field notes, all courses and distances shown on the plat along the perimeter of the mineral segregation areas, were taken or computed from the appropriate Mineral Survey record. See Sheet Nos. 2 and 3 for enlargements of sections 21, 28, 29 and 30.

Survey executed by Eldon W. Sibley and Ronald K. Baugh, Cadastral Surveyors, beginning August 30, 1976, and completed June 1, 1977, under Special Instructions dated August 27, 1976, and Supplemental Special Instructions dated May 26, 1977, for Group No. 544, Nevada.

Surveyed by Andrew J. Hatch

and John Smyles in 1872

and John Menardi in 1905

UNITED STATES DEPARTMENT OF THE INTERIOR  
BUREAU OF LAND MANAGEMENT  
Denver, Colorado February 25, 1980

This plat is strictly conformable to the approved field notes, and the survey, having been correctly executed in accordance with the requirements of law and the regulations of this Bureau, is hereby accepted.

For the Director

*J. V. Venter*

Chief, Cadastral Survey  
Examination and Approval Staff