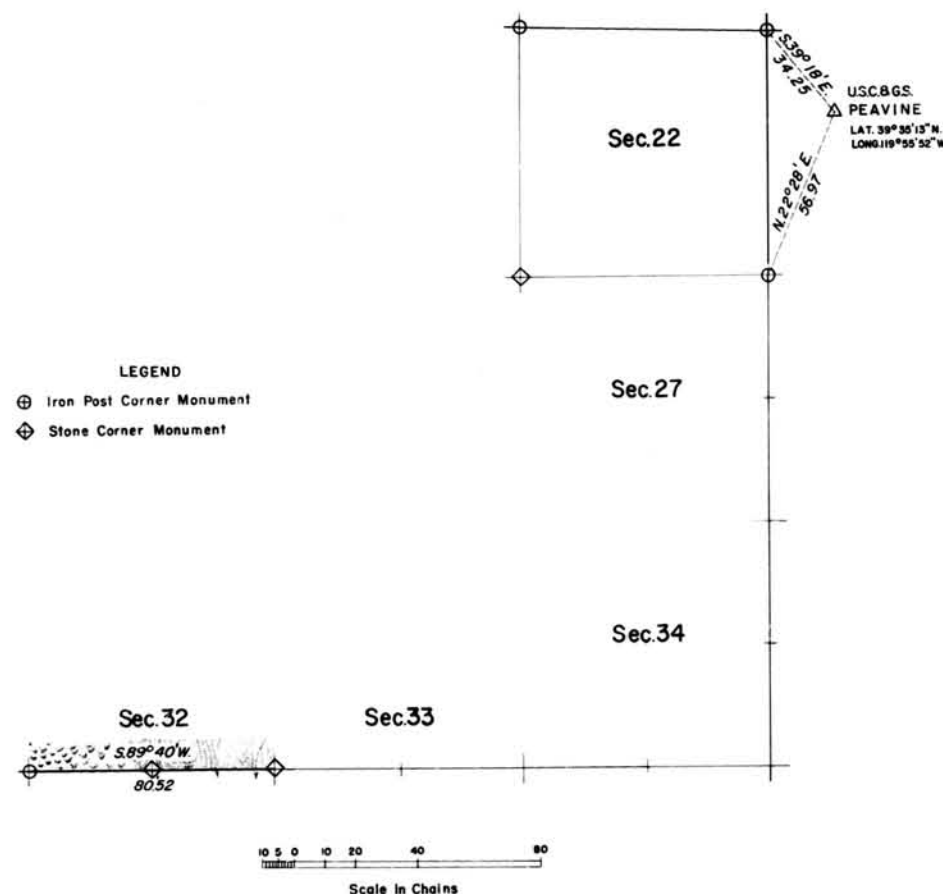


TOWNSHIP 20 NORTH, RANGE 18 EAST, OF THE MOUNT DIABLO MERIDIAN, NEVADA.
DEPENDENT RESURVEY AND RETRACEMENT

RECEIVED
LAND AND SURVEY OFFICE
FEDERAL BUREAU OF SURVEY
MAY 27 1955



This plat represents the dependent re-survey of the south boundary of section 32 designed to restore the corners in their original locations according to the best available evidence, and the remonumentation of the section corners of section 22.

Survey executed by Carl S. Swanholm Sept. 18, 1943 to October 3, 1945, under special instructions for Group 312, Nevada, dated April 23, 1941.

UNITED STATES DEPARTMENT OF THE INTERIOR
BUREAU OF LAND MANAGEMENT
Washington, D. C. December 28, 1955

This plat is strictly conformable to the approved field notes, and the survey, having been correctly executed in accordance with the requirements of law and the regulations of this Bureau, is hereby accepted.

For the Director

Donald Clement

Acting Cadastral Engineering Staff Officer

0033-A

T20 N R18 E