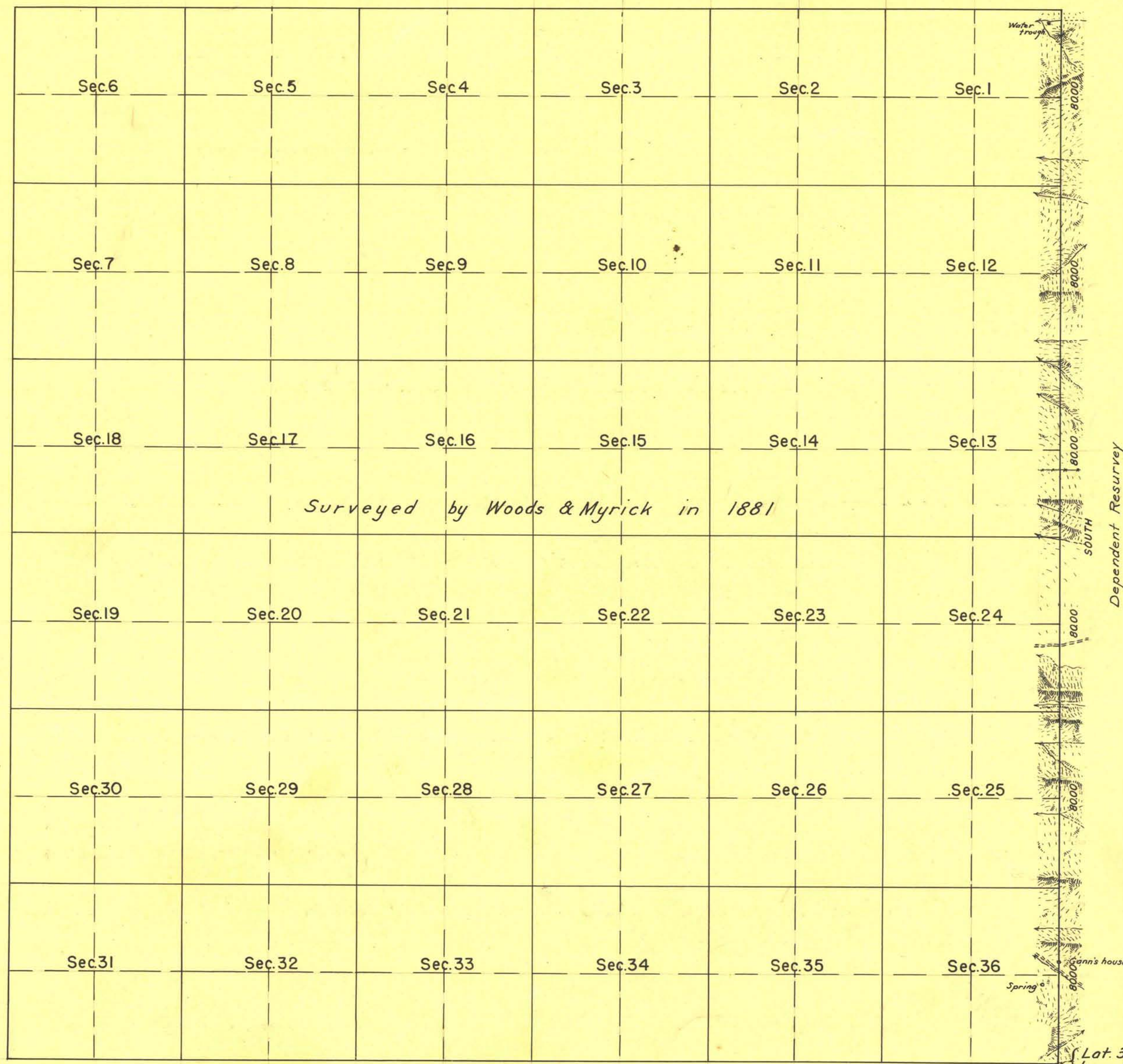


TOWNSHIP N° 19 SOUTH, RANGE N° 69 EAST, OF THE MOUNT DIABLO MERIDIAN, NEVADA.



1050 10 20 40 80
Scale: 40 Chains to an Inch

LINES DESIGNATED	BY WHOM SURVEYED	GROUP		MILEAGE MLS. CHS.	WHEN SURVEYED	
		N°	DATE		BEGUN	COMPLETED
Exterior E. Bdy.	James W. Hardison and Wilson McConkie	256	Oct. 7 1938	6 0.0	Feb. 20 1939	April 4 1939

UNITED STATES DEPARTMENT OF THE INTERIOR
GENERAL LAND OFFICE

DENVER, COLORADO, NOVEMBER 1, 1944.
THIS PLAT OF TOWNSHIP NO. 19 SOUTH, RANGE NO. 69 EAST, OF THE MOUNT DIABLO MERIDIAN, NEVADA, IS STRICTLY CONFORMABLE TO THE FIELD NOTES OF THE RESURVEY THEREOF WHICH HAVE BEEN EXAMINED AND APPROVED.

WASHINGTON, D. C., JAN 30 1945
THE SURVEY REPRESENTED BY THIS PLAT HAVING BEEN CORRECTLY EXECUTED IN ACCORDANCE WITH THE REQUIREMENTS OF LAW AND THE REGULATIONS OF THIS OFFICE, IS HEREBY ACCEPTED.

W. H. Horton
SUPERVISOR OF SURVEYS

Joel David Wolfson
ASSISTANT COMMISSIONER

T. 19 S., R. 69 E.