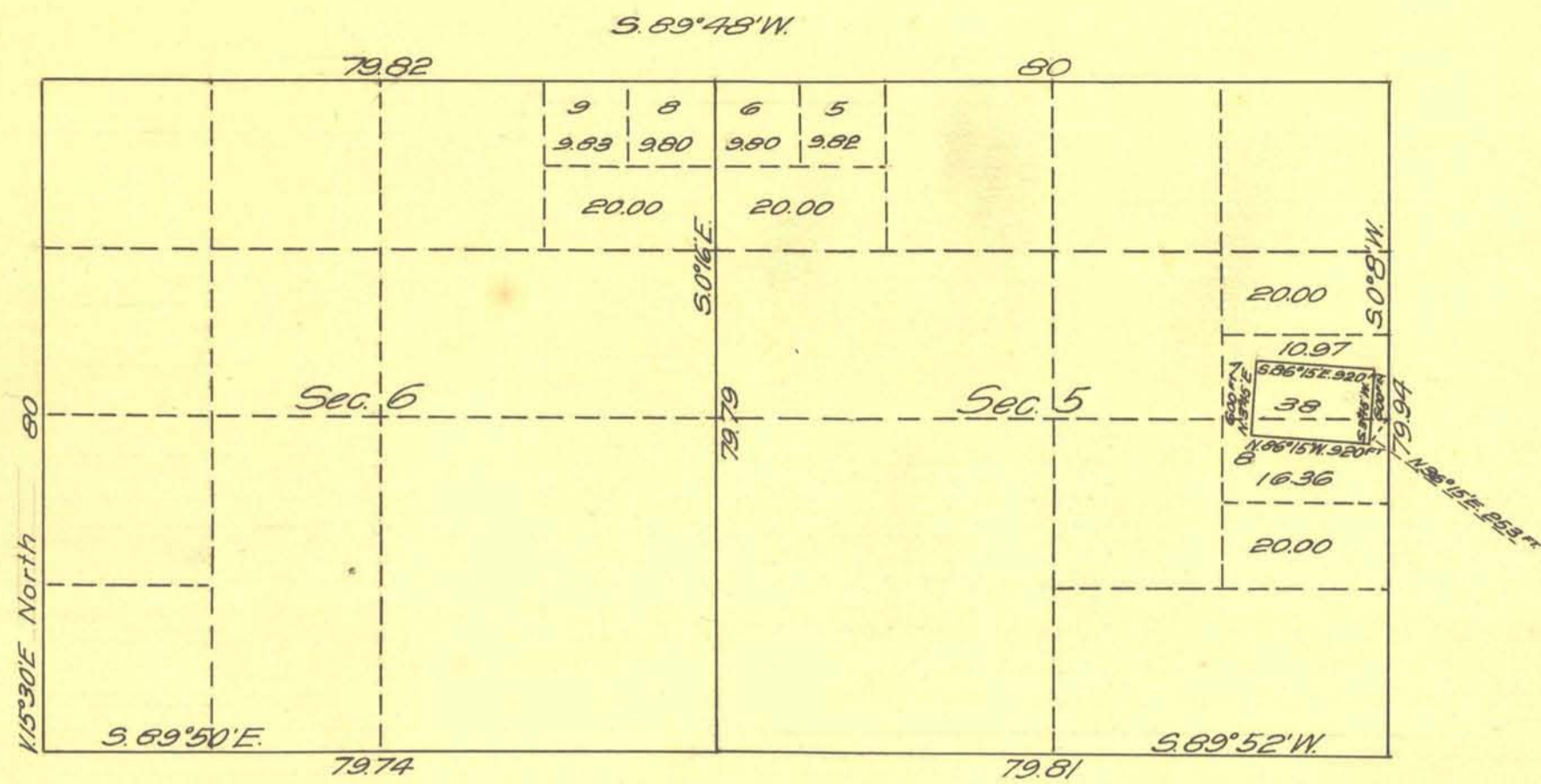
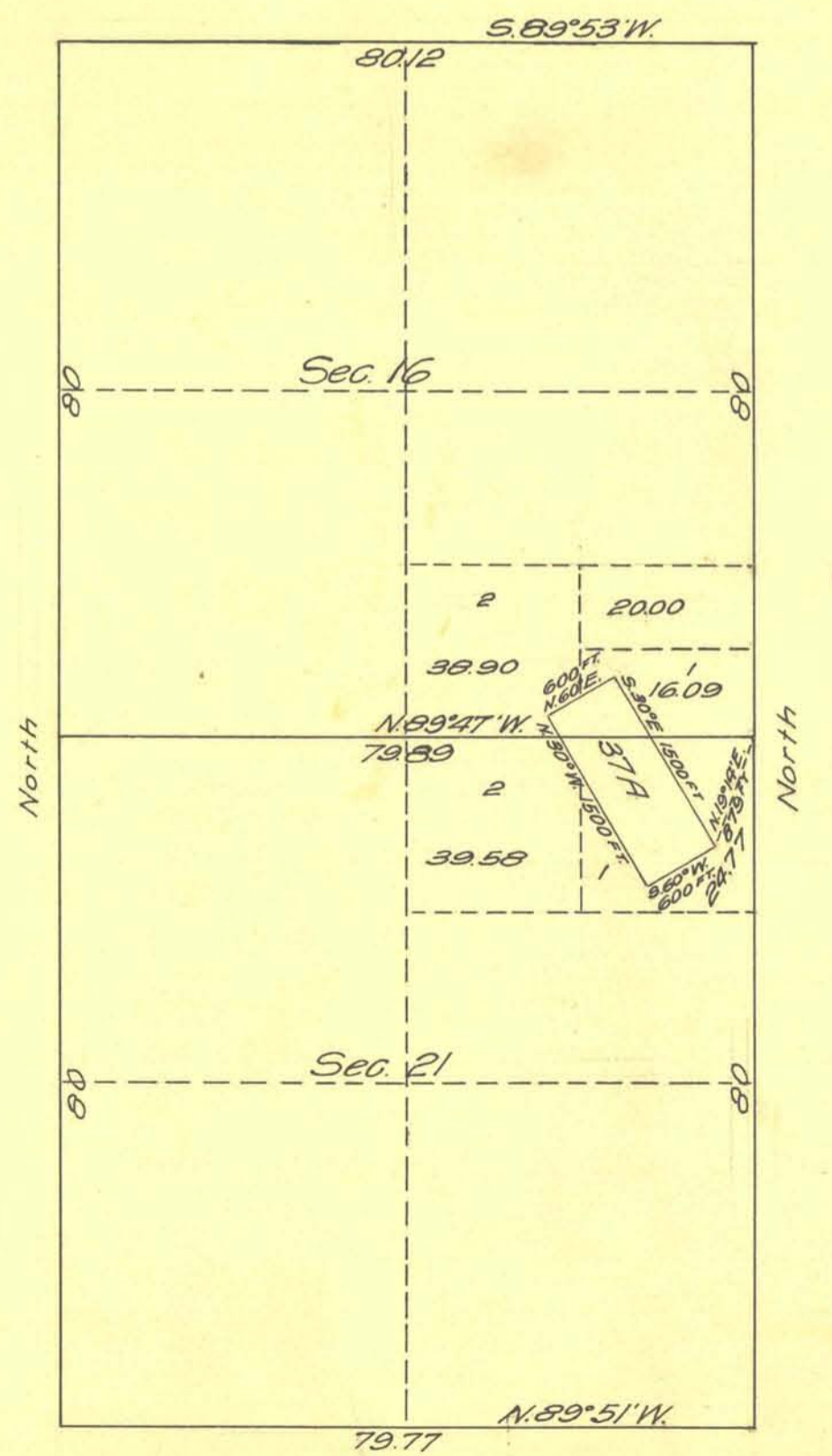


Supplemental Plat of T.19 South, R. N^o 68 East, M^t Diablo Meridian, Nevada.



ST THOMAS MINING DISTRICT			
No.	LODE	CLAIMANT	AREA
37A	Colorado	South Western Mining Co.	20.66
38	Recluse		12.67



Scale 20 Chs = 1 in

CERTIFICATE
 I hereby certify that this Supplemental Plat of T19S,
 R68E has been prepared in compliance with instruc-
 tions from the Commissioner of the General Land
 Office contained in letter E(JAD) dated February 8,
 1915.
 U.S. Surveyor General's Office,
 Reno, Nevada,
 March 1, 1915.

John B. Sullivan
 U.S. Sur. Genl for Nevada.