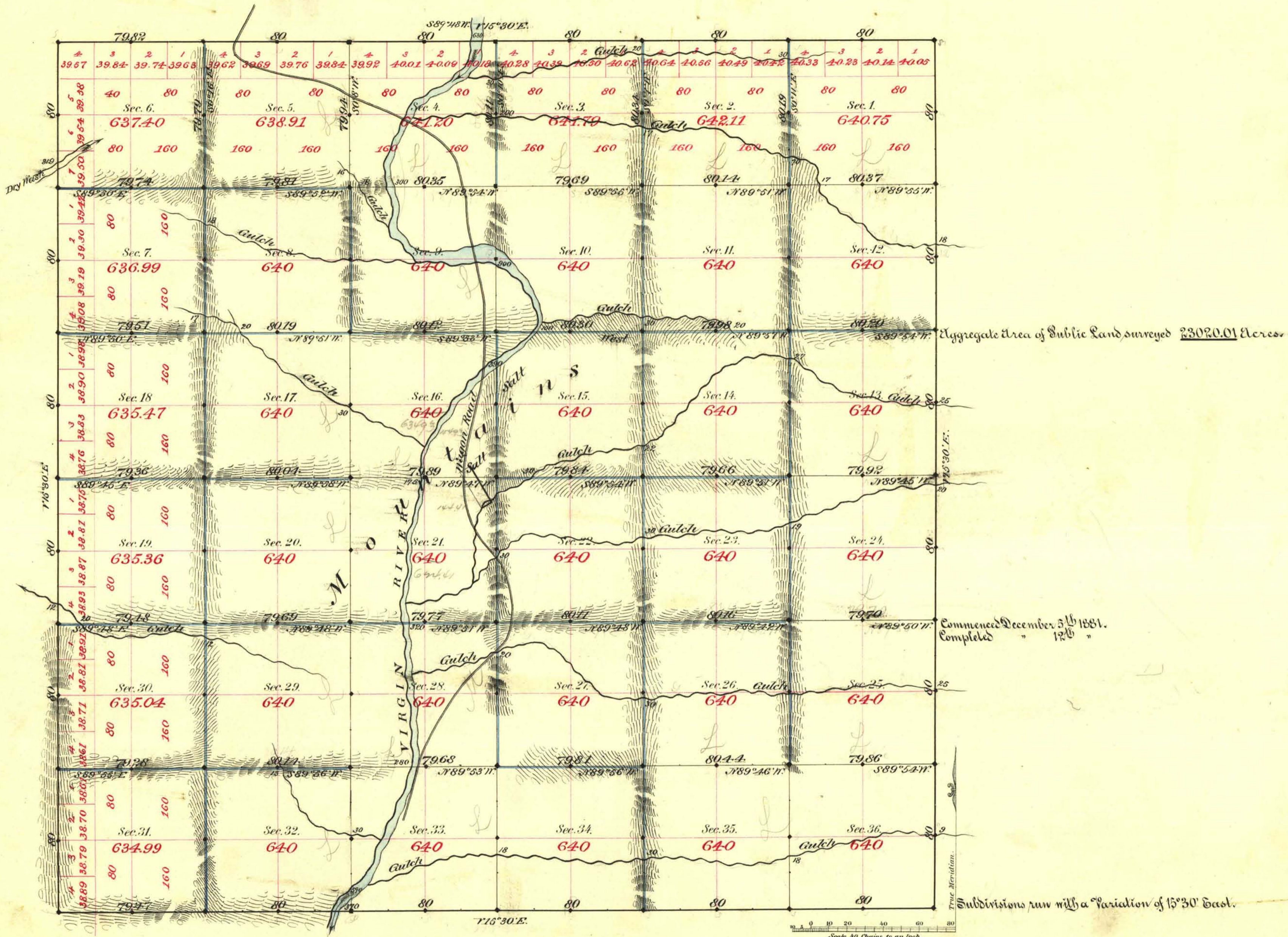


TOWNSHIP N^o 19 SOUTH RANGE N^o 68 EAST MOUNT DIABLO MERIDIAN



Surveys Designated	By Whom Surveyed	Date of Contract	Amount of Surveys	When Surveyed
Township lines	Hoods & Myrick	January 30 th 1881	36	1881
Subdivisions, black			17-79-28	December
blue			41-77-71	

7th Cor
109

The above Map of Township N^o 19 South of Range N^o 68 East of Mt. Diablo Meridian is strictly conformable to the field notes of the survey thereof on file in this Office, which have been examined and approved.

Surveyor General's Office,
Reno, Nevada

W. S. Davis
Sur. Gen. Nev

March 27th 1882