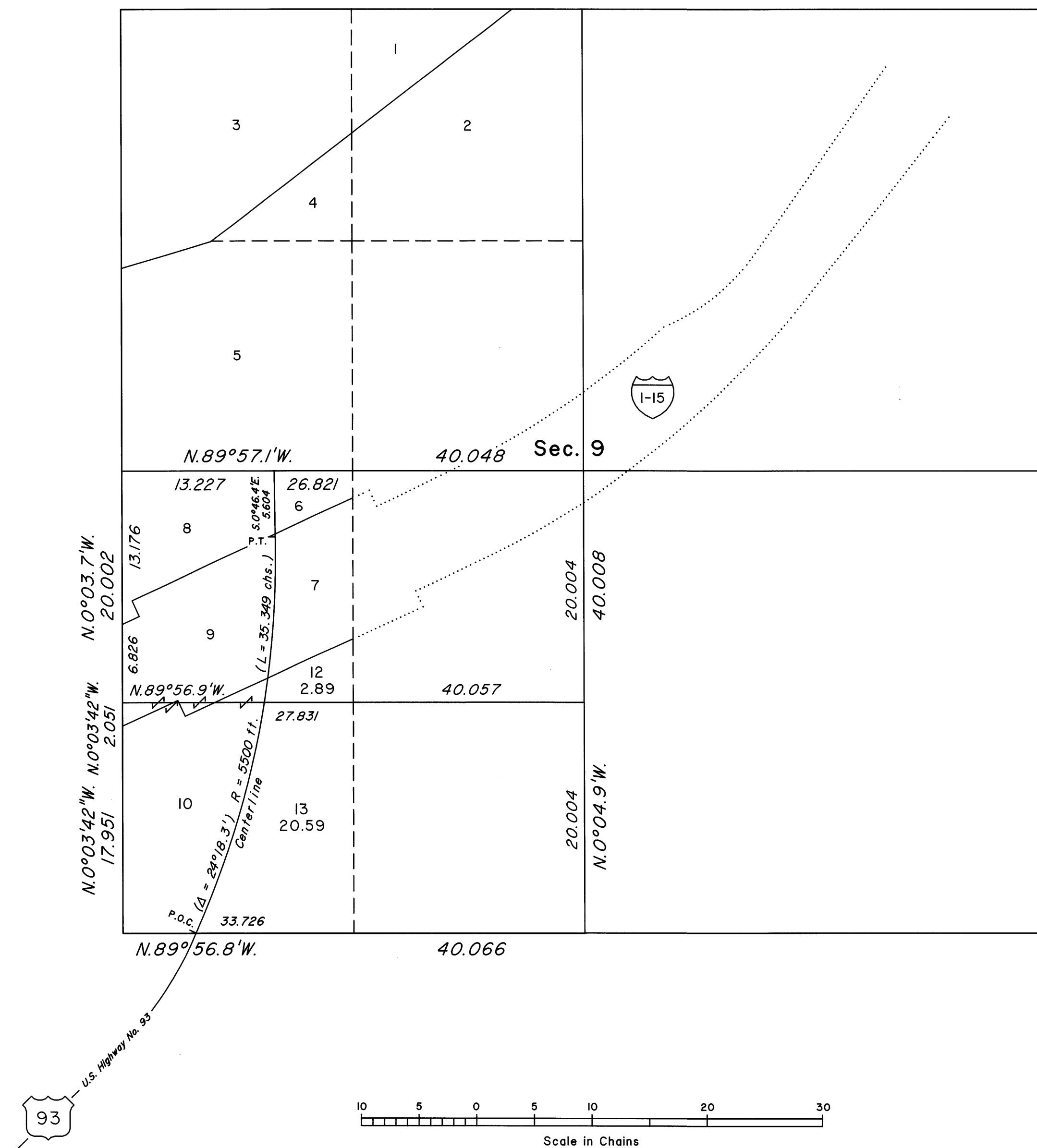
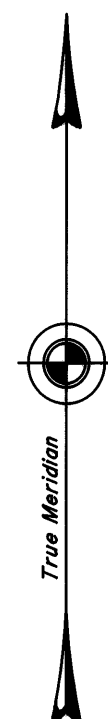


ORIGINAL

OFFICIALLY FILED
NEVADA STATE OFFICE
at 10:00 AM on JANUARY 21, 1999

TOWNSHIP 19 SOUTH, RANGE 63 EAST, OF THE MOUNT DIABLO MERIDIAN, NEVADA
SUPPLEMENTAL PLAT OF SECTION 9



This plat, showing amended lottings in section 9, T.19S., R.63E., Mount Diablo Meridian, Nevada, is based on the plats accepted July 12, 1935, August 12, 1997, and January 19, 1999.

Certain lottings were computed using State of Nevada, Department of Highways Right-of-Way plans for U.S. Highway No. 93 (Project No. S-544 (15)) and Interstate Highway No. I-15 (Project No. I-015-I-7)43).

For those surveyed lines not showing bearings and distances, refer to the official 1935 and 1997 surveys.

UNITED STATES DEPARTMENT OF THE INTERIOR
BUREAU OF LAND MANAGEMENT

Reno, Nevada January 19, 1999

This plat, showing amended lottings, is based upon the official records, and having been correctly prepared in accordance with the regulations of the Bureau, is hereby accepted.

For the Director

David J. Clark

Chief Cadastral Surveyor, Nevada

T.19S., R.63E., M.D.M.