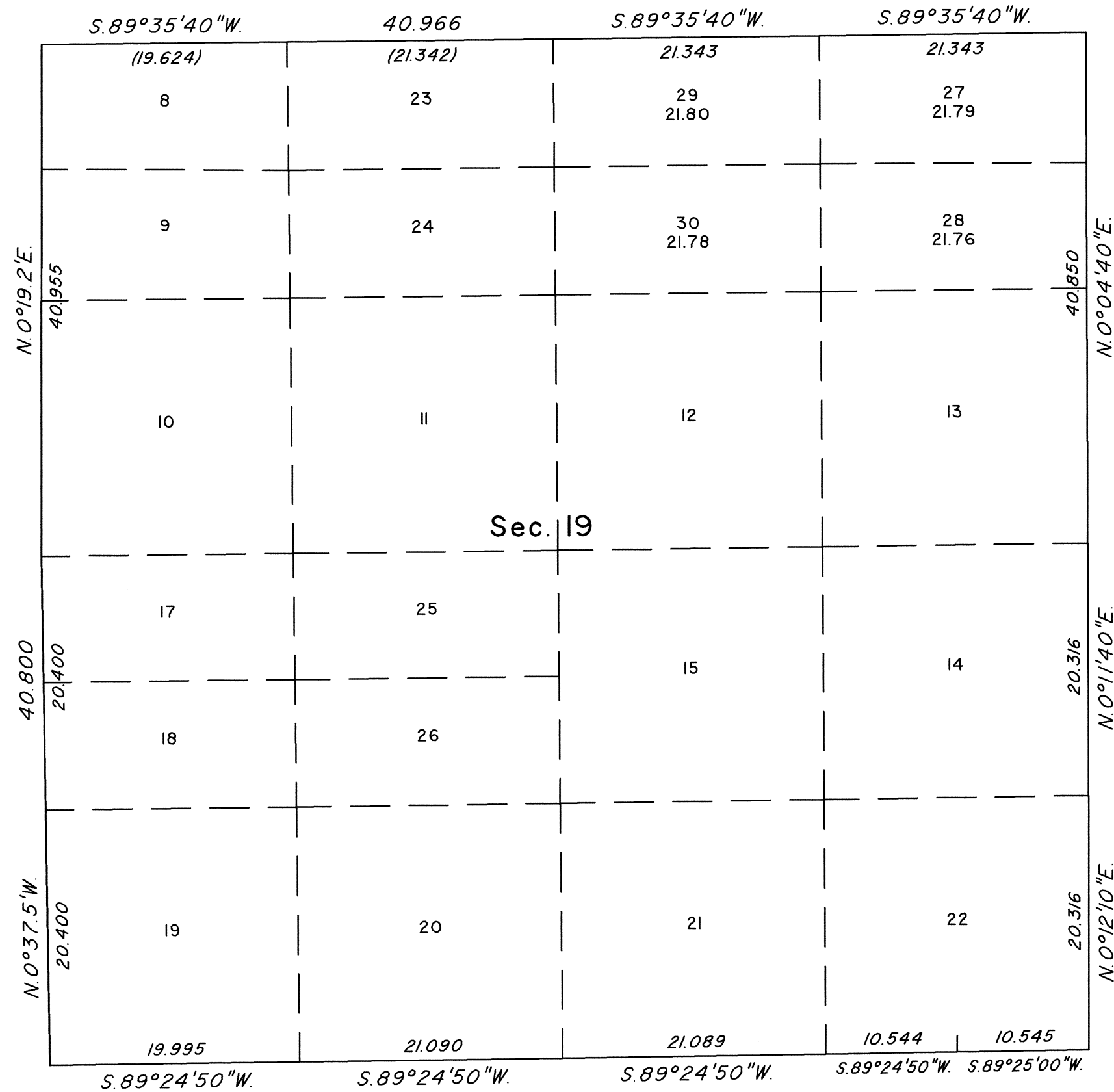
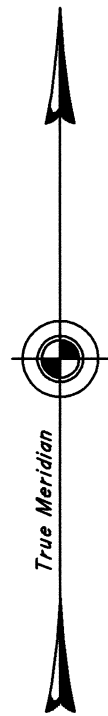


TOWNSHIP 19 SOUTH, RANGE 62 EAST, OF THE MOUNT DIABLO MERIDIAN, NEVADA  
SUPPLEMENTAL PLAT OF SECTION 19



This plat, showing the subdivision of former lots 5 and 6, section 19, Township 19 South, Range 62 East, Mount Diablo Meridian, Nevada, is based on the plats accepted October 21, 1993, May 9, 2000, April 10, 2007, and March 4, 2014.

Plat prepared under the direction of Michael O. Harmening, Cadastral Surveyor, beginning March 29, 2024, and completed April 2, 2024, pursuant to Special Instruction dated March 26, 2024, and Assignment Instructions dated March 27, 2024, for Group No. 1015, Nevada.

Except as indicated hereon, the lottings and areas are as shown on the plats accepted April 10, 2007, and March 4, 2014.

UNITED STATES DEPARTMENT OF THE INTERIOR  
BUREAU OF LAND MANAGEMENT  
Reno, Nevada July 18, 2024

This plat showing amended lottings is based upon the official records and, having been correctly prepared in accordance with the requirements of law and the regulations of this Bureau, is hereby accepted.

For the Director

*Clarence Strickland*  
Chief Cadastral Surveyor for Nevada

