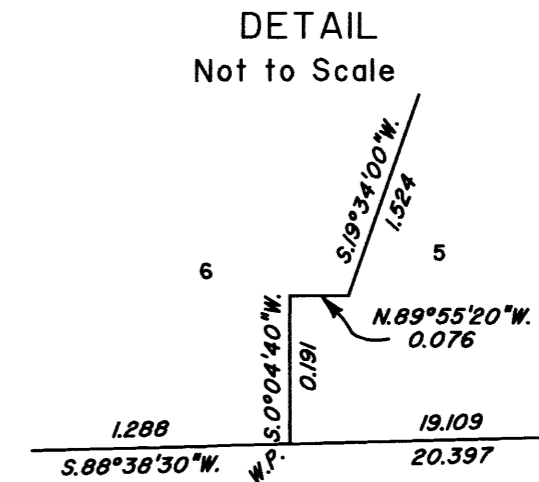
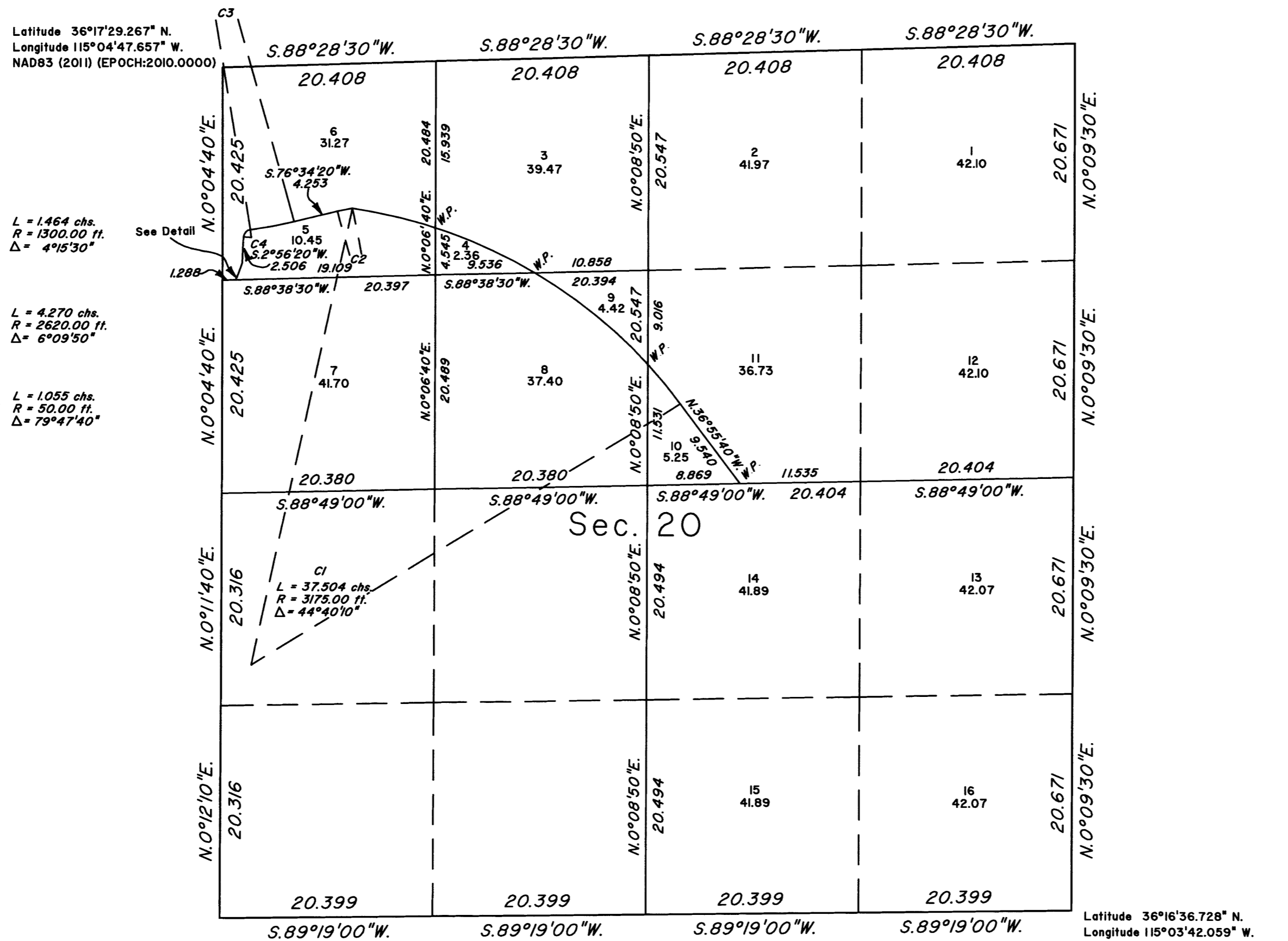


TOWNSHIP 19 SOUTH, RANGE 62 EAST, OF THE MOUNT DIABLO MERIDIAN, NEVADA
DEPENDENT RESURVEY, SUBDIVISION AND METES-AND-BOUNDS SURVEY



A history of surveys is contained in the field notes.

This plat represents the dependent resurvey of a portion of the subdivisional lines designed to restore the corners in their true original locations according to the best available evidence, the subdivision of section 20, and a metes-and-bounds survey of a portion of the southerly right-of-way of Clark County Highway No. 215 in section 20, Township 19 South, Range 62 East, Mount Diablo Meridian, Nevada.

Except as shown hereon, the lottings and official areas are as shown on the plat approved April 28, 1882.

Survey executed by Lee T. Wilson, Cadastral Surveyor, beginning March 27, 2017 and completed November 20, 2017, pursuant to Special Instructions dated March 22, 2017, for Group No. 968, Nevada.

UNITED STATES DEPARTMENT OF THE INTERIOR
BUREAU OF LAND MANAGEMENT

Reno, Nevada January 25, 2018

This plat is strictly conformable to the approved field notes, and the survey, having been correctly executed in accordance with the requirements of law and the regulations of this Bureau, is hereby accepted.

For the Director

Chief Cadastral Surveyor for Nevada

