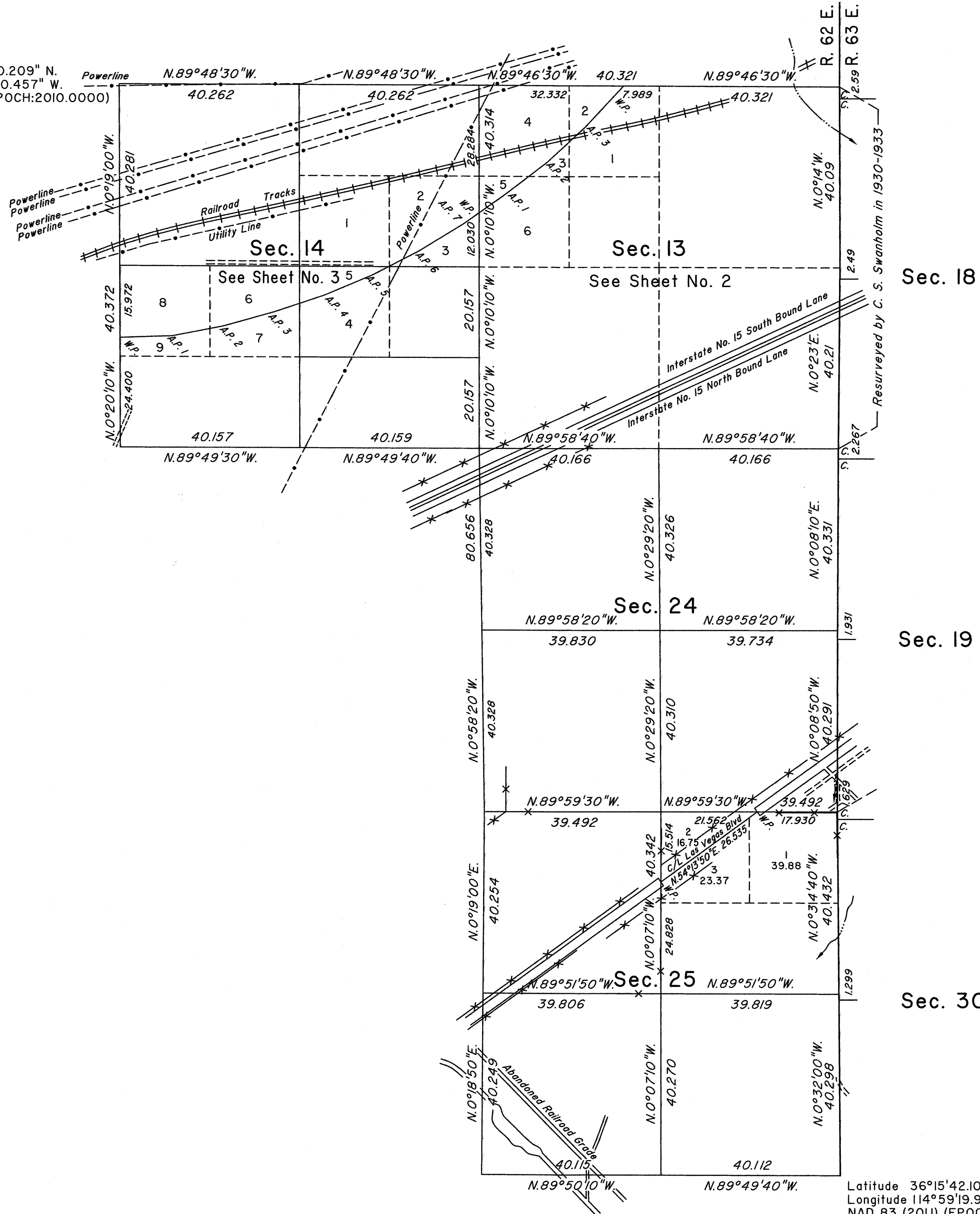


TOWNSHIP 19 SOUTH, RANGE 62 EAST, OF THE MOUNT DIABLO MERIDIAN, NEVADA
AMENDED PLAT

OFFICIALLY FILED
NEVADA STATE OFFICE
at 10:00 AM on OCT 25 2016

Latitude 36°18'20.209" N.
Longitude 115°01'30.457" W.
NAD 83 (2011) (EPOCH:2010.0000)



Sec. 18

Sec. 19

Sec. 30

This plat corrects the bearing between the 1/4 section corner of section 24 and the corner of sections 13 and 24, on the east boundary of Township 19 South, Range 62 East, Mount Diablo Meridian, Nevada, as shown on sheet No. 1 of 3 on the official plat accepted September 1, 2016. The bearing is based on the amended field notes as authorized by memorandum from the Chief Cadastral Surveyor for Nevada, dated October 14, 2016, File 9600(NV952).

UNITED STATES DEPARTMENT OF THE INTERIOR
BUREAU OF LAND MANAGEMENT

Reno, Nevada October 17, 2016

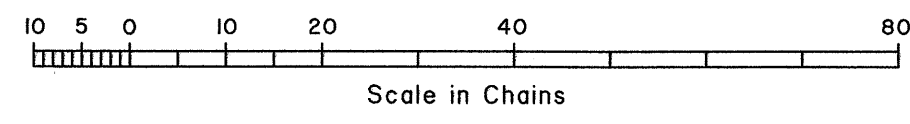
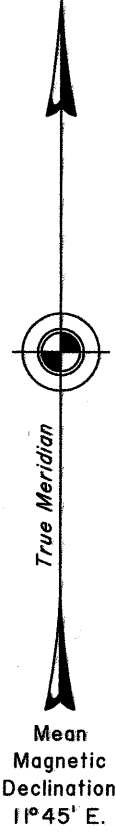
This plat is strictly conformable to the approved field notes, and the survey, having been correctly executed in accordance with the requirements of law and the regulations of this Bureau, is hereby accepted.

For the Director

Michael O. Hammering

Chief Cadastral Surveyor for Nevada

Latitude 36°15'42.103" N.
Longitude 114°59'19.954" W.
NAD 83 (2011) (EPOCH:2010.0000)



CWM