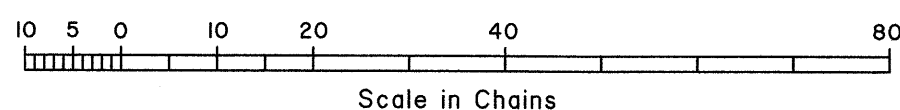
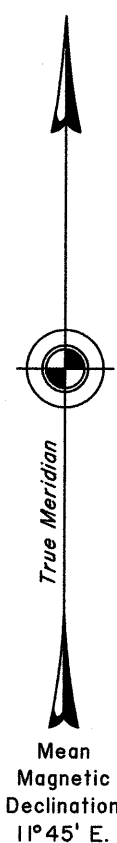
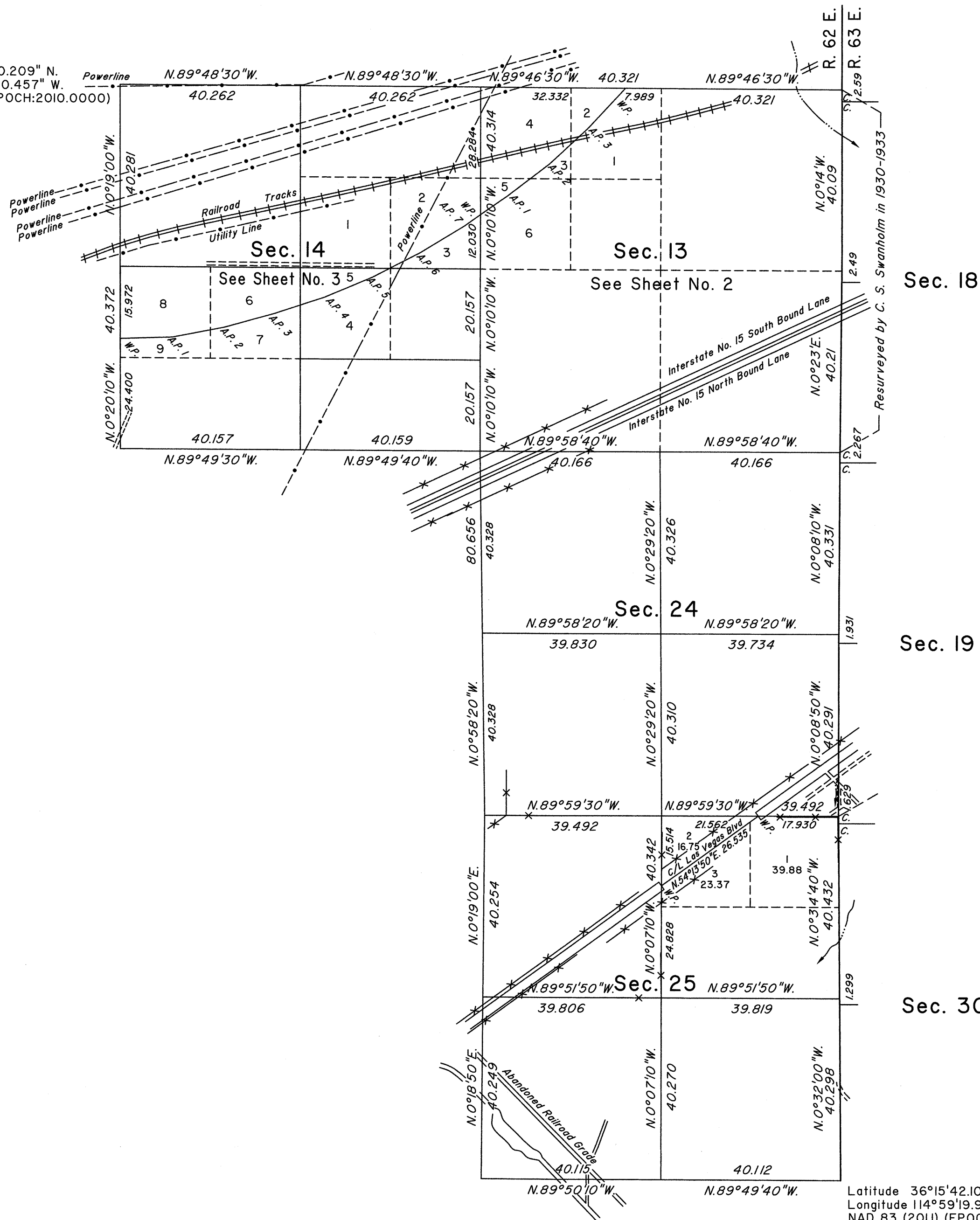


TOWNSHIP 19 SOUTH, RANGE 62 EAST, OF THE MOUNT DIABLO MERIDIAN, NEVADA

DEPENDENT RESURVEY, SUBDIVISION AND METES-AND-BOUNDS SURVEYS

Latitude 36°18'20.209" N.
Longitude 115°01'30.457" W.
NAD 83 (2011) (EPOCH:2010.0000)



A history of surveys is contained in the field notes.

This plat, in three sheets, represents the dependent resurvey of a portion of the east boundary and a portion of the subdivisional lines designed to restore the corners in their true original locations according to the best available evidence, the subdivision of sections 14, 24 and 25, a metes-and-bounds survey through sections 13 and 14, and a metes-and-bounds survey of a portion of the centerline of Las Vegas Boulevard in section 25, Township 19 South, Range 62 East, Mount Diablo Meridian, Nevada.

Except as indicated hereon, the lottings and areas are as shown on the plat approved April 28, 1882.

Survey executed by Lee T. Wilson, Cadastral Surveyor, beginning December 2, 2015 and completed March 16, 2016, pursuant to Special Instructions dated November 2, 2015, for Group No. 959, Nevada.

UNITED STATES DEPARTMENT OF THE INTERIOR
BUREAU OF LAND MANAGEMENT

Reno, Nevada September 1, 2016

This plat is strictly conformable to the approved field notes, and the survey, having been correctly executed in accordance with the requirements of law and the regulations of this Bureau, is hereby accepted.

For the Director

Chief Cadastral Surveyor for Nevada

Latitude 36°15'42.103" N.
Longitude 114°59'19.954" W.
NAD 83 (2011) (EPOCH:2010.0000)

OFFICIALLY FILED
NEVADA STATE OFFICE
at 10:00 AM on
SEP 12 2016