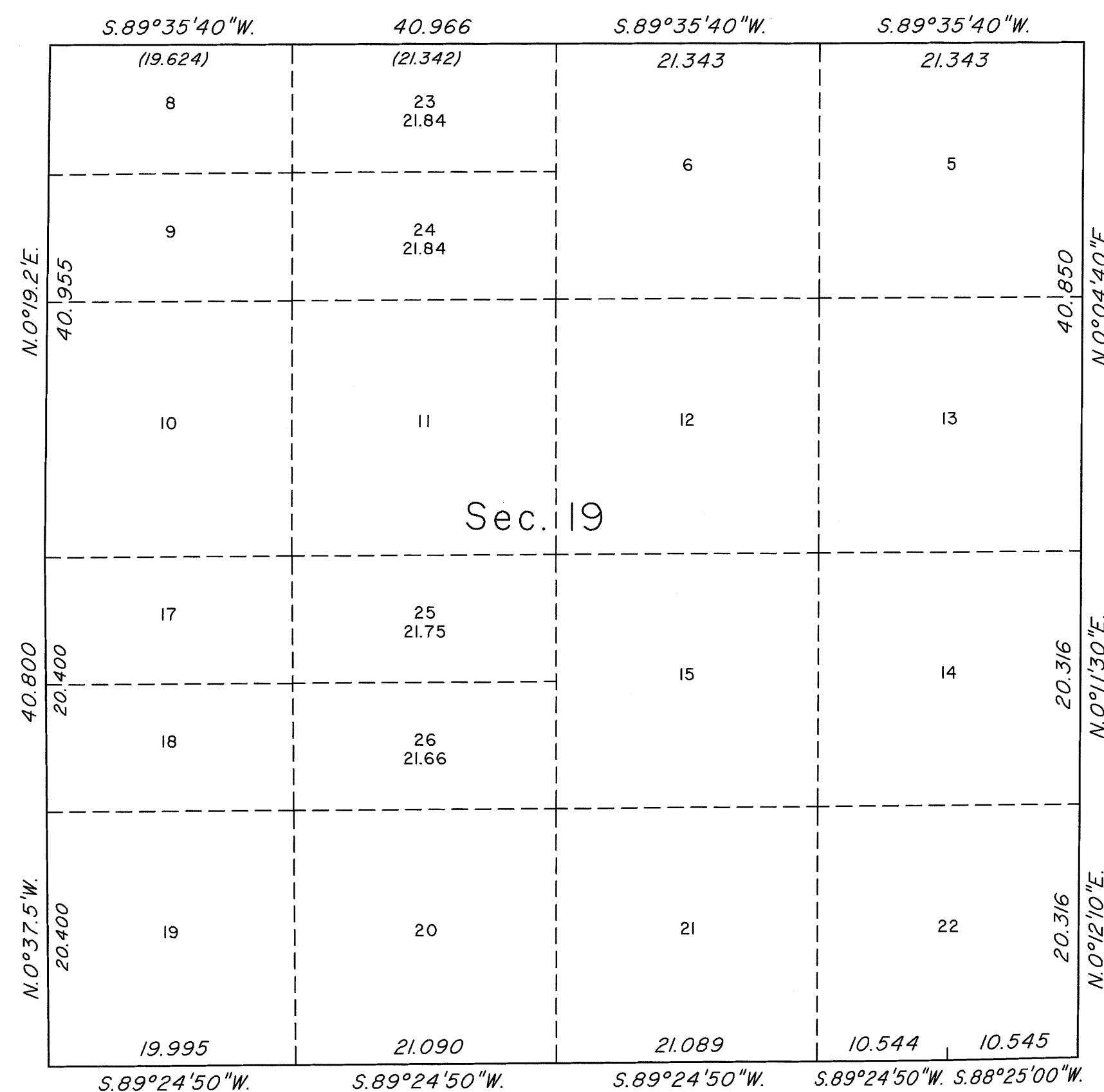


# TOWNSHIP 19 SOUTH, RANGE 62 EAST, OF THE MOUNT DIABLO MERIDIAN, NEVADA

## SUPPLEMENTAL PLAT OF SECTION 19



This plat, showing the subdivision of former lots 7 and 16, section 19, Township 19 South, Range 62 East, Mount Diablo Meridian, Nevada, based on the plats accepted October 21, 1993, May 9, 2000 and April 10, 2007, is prepared to accommodate the transfer of lands to the Secretary of Veterans Affairs under the provisions of Public Law 108-447 as amended by Public Law 110-161.

Plat prepared by Clay W. Morrow, Cartographic Technician, under the direction of Michael O. Harmening, Supervisory Cadastral Surveyor, on March 3, 2014, pursuant to Special Instructions dated March 3, 2014 and Assignment Instructions dated March 3, 2014, for Group No. 933 Nevada.

Except as indicated hereon, the lottings and areas are as shown on the plat accepted April 10, 2007.

UNITED STATES DEPARTMENT OF THE INTERIOR  
BUREAU OF LAND MANAGEMENT

Reno, Nevada March 4, 2014

This plat showing amended lottings is based upon the official records and, having been correctly prepared in accordance with the requirements of law and the regulations of the Bureau, is hereby accepted.

For the Director

Chief Cadastral Surveyor for Nevada

