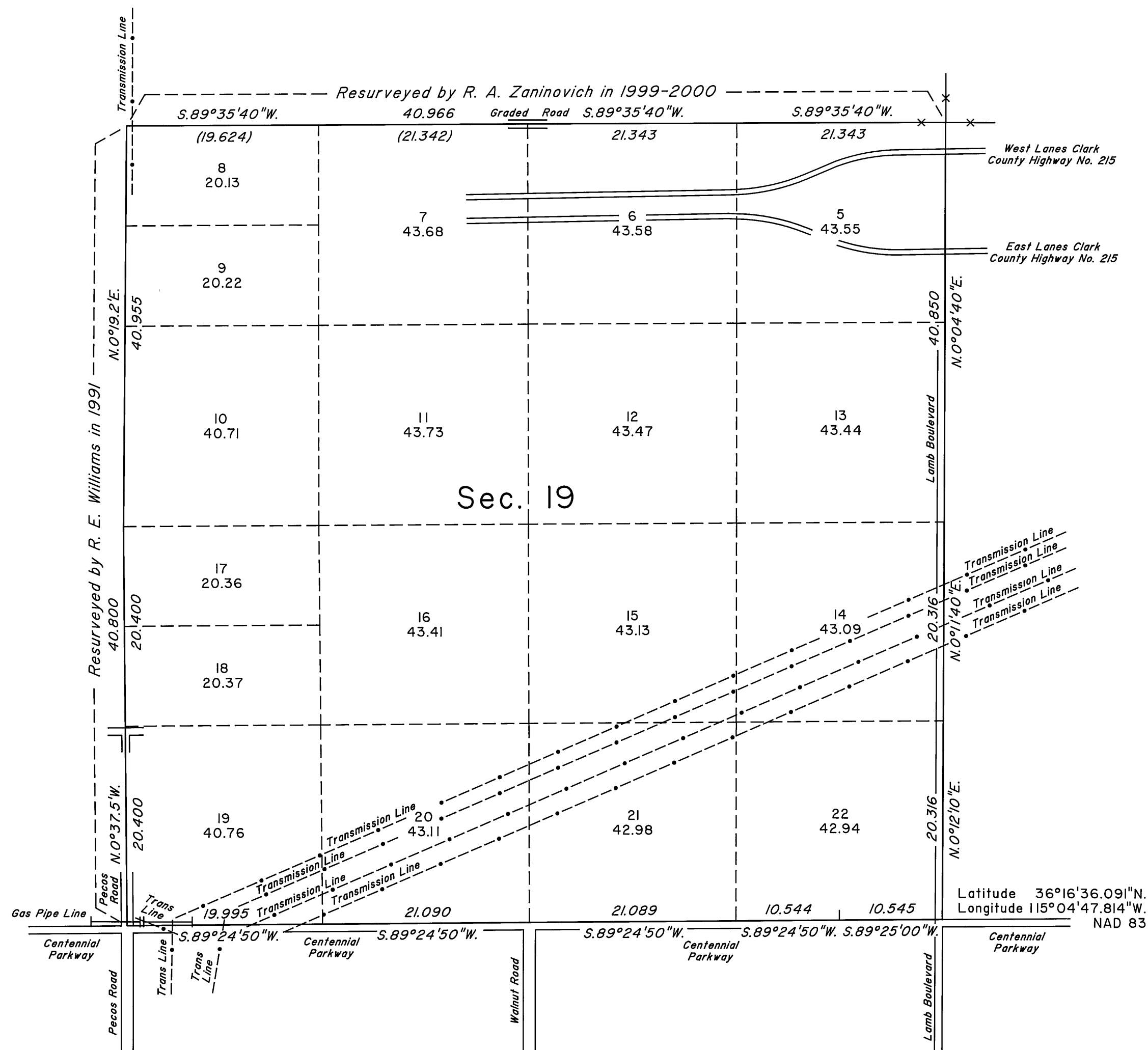
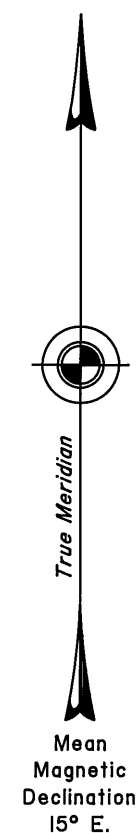


# TOWNSHIP 19 SOUTH, RANGE 62 EAST, OF THE MOUNT DIABLO MERIDIAN, NEVADA

## DEPENDENT RESURVEY



A history of surveys is contained in the field notes.

This plat represent the dependent resurvey of a portion of the subdivisonal lines of Township 19 South, Range 62 East, Mount Diablo Meridian, Nevada, designed to restore the corners in their true original locations according to the best available evidence.

Except as indicated hereon, the lottings and areas are as shown on the plat approved April 28, 1882, and the plat accepted May 9, 2000.

Survey executed by John E. Forsman, Professional Land Surveyor, beginning October 25, 2006, and completed December 14, 2006, pursuant to Special Instructions dated April 24, 2006, for Group No. 836, Nevada.

UNITED STATES DEPARTMENT OF THE INTERIOR  
BUREAU OF LAND MANAGEMENT

Reno, Nevada April 10, 2007

This plat is strictly conformable to the approved field notes, and the survey, having been correctly executed in accordance with the requirements of law and the regulations of this Bureau, is hereby accepted.

For the Director

Chief Cadastral Surveyor, Nevada

