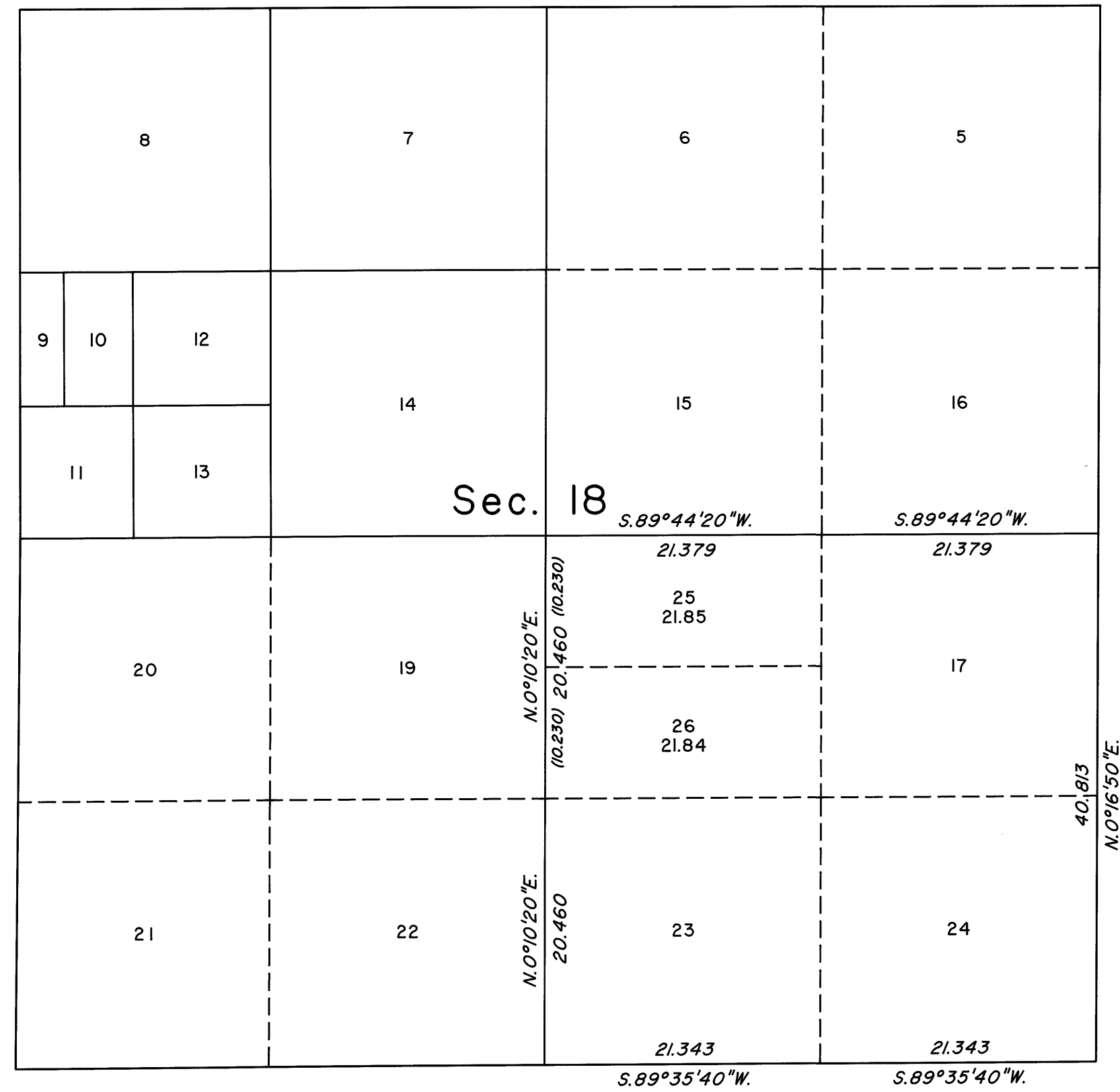


TOWNSHIP 19 SOUTH, RANGE 62 EAST, OF THE MOUNT DIABLO MERIDIAN, NEVADA  
SUPPLEMENTAL PLAT OF SECTION 18



This plat, showing the subdivision of lot 18, sec. 18, T. 19 S., R. 62 E., Mount Diablo Meridian, Nevada, is based upon the plat approved April 28, 1882, and the plat accepted May 9, 2000.

For those lines not showing bearings and distances, refer to the official record of the 1999-2000 dependent resurvey and subdivision.

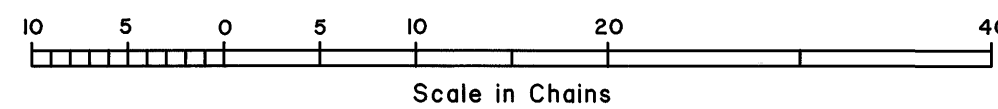
UNITED STATES DEPARTMENT OF THE INTERIOR  
BUREAU OF LAND MANAGEMENT

Reno, Nevada October 2, 2001

This plat, showing amended lottings, is based upon the official records, and having been correctly prepared in accordance with the regulations of this Bureau, is hereby accepted.

For the Director

Chief Cadastral Surveyor, Nevada



R&D

T.19S., R.62E., M.D.M.