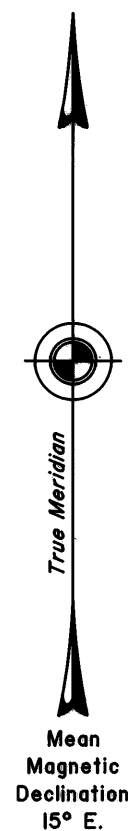
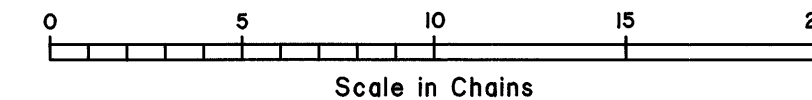
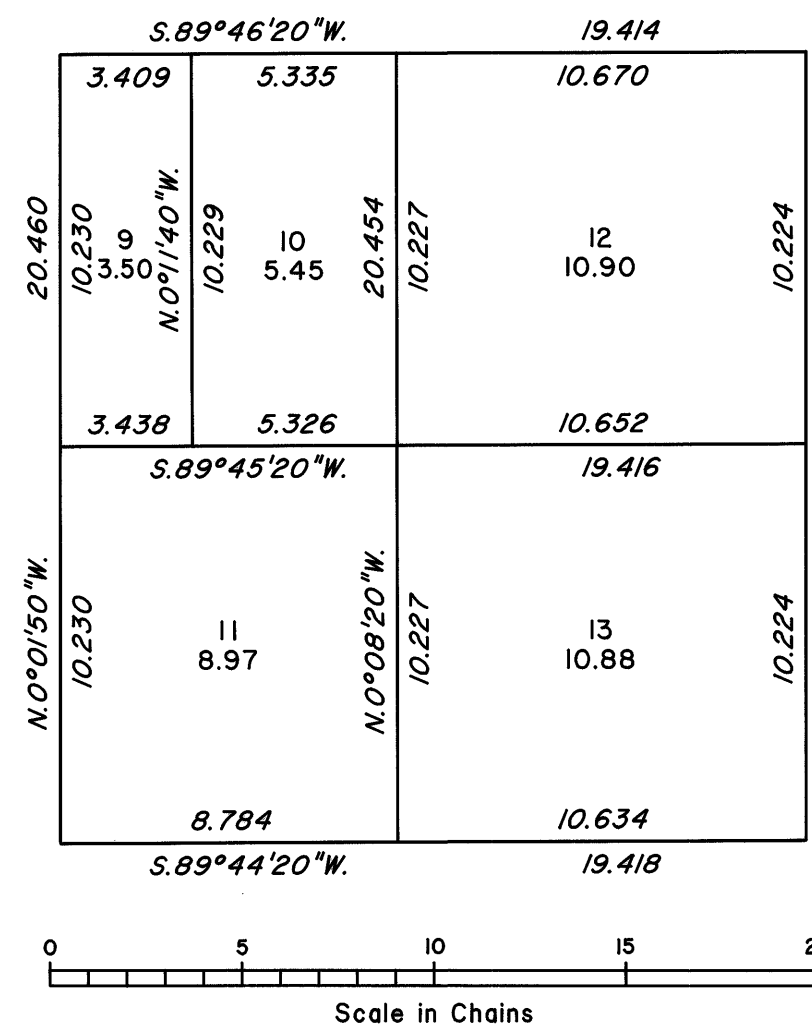
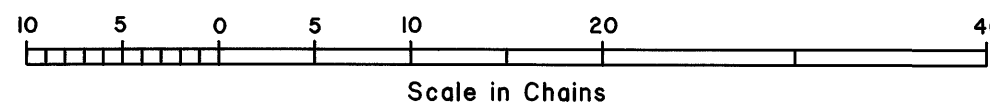


TOWNSHIP 19 SOUTH, RANGE 62 EAST, OF THE MOUNT DIABLO MERIDIAN, NEVADA  
DEPENDENT RESURVEY AND SUBDIVISION

ENLARGED DIAGRAM



Latitude 36°17'28.88\"N.  
Longitude 115°05'55.09\"W.  
NAD 83



A history of surveys is contained in the field notes.

This plat represents the dependent resurvey of a portion of the west boundary and a portion of the subdivisinal lines designed to restore the corners in their true original locations according to the best available evidence, and the subdivision of section 18, Township 19 South, Range 62 East, Mount Diablo Meridian, Nevada.

Except as shown hereon, the lottings and areas are as shown on the plat approved April 28, 1882.

Survey executed by Richard A. Zaninovich, Cadastral Surveyor, beginning March 16, 1999, and completed January 12, 2000, pursuant to Special Instructions dated March 9, 1999, for Group No. 780, Nevada.

UNITED STATES DEPARTMENT OF THE INTERIOR  
BUREAU OF LAND MANAGEMENT

Reno, Nevada May 9, 2000

This plat is strictly conformable to the approved field notes, and the survey, having been correctly executed in accordance with the requirements of law and the regulations of this Bureau, is hereby accepted.

For the Director

*David J. Clark*

Chief Cadastral Surveyor, Nevada

OFFICIALLY FILED  
NEVADA STATE OFFICE  
at 10:00 AM on May 11, 2000