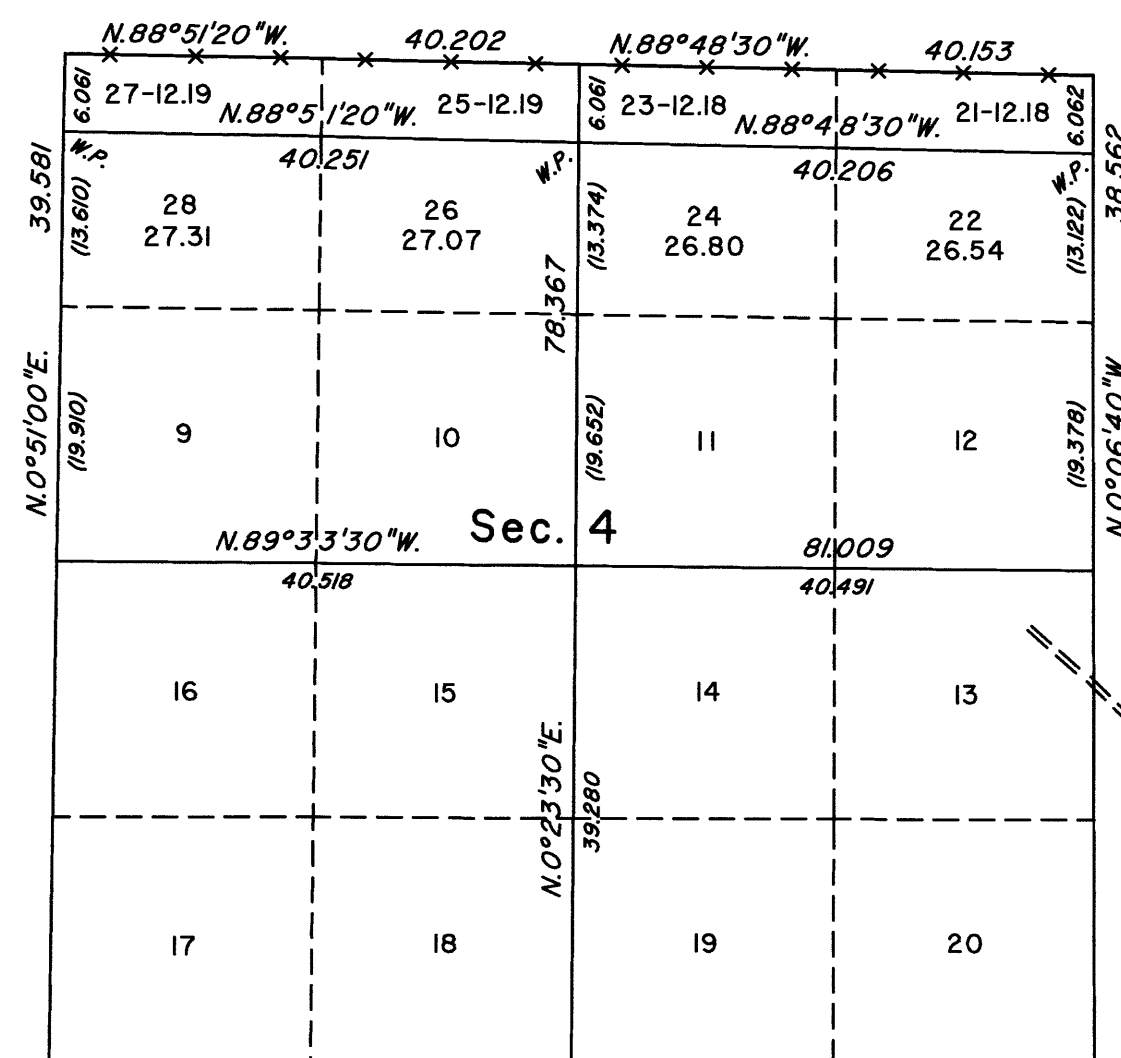
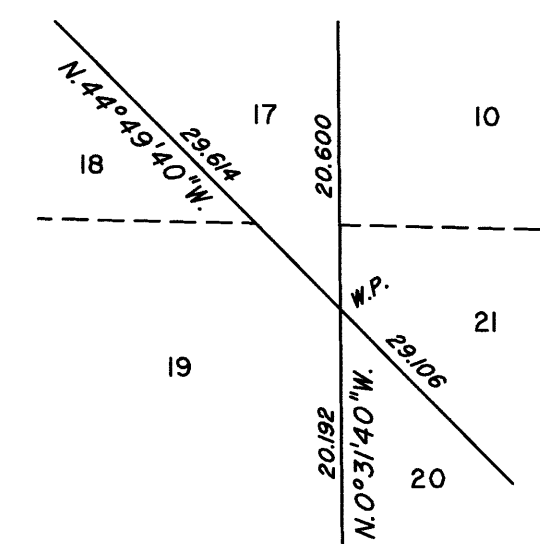


# TOWNSHIP 19 SOUTH, RANGE 61 EAST, OF THE MOUNT DIABLO MERIDIAN, NEVADA

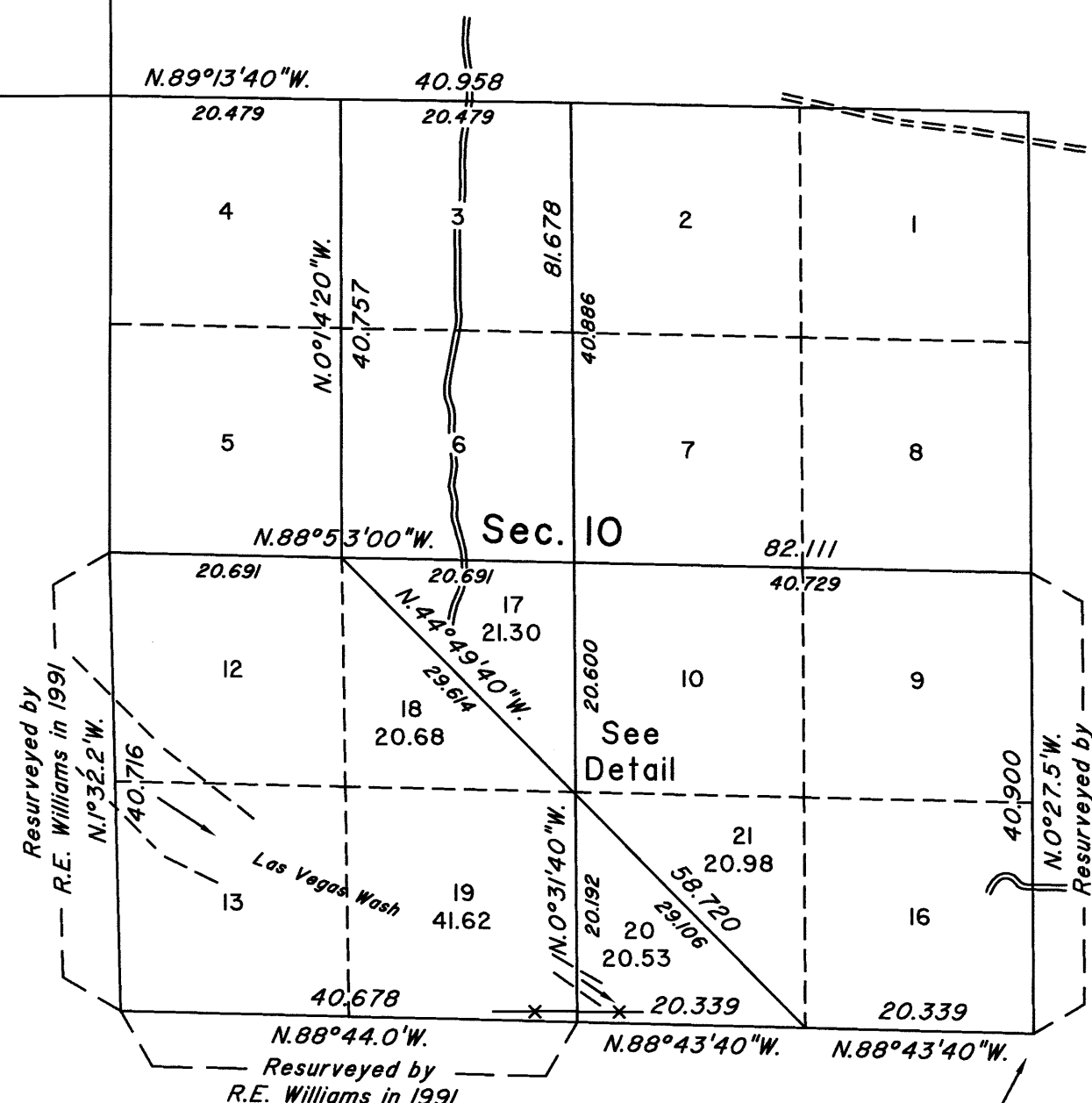
## DEPENDENT RESURVEY, SUBDIVISION AND METES-AND-BOUNDS SURVEY

DETAIL  
Not to Scale

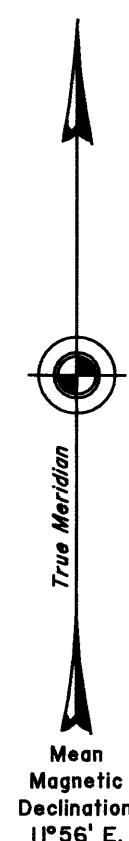
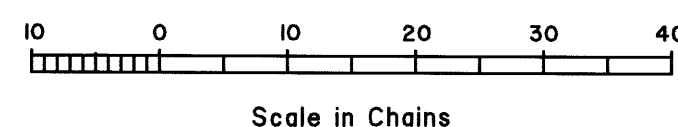


Resurveyed by  
R.E. Williams in 1991

Resurveyed by  
R.E. Williams in 1991



Latitude 36°18'20.856"N.  
Longitude 115°08'03.759"W.  
NAD 83 (2011) (EPOCH:2010.0000)



A history of surveys is contained in the field notes.

This plat, in two sheets, represents the dependent resurvey of portions of the west and north boundaries, a portion of the subdivisional lines and portions of the subdivision-of-section lines of sections 6 and 7, designed to restore the corners in their true original locations according to the best available evidence, the subdivision of sections 4, 5, 8 and 10, and metes-and-bounds surveys in sections 4, 5, 6, 7 and 10, Township 19 South, Range 61 East, Mount Diablo Meridian, Nevada.

Except as indicated hereon, the lottings and areas are as shown on the plat approved April 28, 1882, and the plats accepted May 4, 1990 and October 21, 1993, and the Supplemental plat accepted February 19, 2008.

For those lines not showing bearings and distances, refer to the official records of 1990 and 1993.

Survey executed by Craig S. Dukart, Cadastral Surveyor, beginning July 8, 2015, and completed July 21, 2015, pursuant to Special Instructions dated May 6, 2015, and Supplemental Special Instructions dated July 6, 2015, for Group No. 945, Nevada.

UNITED STATES DEPARTMENT OF THE INTERIOR  
BUREAU OF LAND MANAGEMENT

Reno, Nevada September 21, 2017

This plat is strictly conformable to the approved field notes, and the survey, having been correctly executed in accordance with the requirements of law and the regulations of this Bureau, is hereby accepted.

For the Director

*Minhmond o. Hammurby*

Chief Cadastral Surveyor for Nevada