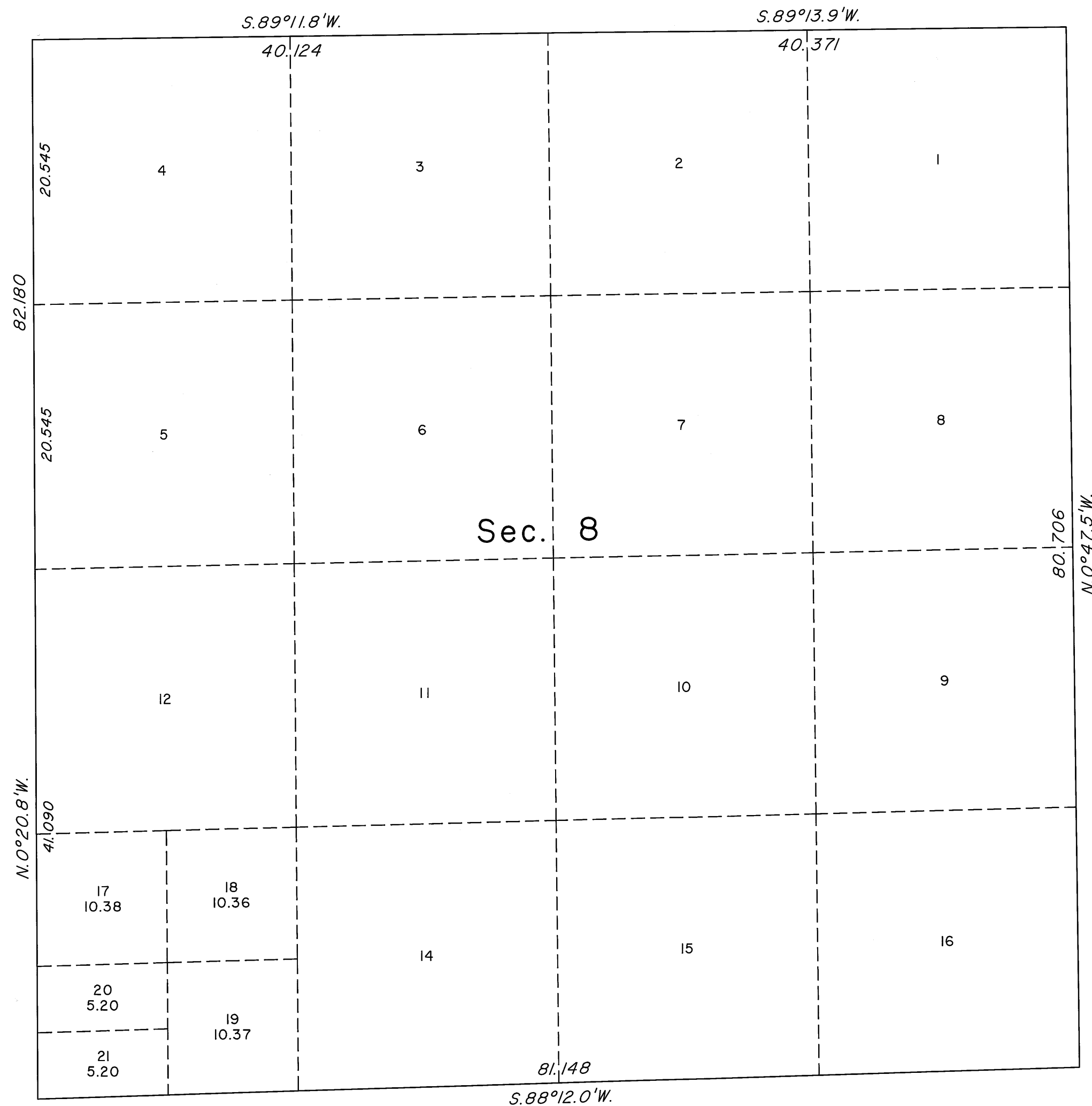
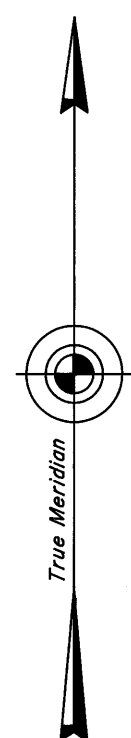


ORIGINAL

OFFICIALLY FILED
NEVADA STATE OFFICE
at 10:00 AM on February 21, 2008

TOWNSHIP 19 SOUTH, RANGE 61 EAST, OF THE MOUNT DIABLO MERIDIAN, NEVADA
SUPPLEMENTAL PLAT OF SECTION 8



This plat, showing the subdivision of former lot 13, sec. 8, Township 19 South, Range 61 East, Mount Diablo Meridian, Nevada, is based upon the plat approved April 28, 1882, and the plats accepted May 4, 1990 and October 21, 1993.

UNITED STATES DEPARTMENT OF THE INTERIOR
BUREAU OF LAND MANAGEMENT

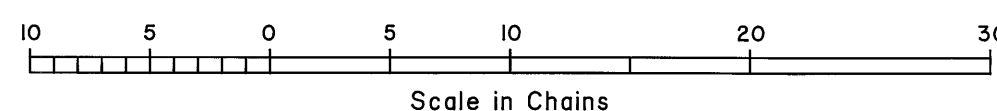
Reno, Nevada February 19, 2008

This plat, showing amended lottings, is based upon the official records, and having been correctly prepared in accordance with the regulations of this Bureau, is hereby accepted.

For the Director

David D. Morlan

Chief Cadastral Surveyor, Nevada



64

T.19S., R.61E., M.D.M.