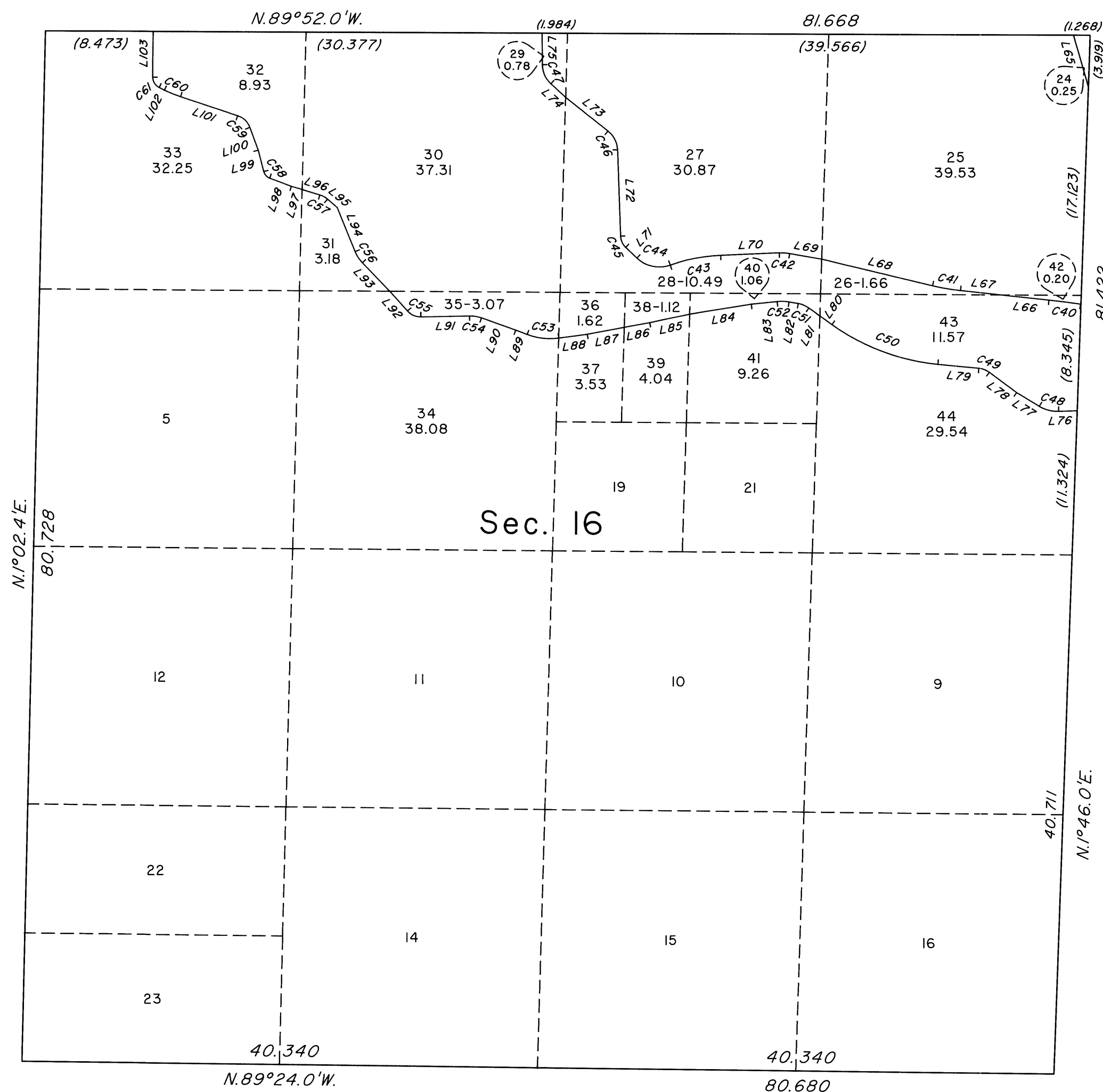


TOWNSHIP 19 SOUTH, RANGE 61 EAST, OF THE MOUNT DIABLO MERIDIAN, NEVADA
SUPPLEMENTAL PLAT OF SECTION 16



This plat, showing amended lottings in sec. 16, T.19S., R.61E., Mount Diablo Meridian, Nevada, is based upon the plat approved April 28, 1882, the plats accepted October 21, 1993, May 9, 2000, and October 2, 2001, and Amended Record of Survey, File 152, Page 0015 of Surveys, filed in the Official Records of Clark County, Nevada.

Reference should be made to Amended Record of Survey, File 152, Page 0015 of Surveys, for Line (L) and Curve (C) information representing a Conservation Preservation Area boundary. For the purpose of calculating areas, the bearings shown on the Record of Survey were rotated to the true meridian. Distances shown in parentheses are based upon calculation.

UNITED STATES DEPARTMENT OF THE INTERIOR
BUREAU OF LAND MANAGEMENT

Reno, Nevada November 14, 2005

This plat, showing amended lottings, is based upon the official records, and having been correctly prepared in accordance with the regulations of this Bureau, is hereby accepted.

For the Director

David D. Moran

Chief Cadastral Surveyor, Nevada

