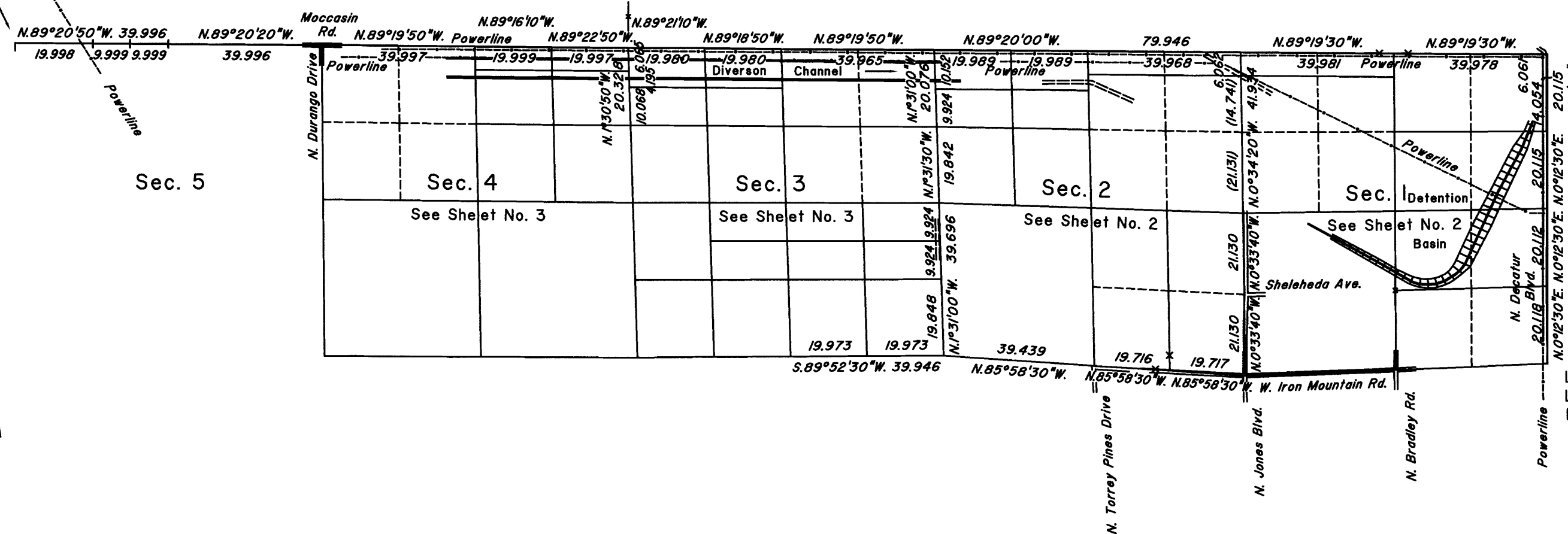


TOWNSHIP 19 SOUTH, RANGE 60 EAST, OF THE MOUNT DIABLO MERIDIAN, NEVADA

DEPENDENT RESURVEY, SUBDIVISION AND METES-AND-BOUNDS SURVEY

OFFICIALLY FILED
NEVADA STATE OFFICE
at 10:00 AM on SEP 28 2017

Latitude 36°20'10.179"N.
Longitude 115°17'47.594"W.
NAD 83 (2011) (EPOCH:2010.0000)



Latitude 36°19'14.633"N.
Longitude 115°12'25.382"W.
NAD 83 (2011) (EPOCH:2010.0000)

A history of surveys is contained in the field notes.

A dependent resurvey of a portion of the east boundary was executed concurrently under Township 19 South, Range 60 East, of this same Group.

This plat, in three sheets, represents the dependent resurvey of a portion of the north boundary, a portion of the subdivisional lines, the subdivision-of-section lines of section 1 and portions of the subdivision-of-section lines of sections 3 and 4, designed to restore the corners in their true original locations according to the best available evidence, the subdivision of section 2, the further subdivision of sections 1 and 3, and metes-and-bounds surveys in sections 1, 2 and 4, Township 19 South, Range 60 East, Mount Diablo Meridian, Nevada.

Except as indicated hereon, the lottings and areas are as shown on the plat approved April 28, 1882 and the plat accepted January 14, 1991.

For those lines not showing bearings and distances, refer to the official record of 1991.

Survey executed by Craig S. Dukart, Cadastral Surveyor, beginning June 5, 2015, and completed October 21, 2015, pursuant to Special Instructions dated May 6, 2015, for Group No. 945, Nevada.

Resurveyed by
R. A. Pratt in 1990

Surveyed by R. H. Woods and W. H. Myrick in 1882

Resurveyed by
P. K. Russell
in 1956

UNITED STATES DEPARTMENT OF THE INTERIOR
BUREAU OF LAND MANAGEMENT

Reno, Nevada September 21, 2017

This plat is strictly conformable to the approved field notes, and the survey, having been correctly executed in accordance with the requirements of law and the regulations of this Bureau, is hereby accepted.

For the Director

Chief Cadastral Surveyor for Nevada

