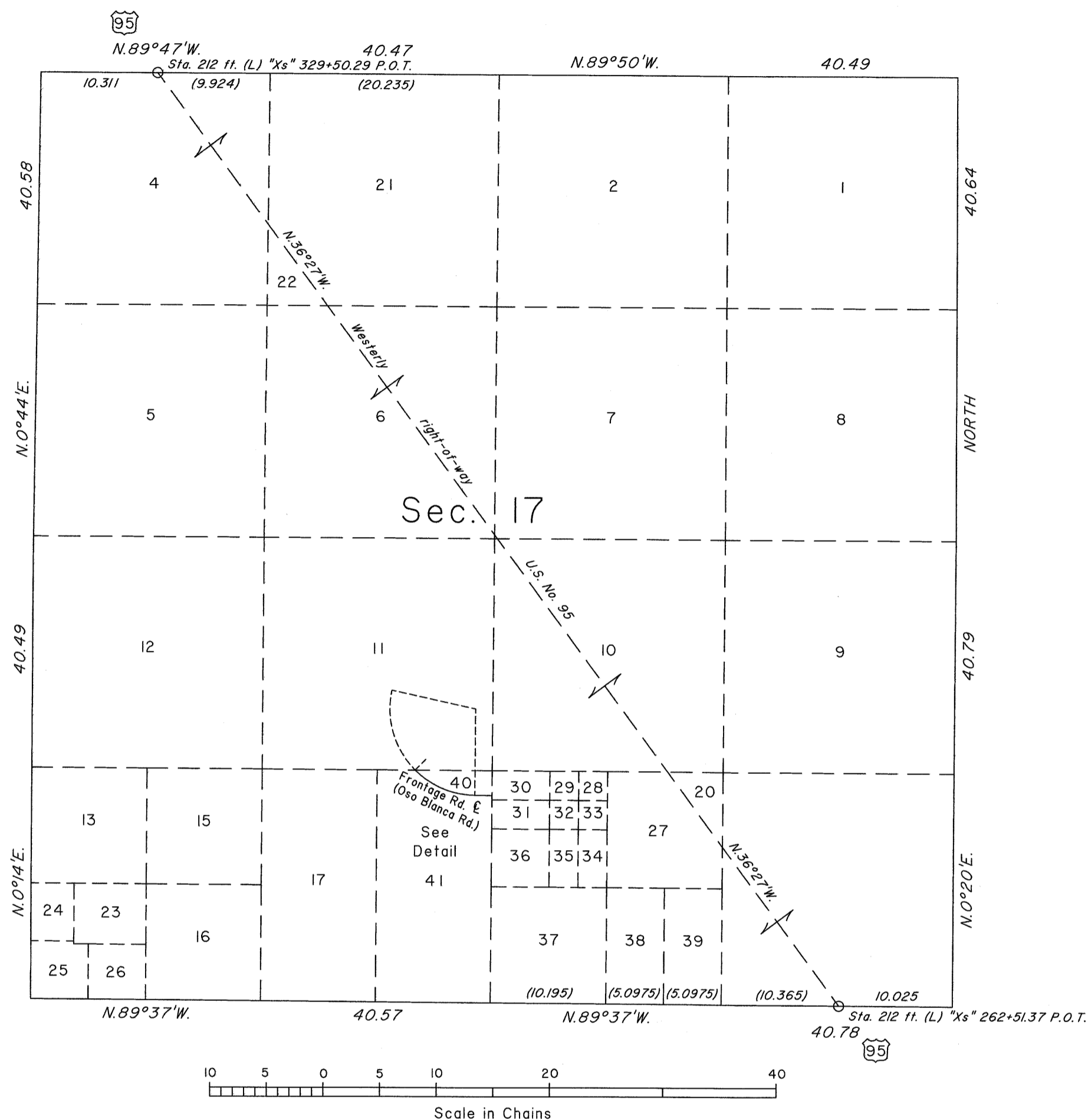
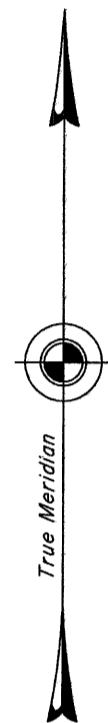
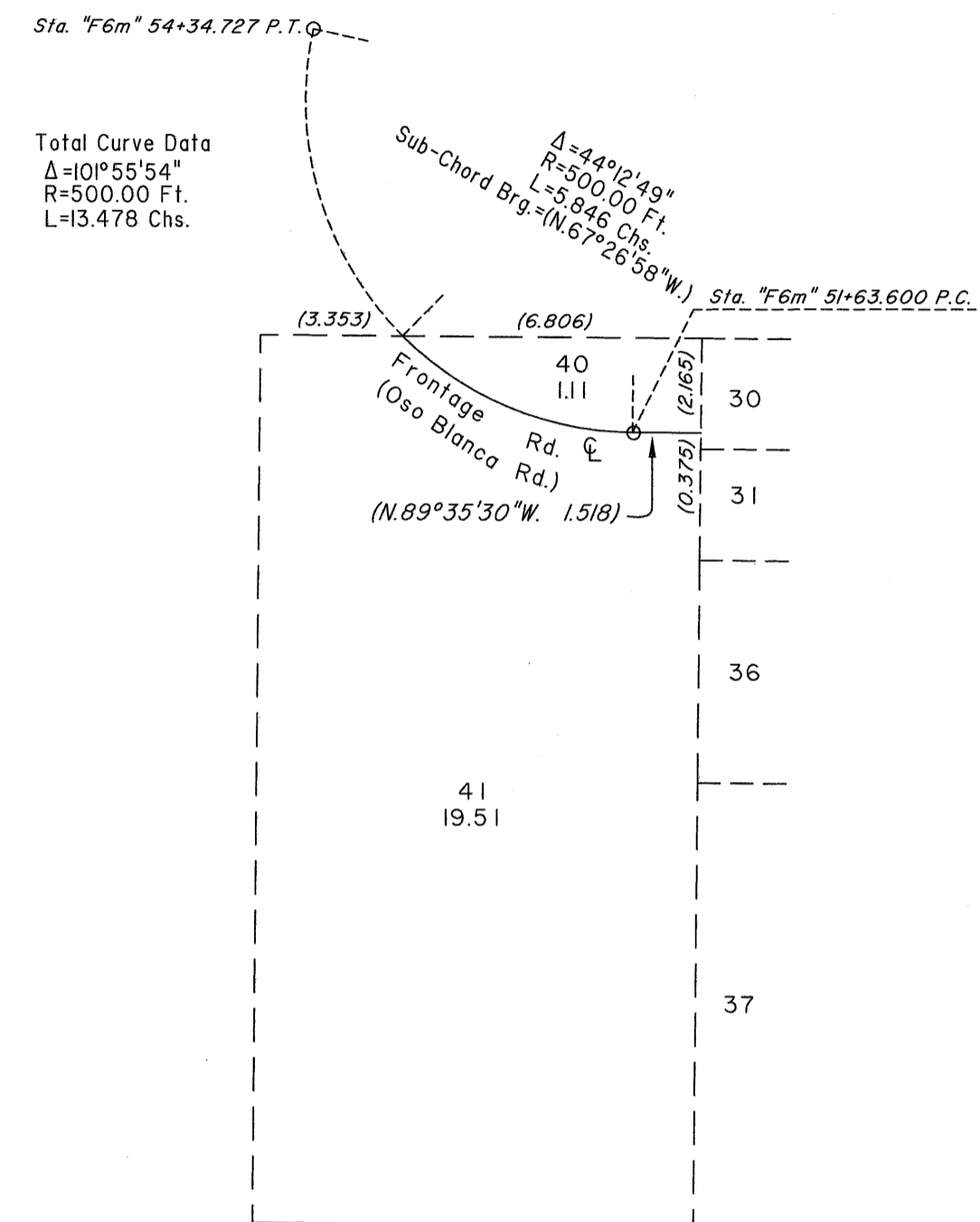


TOWNSHIP 19 SOUTH, RANGE 60 EAST, OF THE MOUNT DIABLO MERIDIAN, NEVADA  
SUPPLEMENTAL PLAT OF SECTION 17



DETAIL  
Not to Scale



This plat showing the subdivision of lot 18, sec. 17, T. 19 S., R. 60 E., Mount Diablo Meridian, Nevada, is based upon the plat approved April 28, 1882, the plat accepted February 25, 1957, the supplemental plats accepted February 20, 1991, May 15, 1991, November 3, 2009 and June 3, 2015 and Nevada Department of Transportation plats, Project No. STP-095-2(022), sheet Nos. 3 and 4 dated March 29, 2000. This plat is prepared to accommodate the transfer of lands to the State of Nevada, under the provisions of Public-Law 113-291.

Plat prepared by Clay W. Morrow, Cartographic Technician, under the direction of Brock R. Clifford, Cadastral Surveyor, beginning November 18, 2015 and completed November 20, 2015, pursuant to Special Instructions dated November 18, 2015, and Assignment Instructions dated November 18, 2015, for Group No. 960, Nevada.

Except as indicated hereon, the lottings and areas are as shown on the plat approved April 28, 1882, the plat accepted February 25, 1957, the supplemental plats accepted February 20, 1991, May 15, 1991, November 3, 2009 and June 3, 2015.

UNITED STATES DEPARTMENT OF THE INTERIOR  
BUREAU OF LAND MANAGEMENT

Reno, Nevada November 30, 2015

This plat, showing amended lottings, is based upon the official records, and having been correctly prepared in accordance with the requirements of the law and the regulations of this Bureau, is hereby accepted.

For the Director

Chief Cadastral Surveyor for Nevada