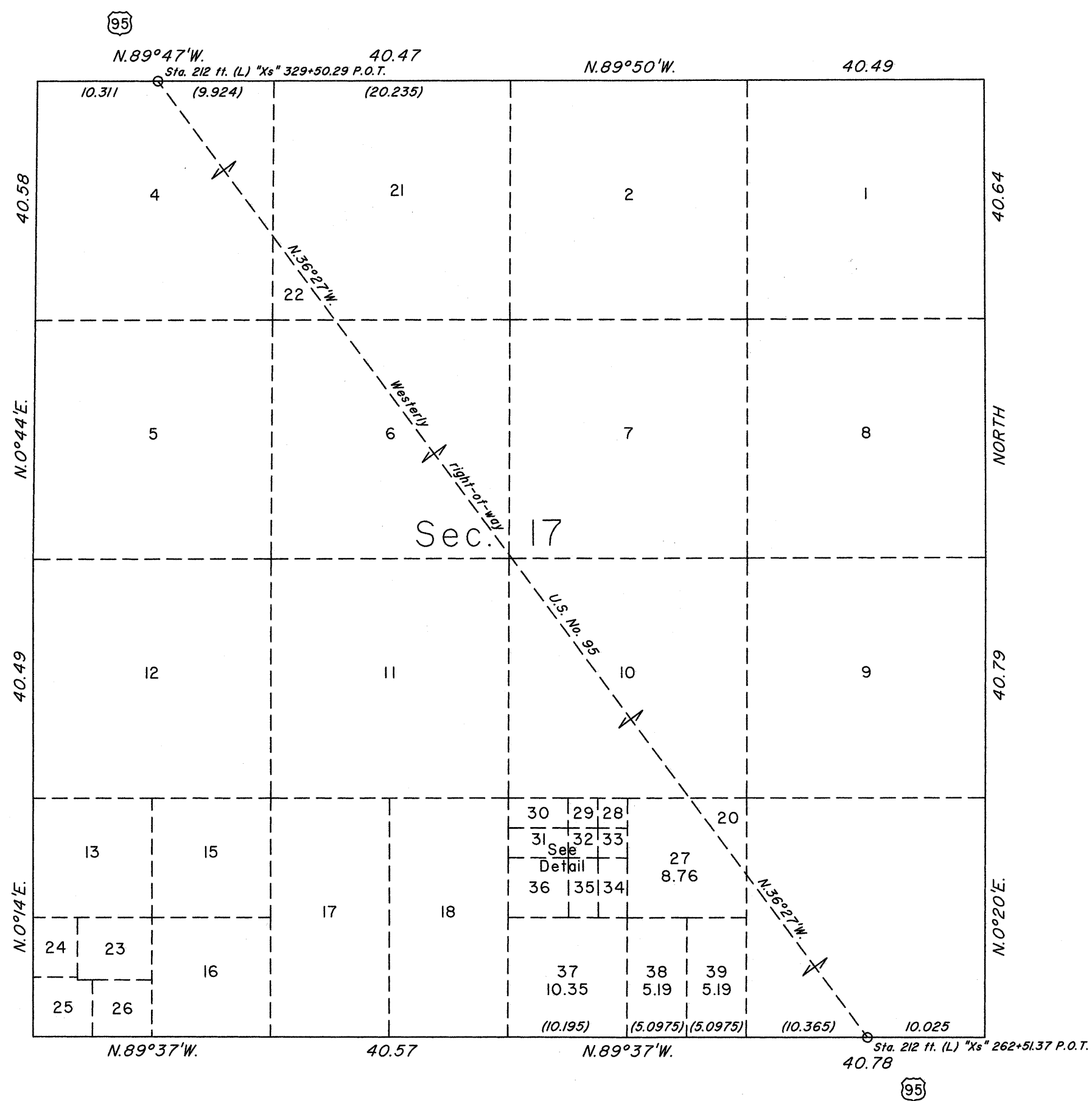


TOWNSHIP 19 SOUTH, RANGE 60 EAST, OF THE MOUNT DIABLO MERIDIAN, NEVADA
SUPPLEMENTAL PLAT OF SECTION 17



DETAIL
Not to Scale

30 1.30	29 0.65	28 0.65
31 1.30	32 0.65	33 0.64
36 2.62	35 1.30	34 1.26

This plat, showing a subdivision of lot 19, sec. 17, T. 19 S., R. 60 E., Mount Diablo Meridian, Nevada, is based upon the plat approved April 28, 1882, the plat accepted February 25, 1957, the supplemental plats accepted February 20, 1991, May 15, 1991 and November 3, 2009.

Plat prepared by Bradley F. Dillon, Cadastral Surveyor, under the direction of Clarence D. Strickland, beginning May 21, 2015, and completed June 2, 2015, pursuant to Special Instructions, dated May 20, 2015, and Amended Special Instructions, dated June 2, 2015, and Assignment Instructions dated May 20, 2015, for Group No. 947, Nevada.

Except as indicated hereon, the lottings and areas are as shown on the plat approved April 28, 1882, the plat accepted February 25, 1957, and the supplemental plats accepted February 20, 1991, May 15, 1991 and November 3, 2009.

UNITED STATES DEPARTMENT OF THE INTERIOR
BUREAU OF LAND MANAGEMENT

Reno, Nevada June 3, 2015

This plat, showing amended lottings, is based upon the official records, and having been correctly prepared in accordance with the requirements of the law and the regulations of this Bureau, is hereby accepted.

For the Director

Mahmud O. Humam

Chief Cadastral Surveyor for Nevada

