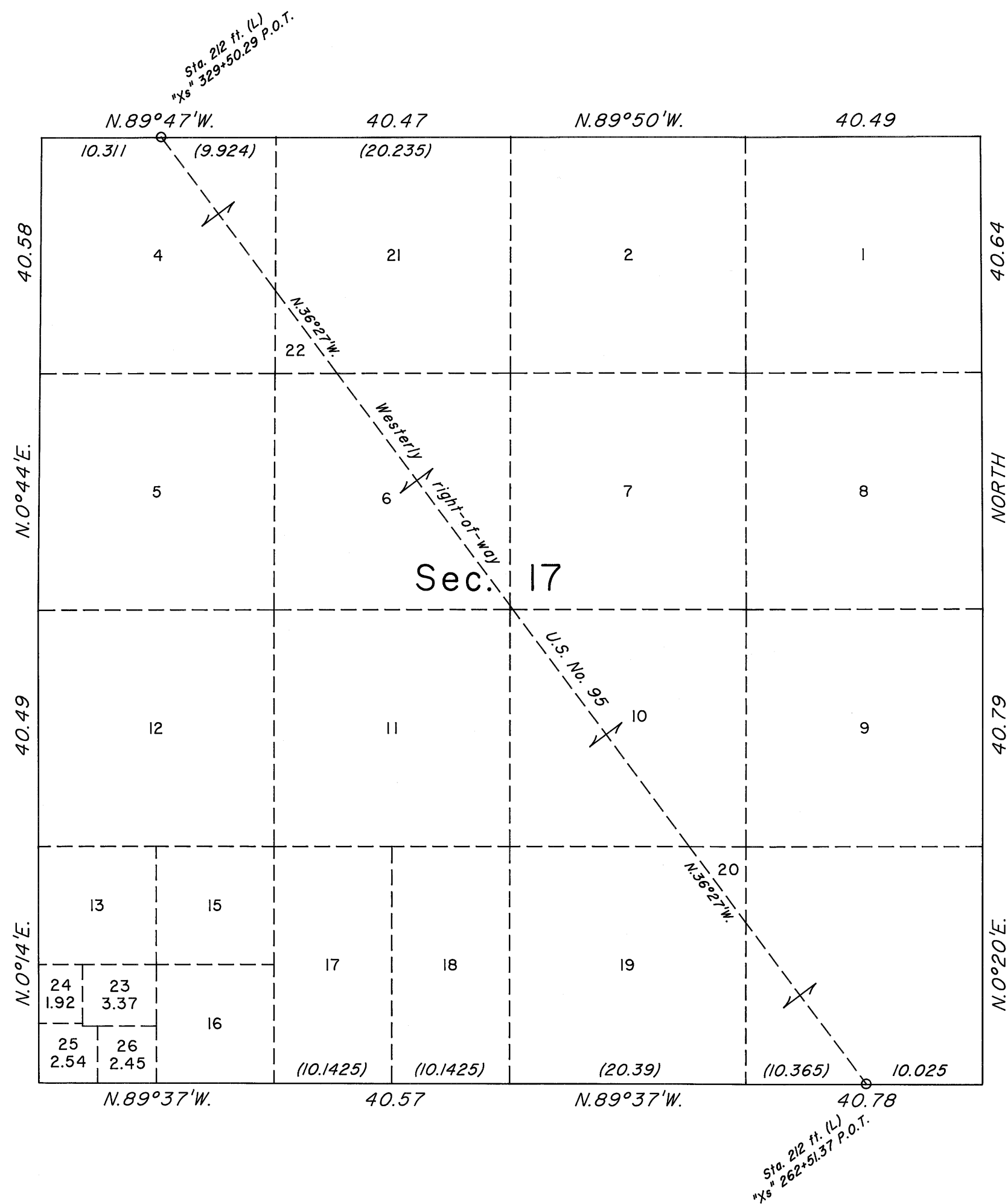


TOWNSHIP 19 SOUTH, RANGE 60 EAST, OF THE MOUNT DIABLO MERIDIAN, NEVADA
SUPPLEMENTAL PLAT OF SECTION 17



This plat, showing a subdivision of lot 14, sec. 17, T.19S., R.60E., Mount Diablo Meridian, Nevada, is based upon the plat approved April 28, 1882, the plat accepted February 25, 1957, the supplemental plats accepted February 20, 1991 and May 15, 1991, and Bureau of Land Management Right-of-Way Grants N-37055, N-37123 and N-77777. Lot 23 represents the north 350 ft. of the east 420 ft. of lot 14. Lots 24, 25 and 26 represent the continued subdivision of the rectangular system with the segregation of lot 23.

UNITED STATES DEPARTMENT OF THE INTERIOR
BUREAU OF LAND MANAGEMENT

Reno, Nevada November 3, 2009

This plat, showing amended lottings, is based upon the official records, and having been correctly prepared in accordance with the regulations of this Bureau, is hereby accepted.

For the Director

Chief Cadastral Surveyor, Nevada

