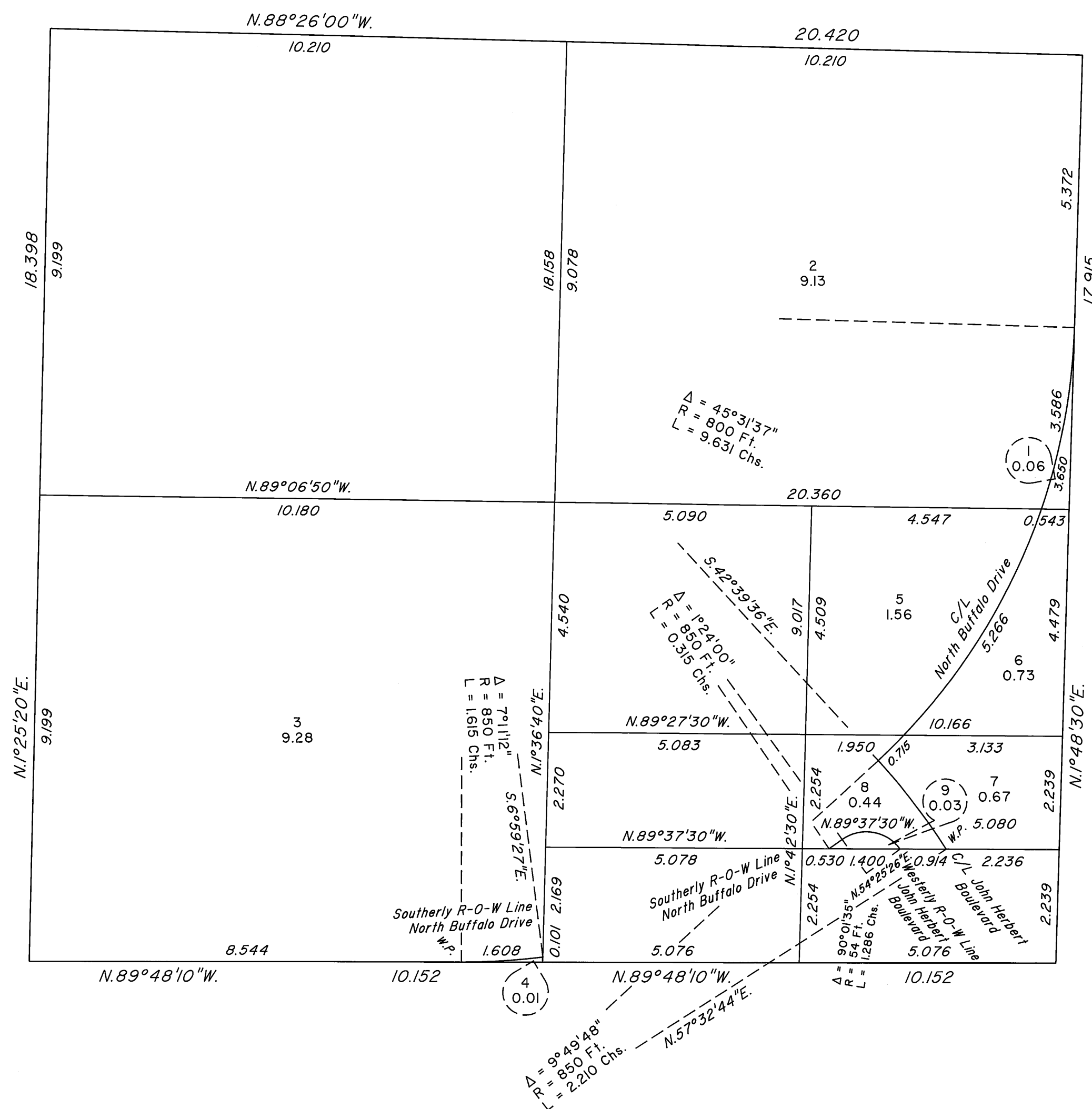
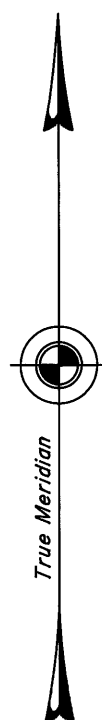


TOWNSHIP 19 SOUTH, RANGE 60 EAST, OF THE MOUNT DIABLO MERIDIAN, NEVADA
ENLARGED DIAGRAM OF THE NE 1/4 SE 1/4 OF SECTION 21

OFFICIALLY FILED
NEVADA STATE OFFICE
at 10:00 AM on April 23, 2008



Reference should be made to Sheet No. 1 for survey information.

UNITED STATES DEPARTMENT OF THE INTERIOR
BUREAU OF LAND MANAGEMENT

Reno, Nevada April 22, 2008

This plat is strictly conformable to the approved field notes, and the survey, having been correctly executed in accordance with the requirements of law and the regulations of this Bureau, is hereby accepted.

For the Director

Chief Cadastral Surveyor, Nevada

