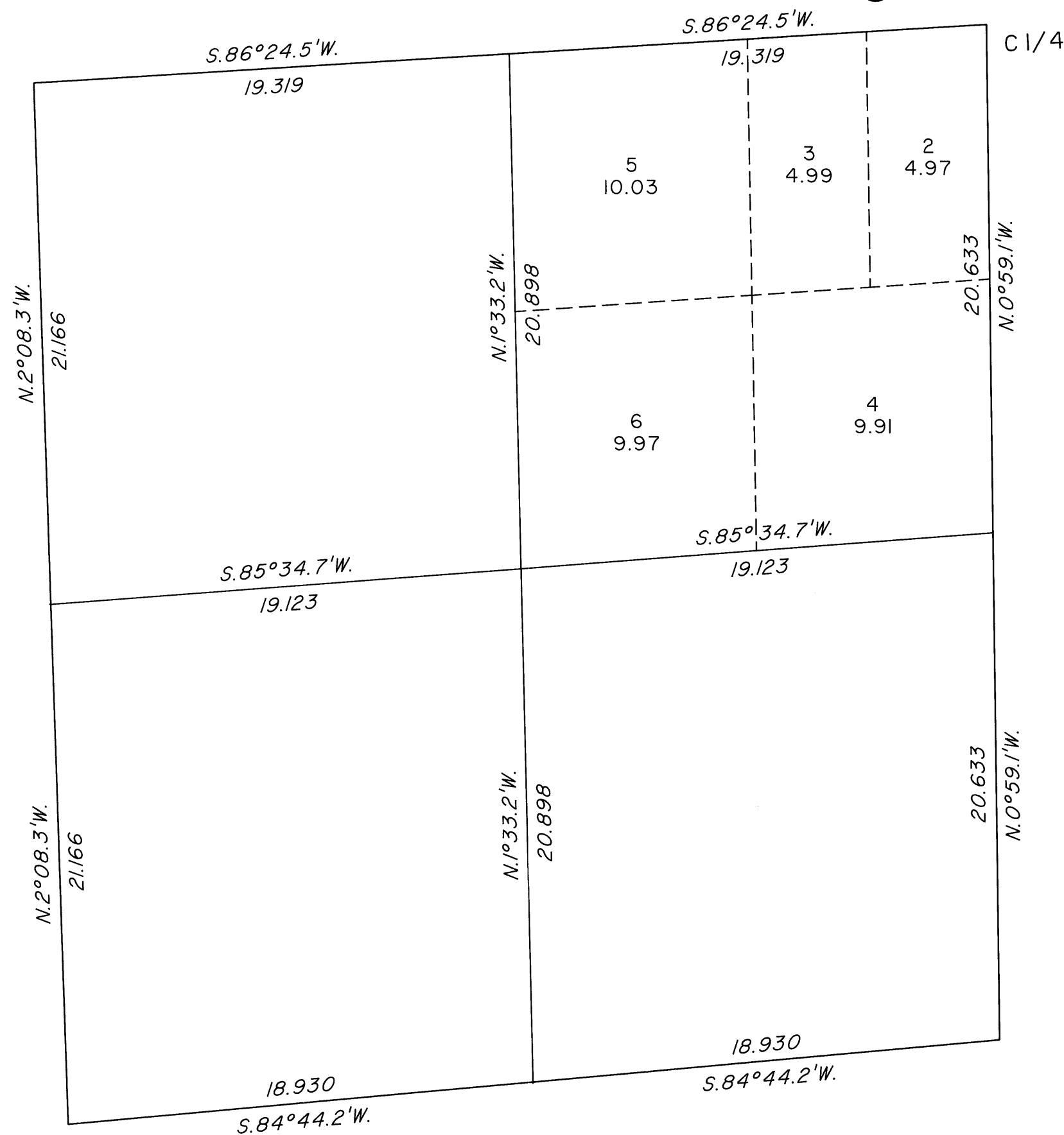
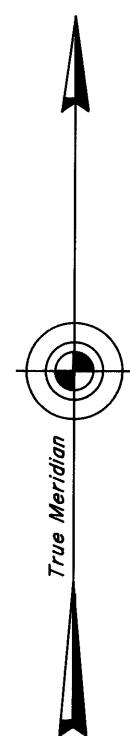


TOWNSHIP 19 SOUTH, RANGE 60 EAST, OF THE MOUNT DIABLO MERIDIAN, NEVADA
SUPPLEMENTAL PLAT OF THE SW 1/4 SECTION 12

Sec. 12



This plat, showing a subdivision of lot 1, sec. 12, T.19S., R.60E., Mount Diablo Meridian, Nevada, is based upon the plat approved April 28, 1882, and the plat accepted January 14, 1991.

UNITED STATES DEPARTMENT OF THE INTERIOR
BUREAU OF LAND MANAGEMENT

Reno, Nevada June 8, 2004

This plat, showing amended lottings, is based upon the official records, and having been correctly prepared in accordance with the regulations of this Bureau, is hereby accepted.

For the Director

Acting Chief Cadastral Surveyor, Nevada

