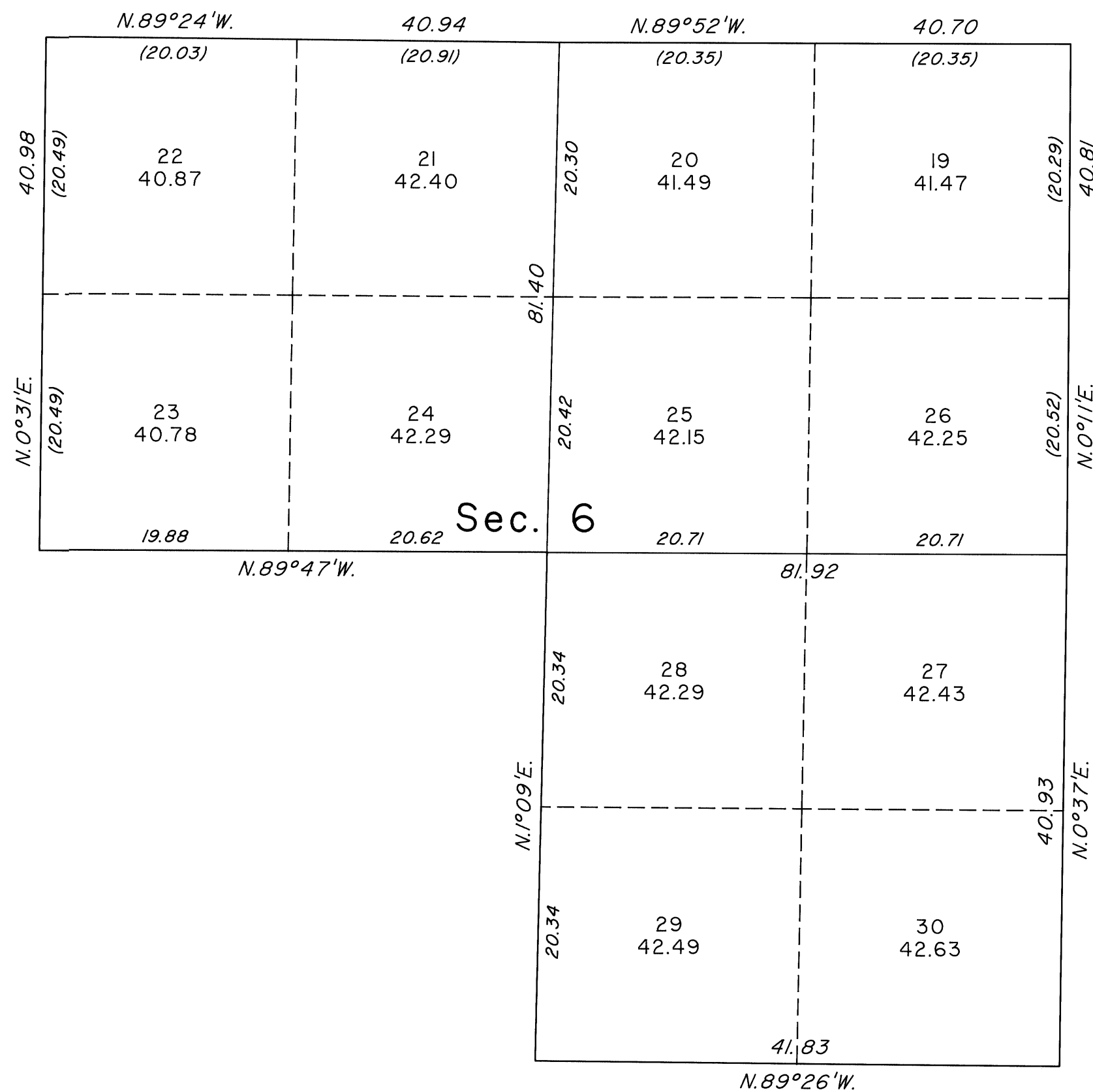
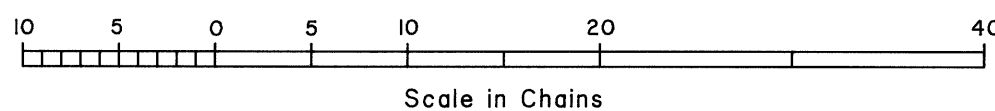
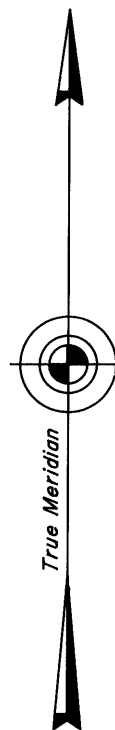


TOWNSHIP 19 SOUTH, RANGE 60 EAST, OF THE MOUNT DIABLO MERIDIAN, NEVADA
SUPPLEMENTAL PLAT OF THE N1/2 AND THE SE1/4 OF SECTION 6



This plat, showing a subdivision of the N1/2 and SE1/4 of sec. 6, T.19S., R.60E., Mount Diablo Meridian, Nevada, is based upon the plat approved April 28, 1882, and the plats accepted February 25, 1957, March 24, 1959, and February 20, 1991.



UNITED STATES DEPARTMENT OF THE INTERIOR
BUREAU OF LAND MANAGEMENT

Reno, Nevada February 24, 2004

This plat, showing amended lottings, is based upon the official records, and having been correctly prepared in accordance with the regulations of this Bureau, is hereby accepted.

For the Director

Acting Chief Cadastral Surveyor, Nevada