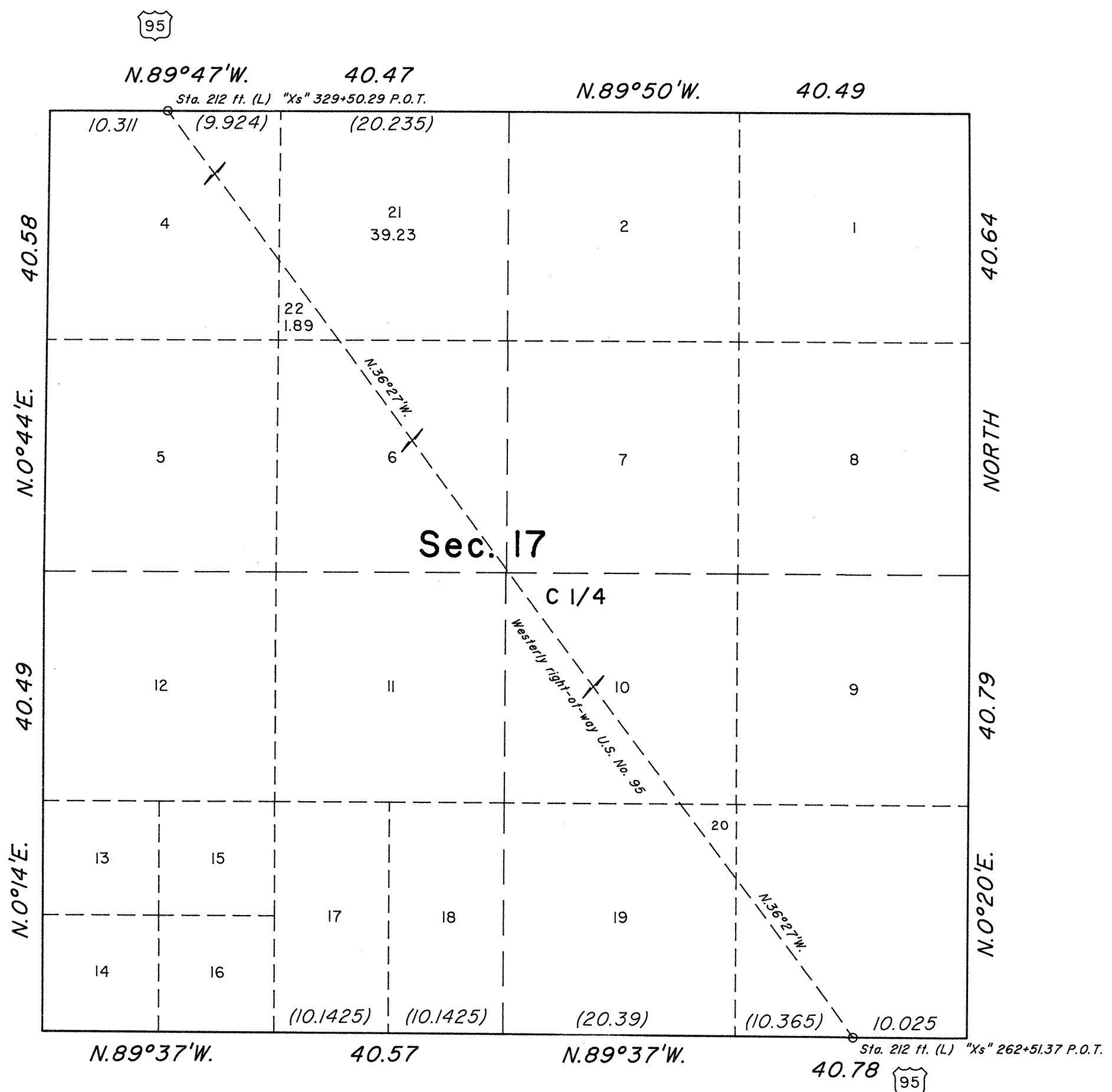


ORIGINAL

TOWNSHIP 19 SOUTH, RANGE 60 EAST, MOUNT DIABLO MERIDIAN, NEVADA

SUPPLEMENTAL PLAT OF SECTION 17



This plat, showing a subdivision of original lot 3, sec. 17, T. 19 S., R. 60 E., Mount Diablo Meridian, is based upon the plat approved April 28, 1882, and the plat accepted February 25, 1957, the Department of Transportation right-of-way maps of U.S. 95-Project No. QF-095-2(12) dated December, 1987, and the supplemental plat accepted February 20, 1991.

Lottings and areas, except as shown hereon, are as indicated on the plat approved April 28, 1882, the plat accepted February 25, 1957 and the supplemental plat accepted February 20, 1991.

UNITED STATES DEPARTMENT OF THE INTERIOR
 BUREAU OF LAND MANAGEMENT

Reno, Nevada May 15, 1991

This plat, showing amended lottings, is based upon the official records and, having been correctly prepared in accordance with the regulations of this Bureau, is hereby accepted.

For the Director

James R. Munson

Acting Chief Cadastral Surveyor

