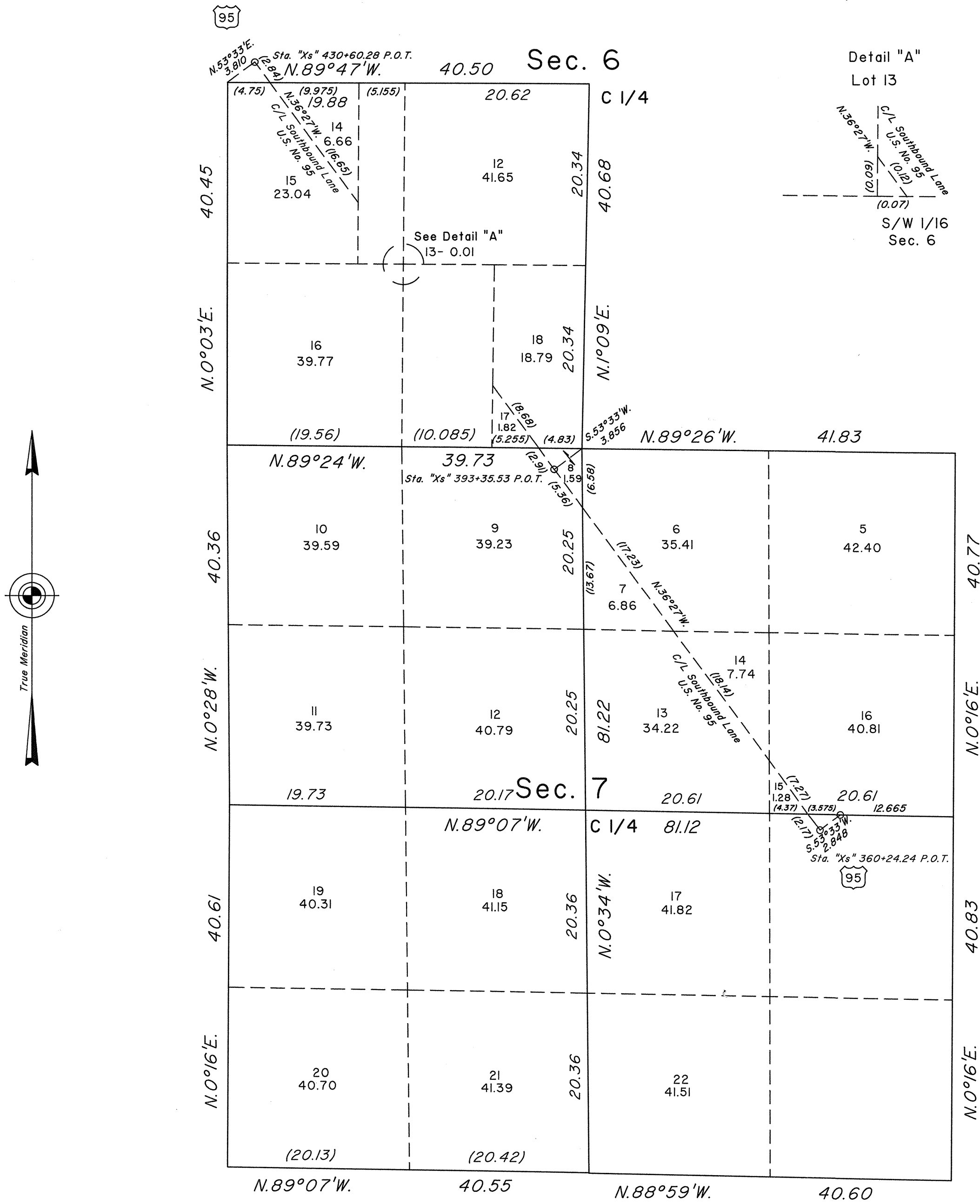


ORIGINAL

TOWNSHIP 19 SOUTH, RANGE 60 EAST, MOUNT DIABLO MERIDIAN, NEVADA

SUPPLEMENTAL PLAT OF THE SW 1/4 OF SECTION 6 AND SECTION 7



This plat, showing a subdivision of the SW 1/4 of sec. 6 and sec. 7, T. 19 S., R. 60 E., Mount Diablo Meridian, is based upon the plat approved April 28, 1882, and the plats accepted February 25, 1957, March 24, 1959 and the Department of Transportation right-of-way maps of U.S. 95 - Project No. QF-095-2(12) dated December, 1987.

UNITED STATES DEPARTMENT OF THE INTERIOR
BUREAU OF LAND MANAGEMENT

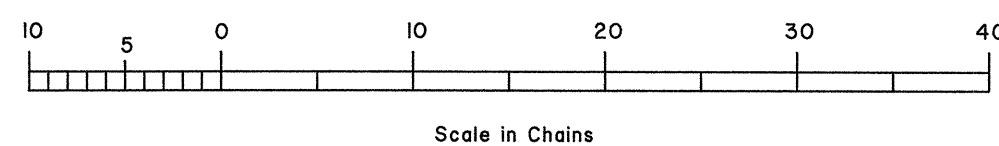
Reno, Nevada February 20, 1991

This plat, showing amended lottings, is based upon the official records and, having been correctly prepared in accordance with the regulations of this Bureau, is hereby accepted.

For the Director

John S. Parrish

Chief Cadastral Surveyor



JAB

JRM

T.19S., R.60E., M.D.M.