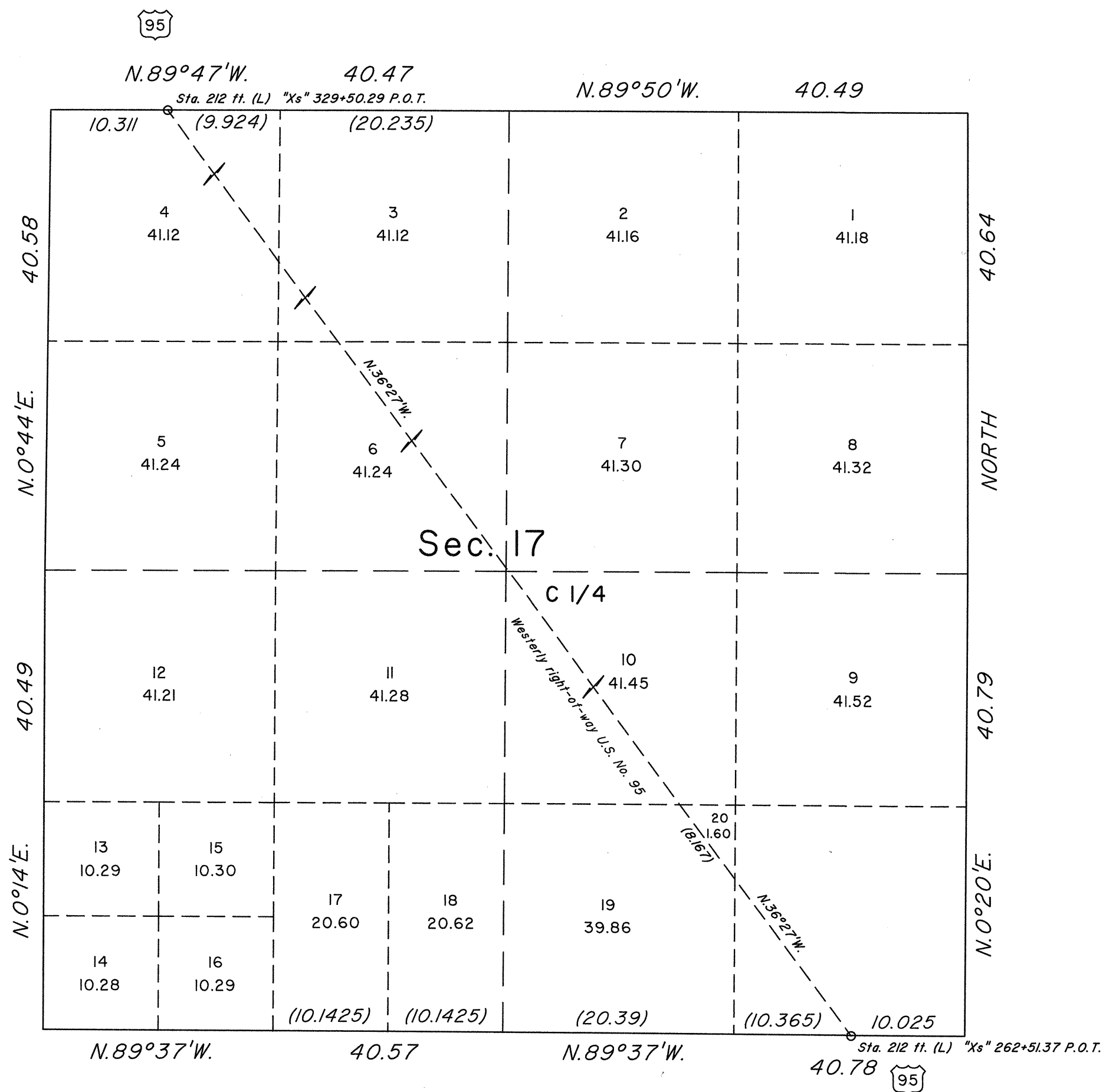


TOWNSHIP 19 SOUTH, RANGE 60 EAST, MOUNT DIABLO MERIDIAN, NEVADA  
 SUPPLEMENTAL PLAT OF SECTION 17



This plat, showing a subdivision of sec. 17, T. 19 S., R. 60 E., Mount Diablo Meridian, is based upon the plat approved April 28, 1882, and the plat accepted February 25, 1957, and the Department of Transportation right-of-way maps of U.S. 95 - Project No. QF-095-2(12) dated December, 1987.

Lots 14, 18, 19 and 20 pertain to Federal Estates only, these new lottings describe the aliquot parts where split interests occur.

UNITED STATES DEPARTMENT OF THE INTERIOR  
 BUREAU OF LAND MANAGEMENT

Reno, Nevada February 20, 1991

This plat, showing amended lottings, is based upon the official records and, having been correctly prepared in accordance with the regulations of this Bureau, is hereby accepted.

For the Director

*John S. Parrish*

Chief Cadastral Surveyor

