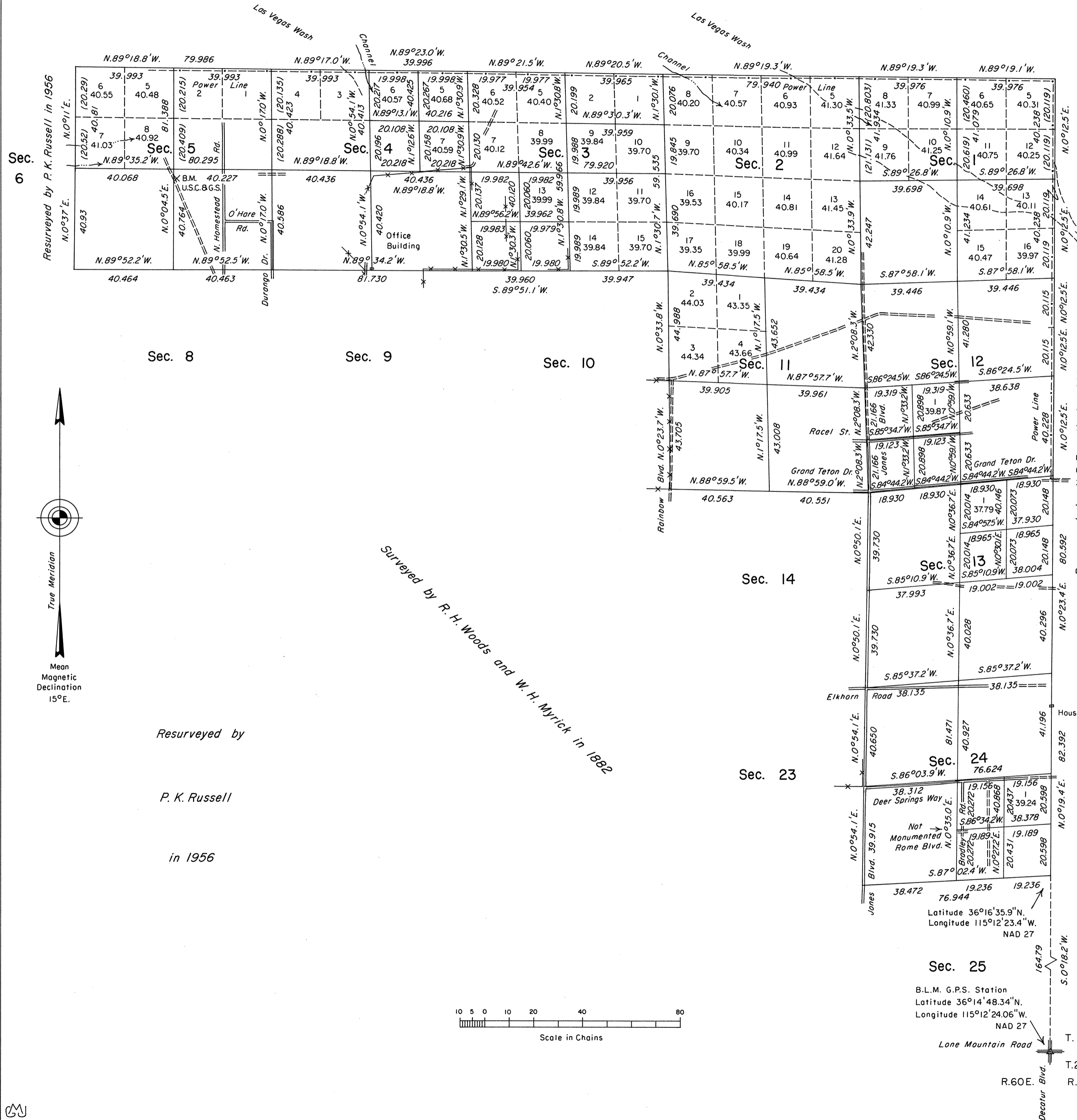


ORIGINAL

TOWNSHIP 19 SOUTH, RANGE 60 EAST, OF THE MOUNT DIABLO MERIDIAN, NEVADA
DEPENDENT RESURVEY AND SUBDIVISIONS



History of the earlier surveys is contained in the field notes.

This plat represents the dependent resurvey of a portion of the north boundary and a portion of the subdivisional lines, designed to restore the corners in their true original locations according to the best available evidence; and the survey of the subdivision of certain sections of T. 19 S., R. 60 E., Mount Diablo Meridian, Nevada.

Lottings and areas, except as shown hereon, are as indicated on the plat approved April 28, 1882. Certain areas and lots shown hereon in sections 3 and 4 pertain to Federal Estates only.

Survey executed by Robert A. Pratt, Cadastral Surveyor, beginning June 25, 1990 and completed August 6, 1990, under Special Instructions dated June 1, 1990, for Group No. 688, Nevada.

Resurveyed by
P. K. Russell
in 1956

Surveyed by **R. H. Woods and W. H. Myrick** in 1882

Resurveyed by **N. R. Forsyth** in 1990

UNITED STATES DEPARTMENT OF THE INTERIOR
BUREAU OF LAND MANAGEMENT
Reno, Nevada January 14, 1991

This plat is strictly conformable to the approved field notes, and the survey, having been correctly executed in accordance with the requirements of law and the regulations of this Bureau, is hereby accepted.

For the Director
John S. Parrish
Chief Cadastral Surveyor

Sec. 25
B.L.M. G.P.S. Station
Latitude 36°16'35.9"N.
Longitude 115°12'23.4"W.
NAD 27

T.19S.
T.20S.
R.60E. R.61E.

T.19S., R.60E., M.D.M.