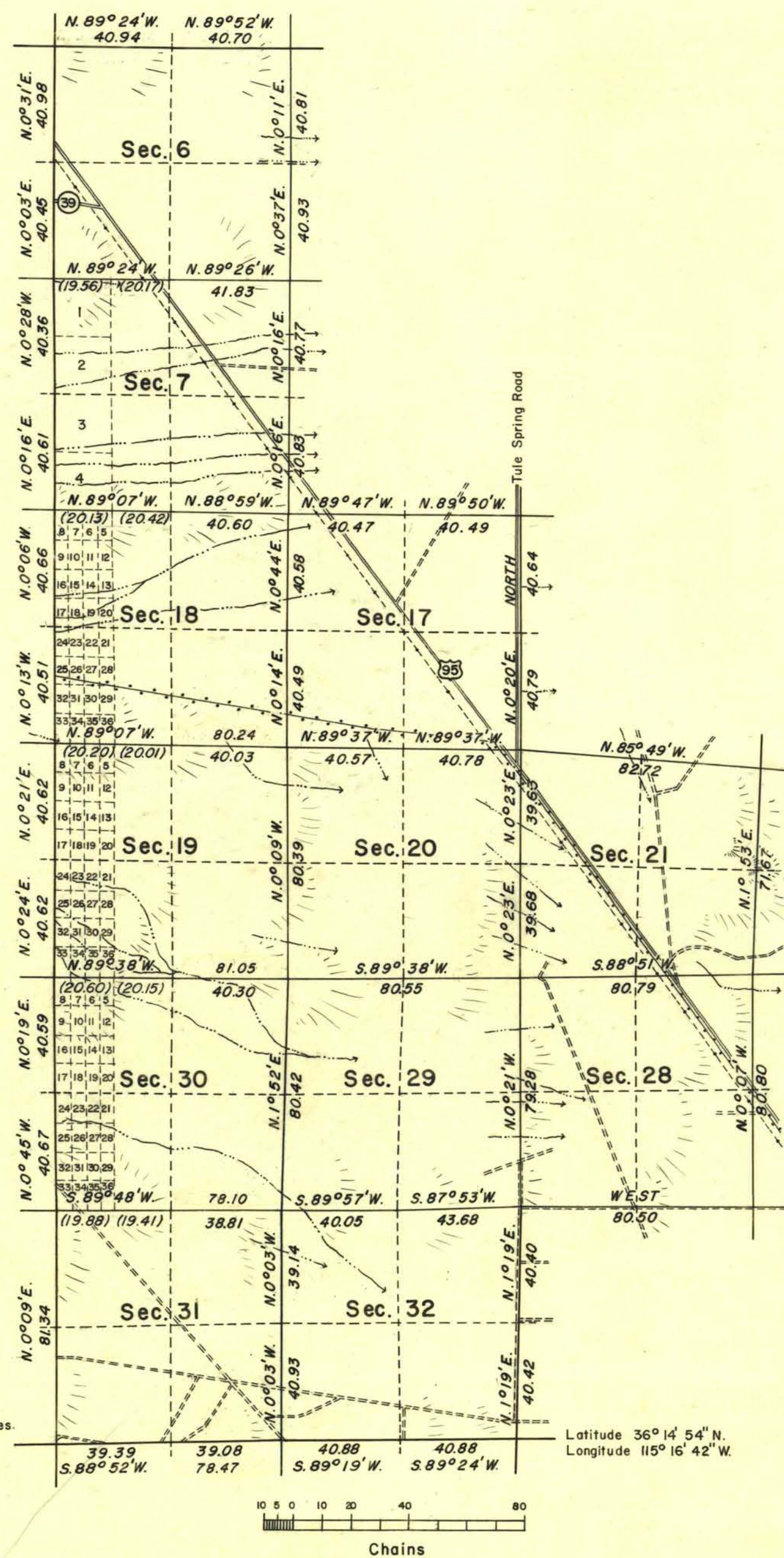


TOWNSHIP 19 SOUTH, RANGE 60 EAST, MOUNT DIABLO MERIDIAN, NEVADA

DEPENDENT RESURVEY



Mean magnetic declination
15° 45' E.

History of earlier surveys is contained
in the field notes.

This plat represents a dependent resurvey
of the west boundary, a portion of the north
and south boundaries, and a portion of the sub-
divisional lines of T. 19 S., R. 60 E.,
Mount Diablo Meridian, Nevada, designed to
restore the corners in their original locations
according to the best available evidence.
Except as shown on sheet 2, lottings and areas
are as shown on plat of survey approved
April 28, 1882 and supplemental plats accepted
June 13, 1955 and June 29, 1955.

Survey executed by Paul K. Russell April 12
to 20, 1956 under special instructions dated
October 14, 1955 for Group 357, Nevada.

UNITED STATES DEPARTMENT OF THE INTERIOR
BUREAU OF LAND MANAGEMENT
Washington, D. C. February 25, 1957

This plat is strictly conformable to the approved field notes, and the
survey, having been correctly executed in accordance with the requirements
of law and the regulations of this Bureau, is hereby accepted.

For the Director

Carl S. Harrington

Cadastral Engineering Staff Officer