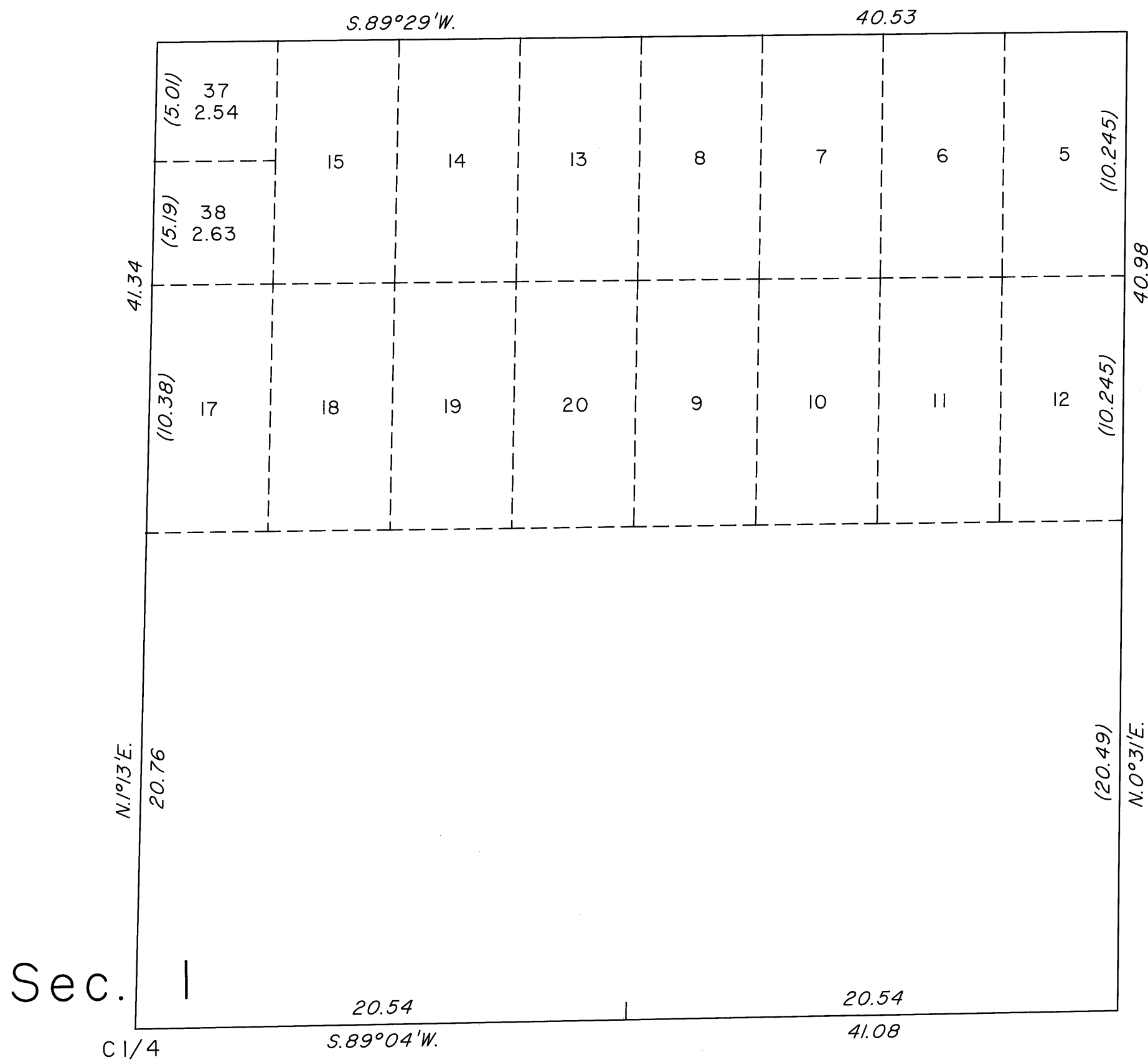


TOWNSHIP 19 SOUTH, RANGE 59 EAST, OF THE MOUNT DIABLO MERIDIAN, NEVADA  
SUPPLEMENTAL PLAT OF THE NE 1/4 SECTION 1



This plat, showing a subdivision of lot 16, sec. 1, T.19S., R.59E., Mount Diablo Meridian, Nevada, is based upon the plat approved November 23, 1881, and the plats accepted June 13, 1955, February 26, 1957, and May 6, 1959.

UNITED STATES DEPARTMENT OF THE INTERIOR  
BUREAU OF LAND MANAGEMENT

Reno, Nevada August 12, 2004

This plat, showing amended lottings, is based upon the official records, and having been correctly prepared in accordance with the regulations of this Bureau, is hereby accepted.

For the Director

Acting Chief Cadastral Surveyor, Nevada

