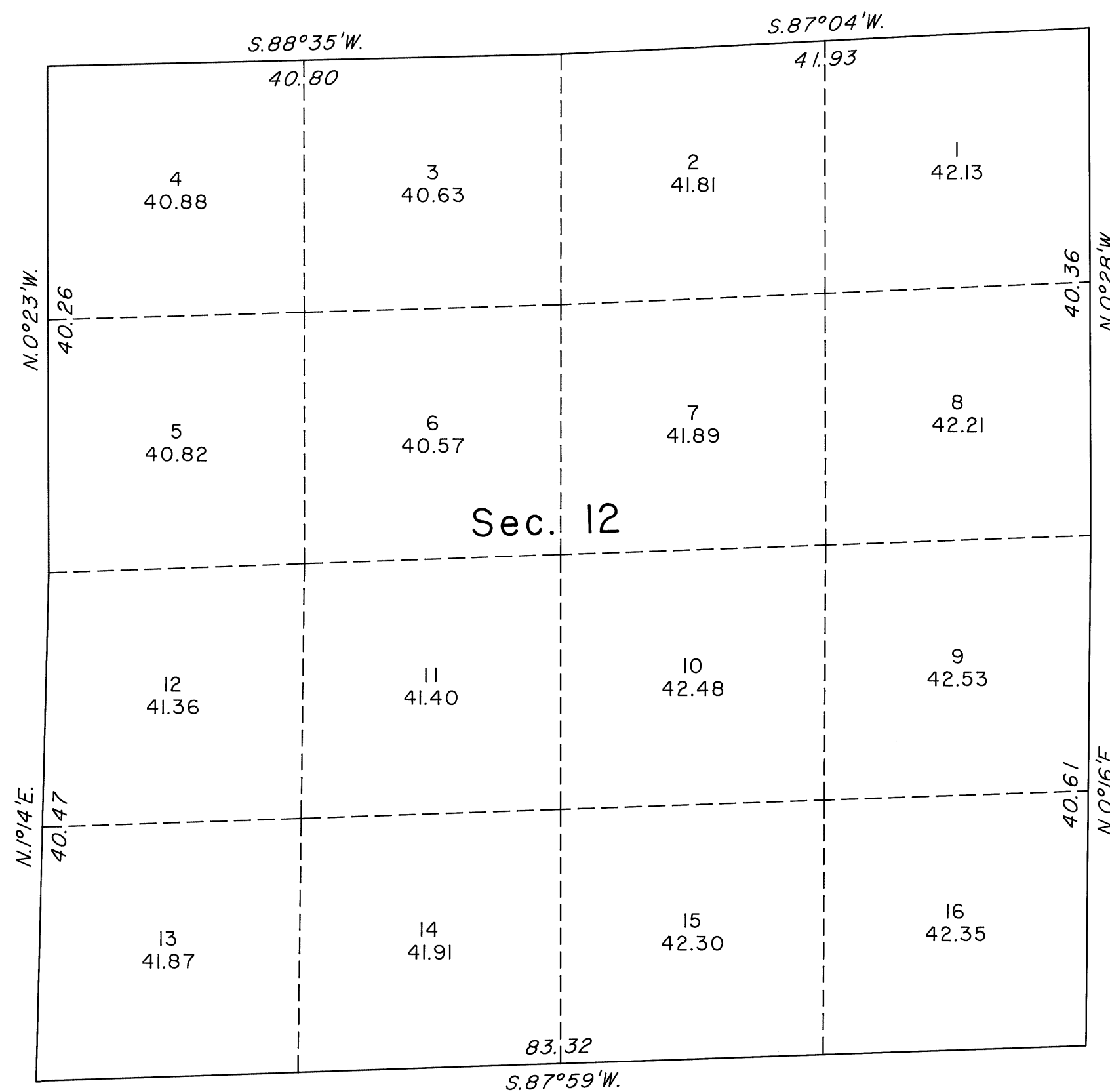
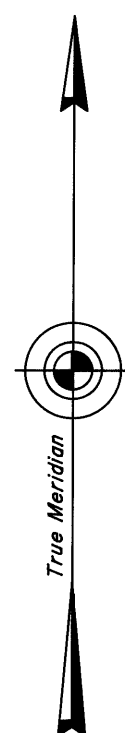


TOWNSHIP 19 SOUTH, RANGE 59 EAST, OF THE MOUNT DIABLO MERIDIAN, NEVADA
SUPPLEMENTAL PLAT OF SECTION 12



This plat, showing a subdivision of sec. 12, T.19S., R.59E., Mount Diablo Meridian, Nevada, is based upon the plat approved November 23, 1881, and the plat accepted February 25, 1957.

UNITED STATES DEPARTMENT OF THE INTERIOR
BUREAU OF LAND MANAGEMENT

Reno, Nevada February 24, 2004

This plat, showing amended lottings, is based upon the official records, and having been correctly prepared in accordance with the regulations of this Bureau, is hereby accepted.

For the Director

David J. Clark

Acting Chief Cadastral Surveyor, Nevada

