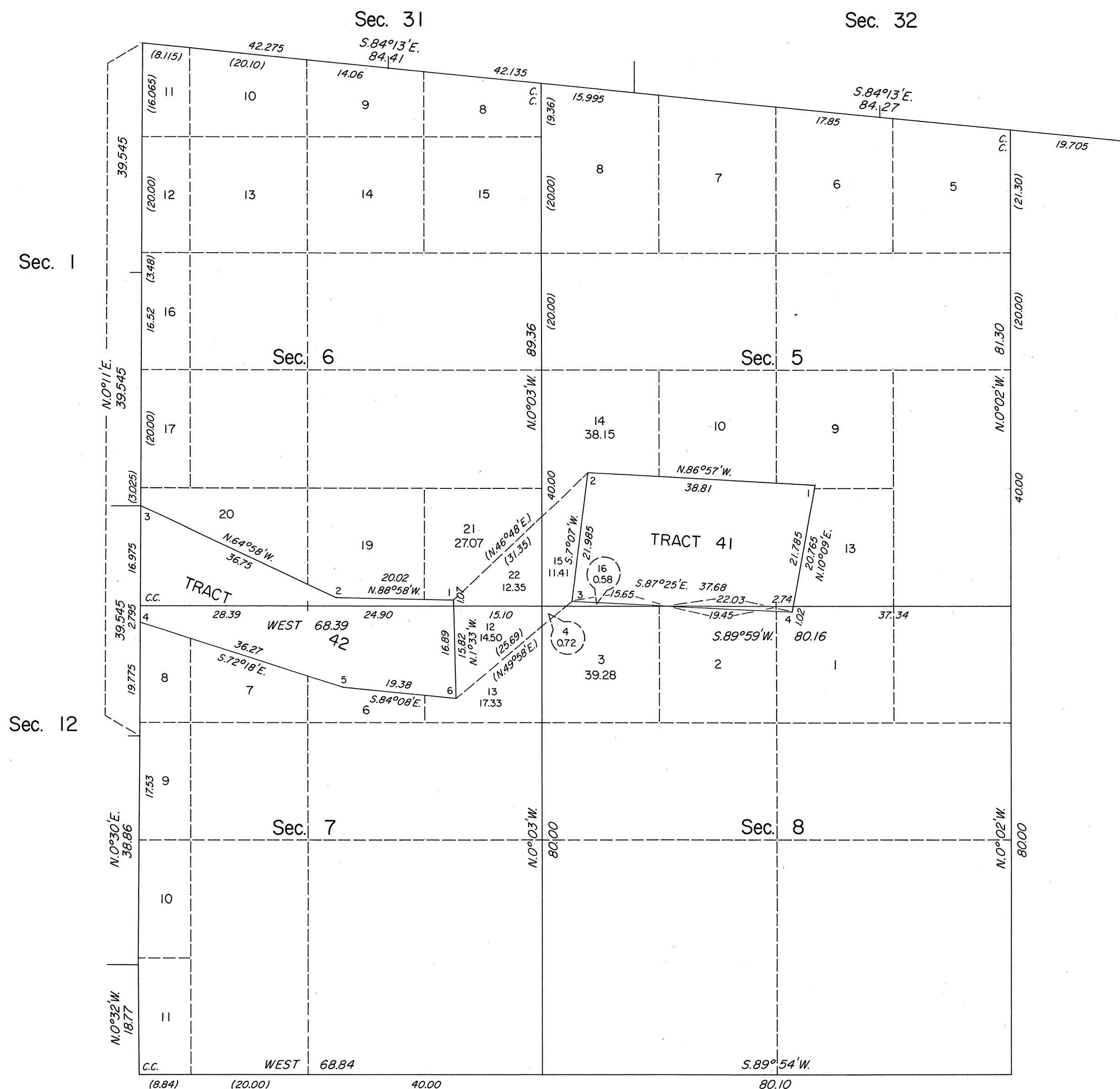


ORIGINAL

OFFICIALLY FILED
NEVADA STATE OFFICE
10:00 AM OCT 30, 1981

TOWNSHIP 19 SOUTH, RANGE 56 EAST, OF THE MOUNT DIABLO MERIDIAN, NEVADA
SUPPLEMENTAL PLAT OF SECS. 5, 6, 7 AND 8



This plat showing a subdivision of original lots 11 and 12, section 5; lot 18, section 6; lot 5, section 7; and the NW1/4 NW1/4, section 8, T. 19 S., R. 56 E., Mount Diablo Meridian, Nevada, is based upon the plat accepted January 25, 1939.

UNITED STATES DEPARTMENT OF THE INTERIOR
BUREAU OF LAND MANAGEMENT
Denver, Colorado October 16, 1981

This plat, showing amended lottings, is based upon the official records and, having been correctly prepared in accordance with the regulations of this Bureau, is hereby accepted.

For the Director

Gay S. Speight

Acting Chief, Cadastral Survey
Examination and Approval Staff

