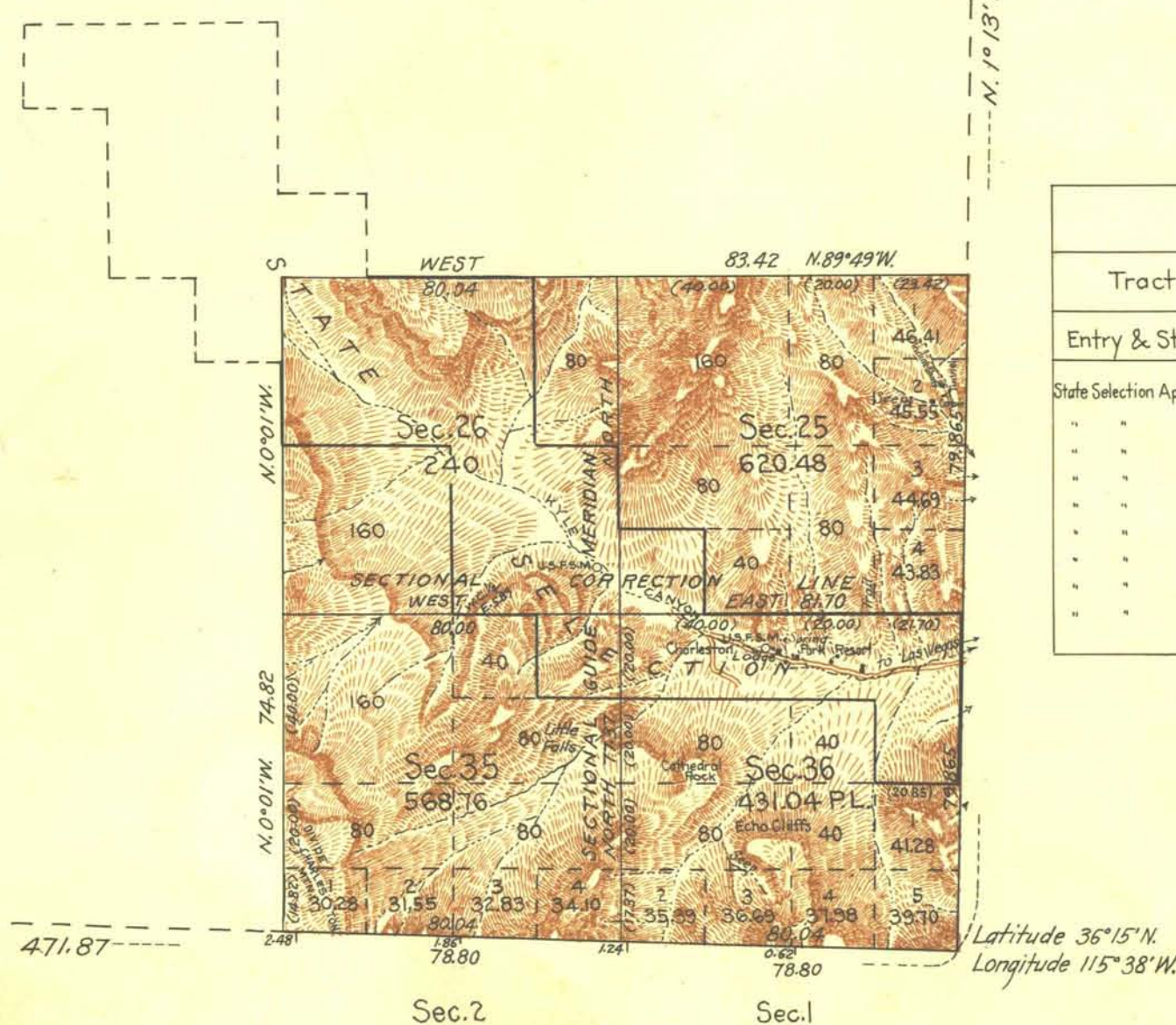


INDEPENDENT RESURVEY TOWNSHIP N°19 SOUTH, RANGE N°56 EAST OF THE MOUNT DIABLO MERIDIAN, NEVADA.

NOTE:

This plat of the resurvey of T. 19 S., R. 56 E., M. D. M. delineates a retracement and reestablishment (dependent resurvey) of the south two miles of the east boundary and east two miles of the south boundary of the original survey as shown on plat approved Oct. 14, 1881, in their true original position according to the best available evidence of the position of the original corners; also, an independent resurvey of Secs. 25, 26, 35, and 36 superseding the survey executed by Theo. Bing, U.S. Deputy Surveyor in 1881 and was executed under Supplemental Special Instructions for Resurvey, Group 147, Nevada, dated September 30, 1929.

The State Selection shown to conform to the lines of the resurvey, by the original legal subdivisions, represents the position and form of said tract under the original description as referred to the original survey, located as such on the ground according to the best available evidence of its true position.



Index to Appropriated Subdivisions								
Tract	Original Survey				Resurvey			
Entry & Status	Tp.	Rq.	Sec.	Subdvn.	Tp.	Rq.	Sec.	Subdvn.
State Selection Approved	19 S	56 E	25	SW 4 SW 4	19 S	56 E	25	SW 4 SW 4
" " "	"	"	26	NW 4	"	"	26	NW 4
" " "	"	"	"	W 2 NE 4	"	"	"	W 2 NE 4
" " "	"	"	"	SE 4	"	"	"	SE 4
" " "	"	"	35	NE 4 NE 4	"	"	35	NE 4 NE 4
" " "	"	"	36	N 2 NW 4	"	"	36	N 2 NW 4
" " "	"	"	"	NW 4 NE 4	"	"	"	NW 4 NE 4
" " "	"	"	"	NE 4 NE 4	"	"	"	NE 4 NE 4
" " "	"	"	"	SE 4 NE 4	"	"	"	SE 4 NE 4

Mean Magnetic Declination, 16° 30' E.

Scale: 40 Chains to an Inch.

Area Surveyed 1860.28 Acres.

LINES DESIGNATED	BY WHOM SURVEYED	GROUP		MILEAGE MLS. CHS.	WHEN SURVEYED	
		Nº	DATE		BEGUN	COMPLETED
Exterior	Andrew Nelson & Carl S. Swanholm	147	Sept. 30, 1929	3 79.81	Nov. 1, 1929	Nov. 23, 1929
Subdivisional	" " " "	"	" " "	7 77.35	Nov. 13, 1929	Nov. 29, 1929

Office of U.S. Supervisor of Surveys
Denver, Colorado, Jan. 27, 1930.

The above plat of Township N°19 South, Range N°56 East of the Mount Diablo Meridian, Nevada, is strictly conformable to the field notes of the survey thereof which have been examined and approved.

Stanley E. Olson
U.S. Supervisor of Surveys.

DEPARTMENT OF THE INTERIOR
GENERAL LAND OFFICE

Washington, D.C., February 1, 1930.

The survey represented by this plat having been correctly executed in accordance with the requirements of law and the regulations of this office, is hereby accepted.

Thos. C. Starnell
Assistant Commissioner.

H.W.M. Comput. Plat
F.B.J. Lett. Topog.