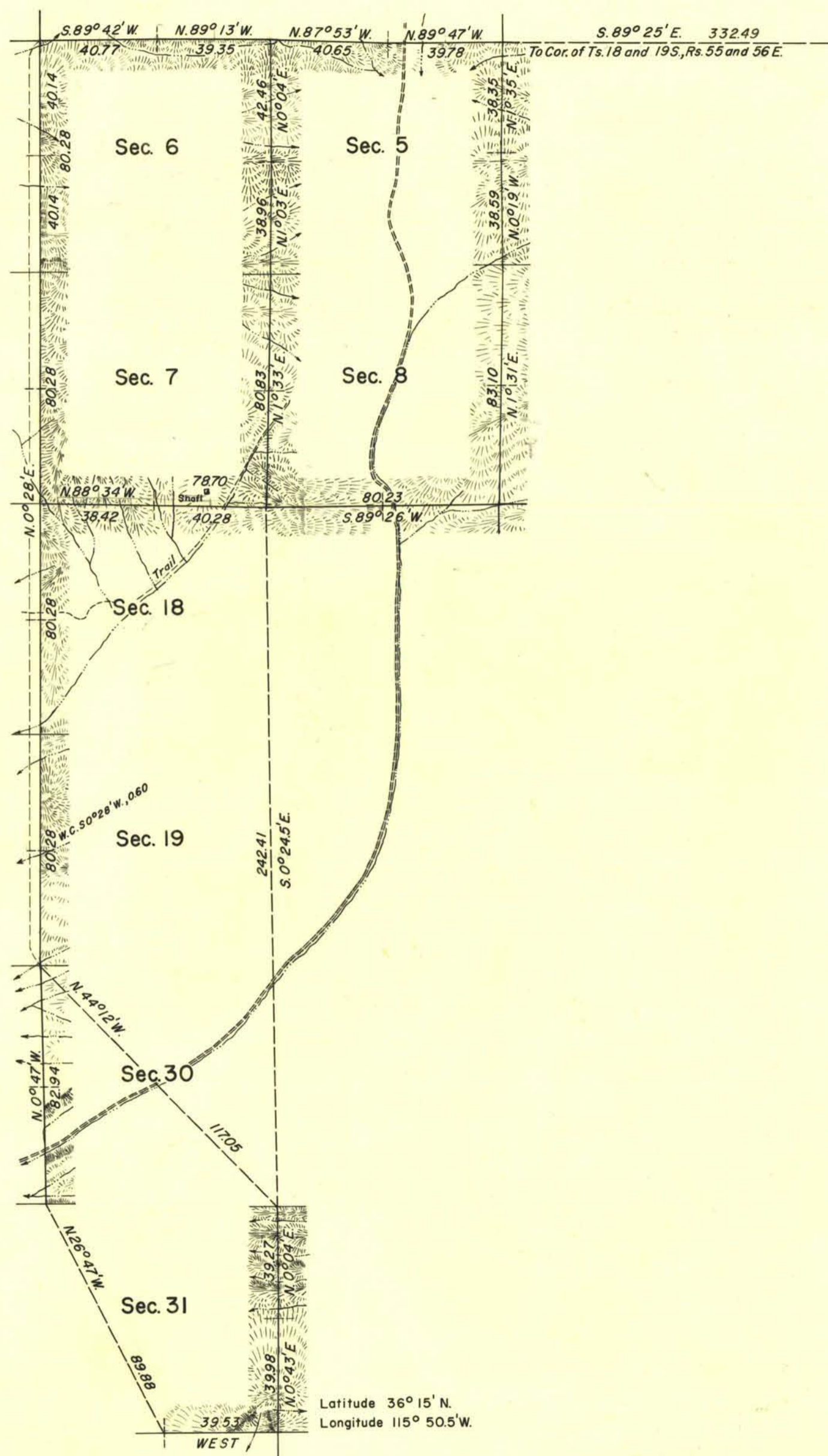


TOWNSHIP 19 SOUTH, RANGE 55 EAST, MOUNT DIABLO MERIDIAN, NEVADA

DEPENDENT RESURVEY



The East boundary of the township was surveyed by E. B. Monroe in 1869 and dependently resurveyed by A. Nelson and C. S. Swanholm in 1934. The South, West, and North boundaries and subdivisional lines were surveyed by Theodore Binge in 1881.

This plat represents a dependent resurvey of portions of the South, West, and North boundaries and a portion of the subdivisional lines of T. 19 S., R. 55 E., Mount Diablo Meridian, Nevada, designed to restore the corners in their original locations according to the best available evidence. Lottings and areas are as shown on plat approved October 14, 1881.

Survey executed by Wilson McConkie May 2 to 25, 1942 under special instructions dated February 2, 1940 for Group 186, Nevada.

UNITED STATES DEPARTMENT OF THE INTERIOR
BUREAU OF LAND MANAGEMENT
Washington, D. C. December 3, 1956

This plat is strictly conformable to the approved field notes, and the survey, having been correctly executed in accordance with the requirements of law and the regulations of this Bureau, is hereby accepted.

For the Director
Earl G. Harrington
Cadastral Engineering Staff Officer