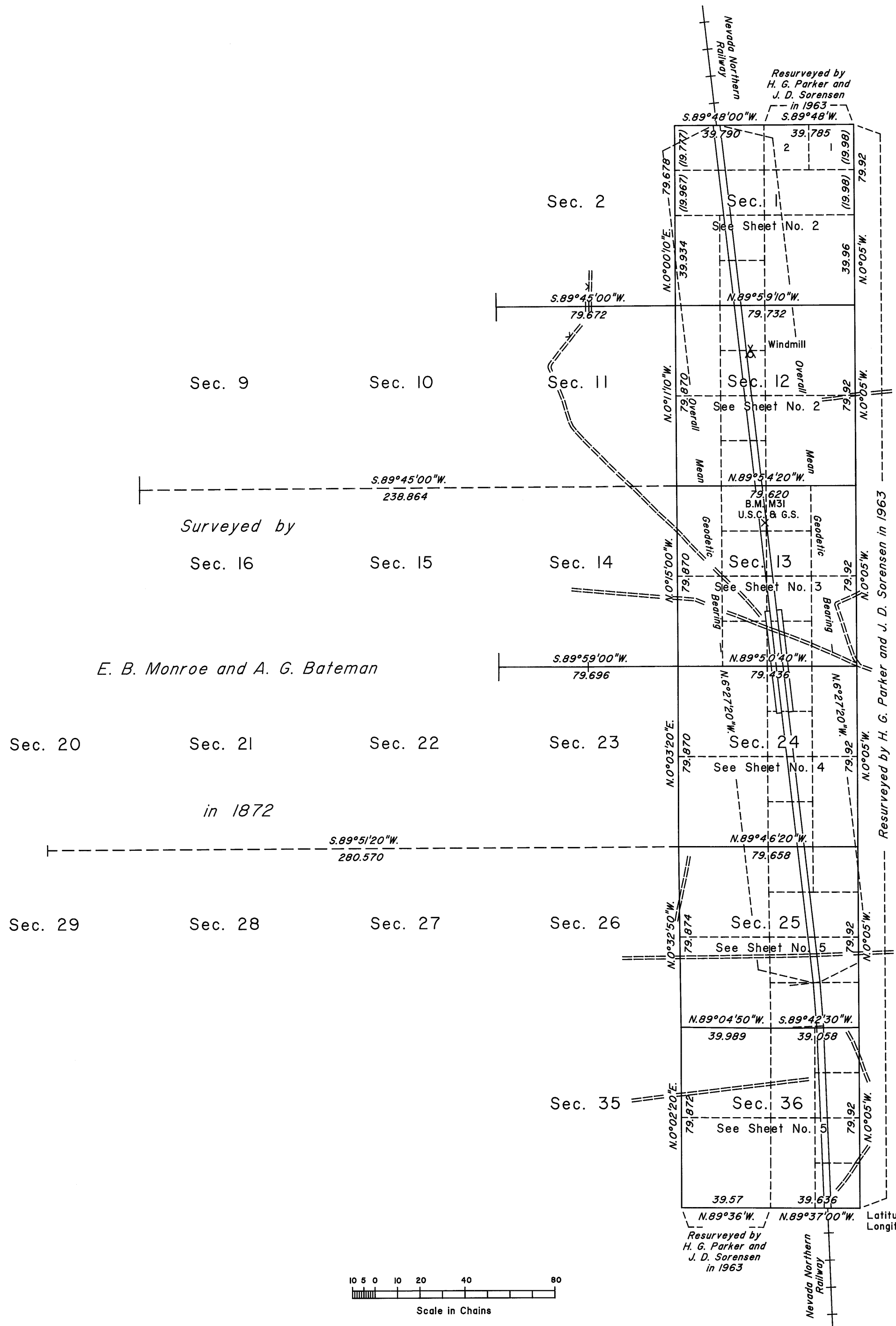
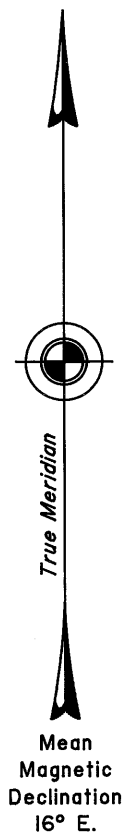


TOWNSHIP 19 NORTH, RANGE 63 EAST, OF THE MOUNT DIABLO MERIDIAN, NEVADA
DEPENDENT RESURVEY AND METES-AND-BOUNDS SURVEY

OFFICIALLY FILED
NEVADA STATE OFFICE
at 10:00 AM on February 4, 2010



A history of surveys is contained in the field notes.

This plat, in five sheets, represents the dependent resurvey of portions of the south and north boundaries and a portion of the subdivisional lines designed to restore the corners in their true original locations according to the best available evidence, metes-and-bounds surveys of Tracts 37 and 38, and metes-and-bounds surveys of the easterly and westerly right-of-way lines of the Nevada Northern Railway through sections 1, 12, 13, 24, 25 and 36, Township 19 North, Range 63 East, Mount Diablo Meridian, Nevada.

Except as indicated hereon, the lottings and areas are as shown on the plat approved June 15, 1872.

Survey executed by Douglas A. Potts, Cadastral Surveyor, and Clay W. Morrow, Surveying Technician, beginning July 17, 2006, and completed December 3, 2009, pursuant to Special Instructions dated July 11, 2006, for Group No. 840, Nevada.

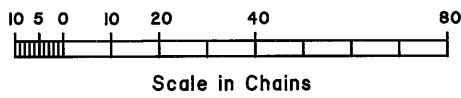
UNITED STATES DEPARTMENT OF THE INTERIOR
BUREAU OF LAND MANAGEMENT

Reno, Nevada February 2, 2010

This plat is strictly conformable to the approved field notes, and the survey, having been correctly executed in accordance with the requirements of law and the regulations of this Bureau, is hereby accepted.

For the Director

Chief Cadastral Surveyor, Nevada



Latitude 39°27'48.045"N.
Longitude 114°49'27.044"W.
NAD 83 (CORS 96)

T.19N., R.63E., M.D.M.