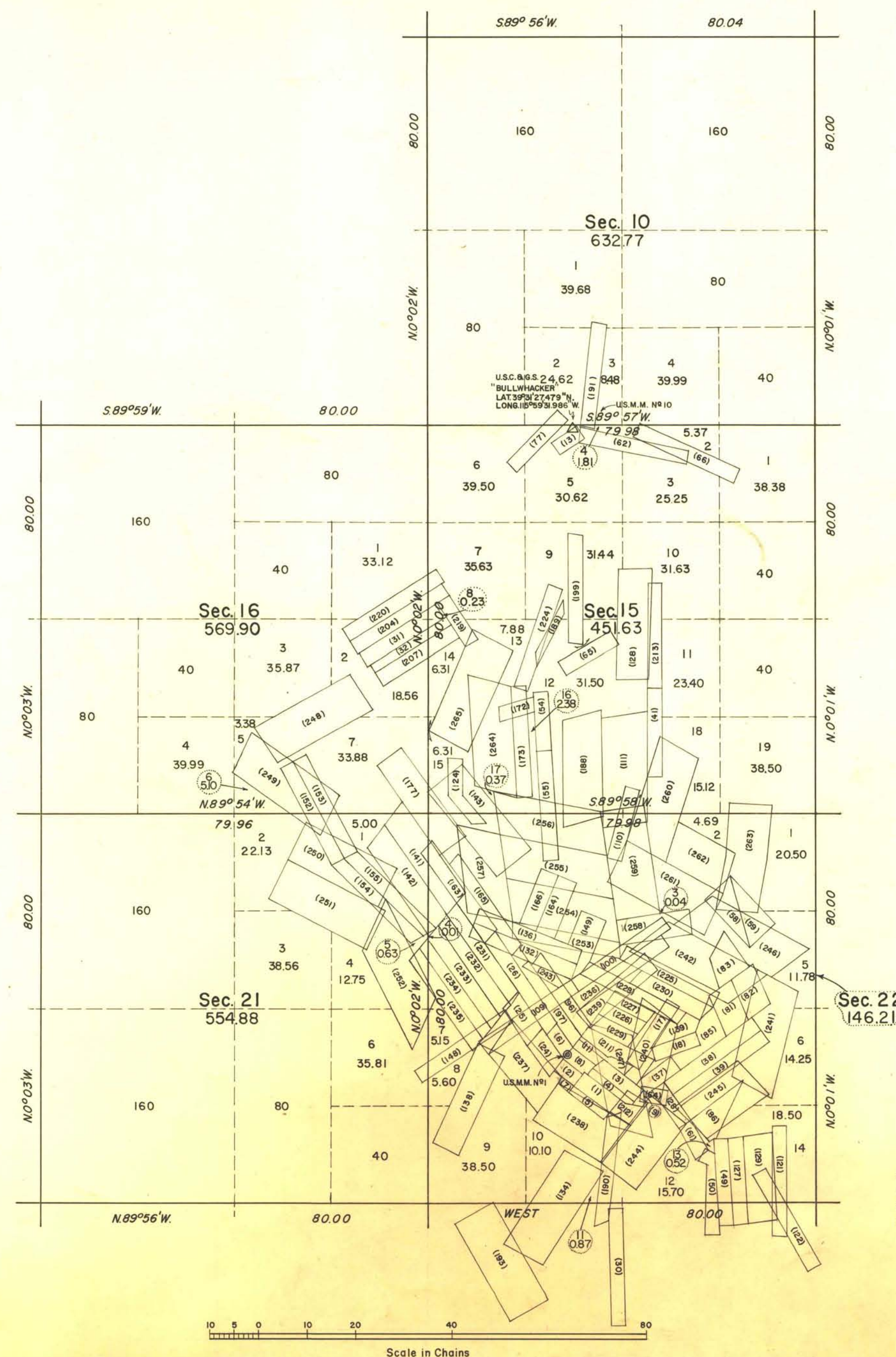
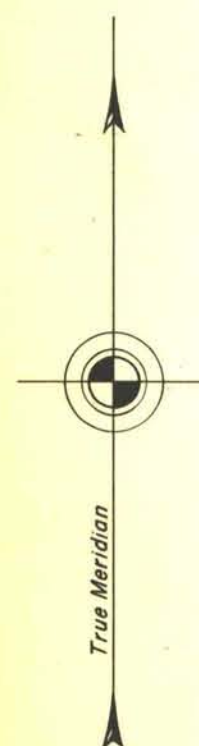


TOWNSHIP 19 NORTH, RANGE 53 EAST, OF THE MOUNT DIABLO MERIDIAN, NEVADA.

SEGREGATION PLAT OF SECTIONS 10, 15, 16, 21, AND 22



UNITED STATES DEPARTMENT OF THE INTERIOR
BUREAU OF LAND MANAGEMENT
Washington, D. C. May 13, 1958

This plat is strictly conformable to the approved field notes, and the survey, having been correctly executed in accordance with the requirements of law and the regulations of this Bureau, is hereby accepted.

For the Director

Earl G. Harrington
Cadastral Engineering Staff Officer