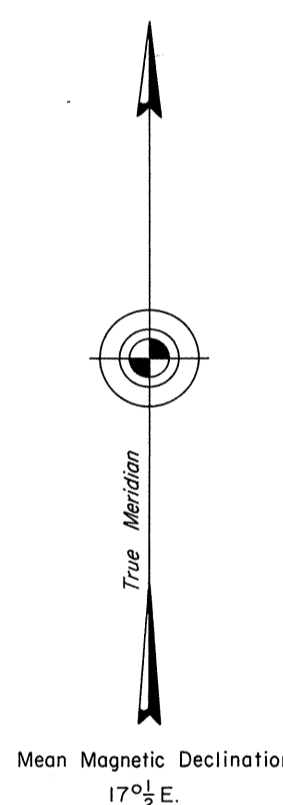
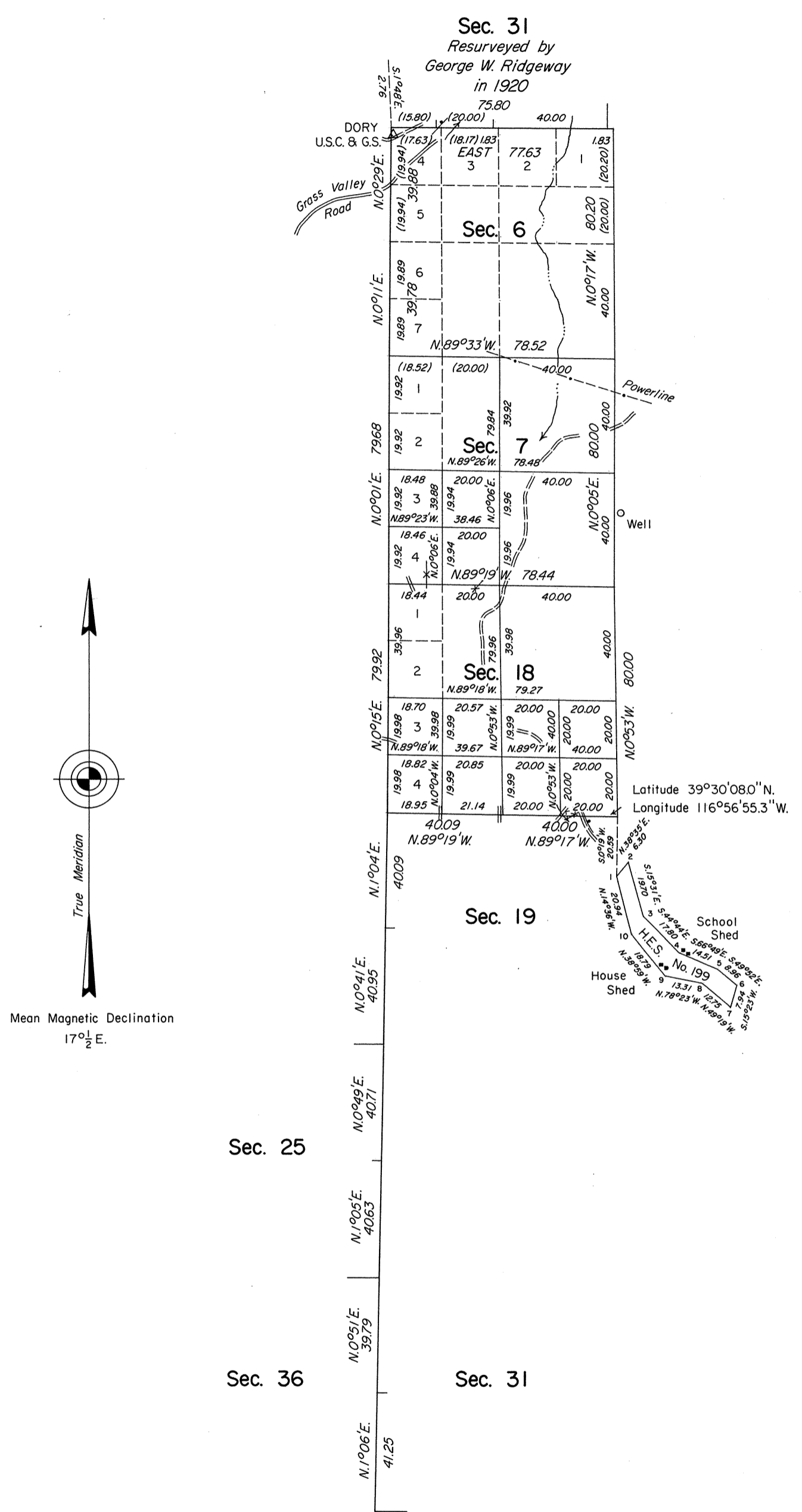


TOWNSHIP 19 NORTH, RANGE 45 EAST, OF THE MOUNT DIABLO MERIDIAN, NEVADA

DEPENDENT RESURVEY AND SUBDIVISIONS



A history of surveys is contained in the field notes.

A dependent resurvey of the west boundary was executed concurrently under T. 19 N., R. 44 E., of this same group.

This plat represents the dependent resurvey of a portion of the subdivisional lines and Homestead Entry Survey No. 199 designed to restore the corners in their true original locations according to the best available evidence, and the subdivision of secs. 7 and 18, T. 19 N., R. 45 E., Mount Diablo Meridian, Nevada.

The lottings and areas are as shown on the plat approved October 25, 1875.

Survey executed by Neil R. Forsyth and James M. McNeely, Cadastral Surveyors, beginning August 30, 1979, and completed October 24, 1979, pursuant to Special Instructions dated May 2, 1979, for Group No. 573, Nevada.

UNITED STATES DEPARTMENT OF THE INTERIOR
BUREAU OF LAND MANAGEMENT
Denver, Colorado December 11, 1981

This plat is strictly conformable to the approved field notes, and the survey, having been correctly executed in accordance with the requirements of law and the regulations of this Bureau, is hereby accepted.

For the Director

Mary S. Spaight

Acting Chief, Cadastral Survey
Examination and Approval Staff

