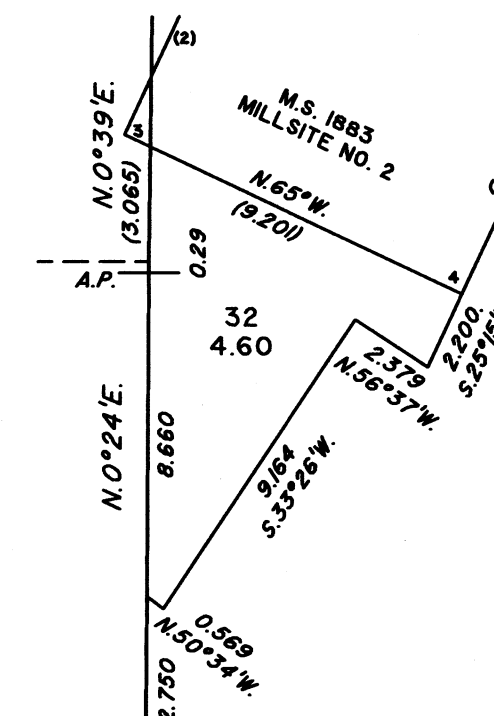
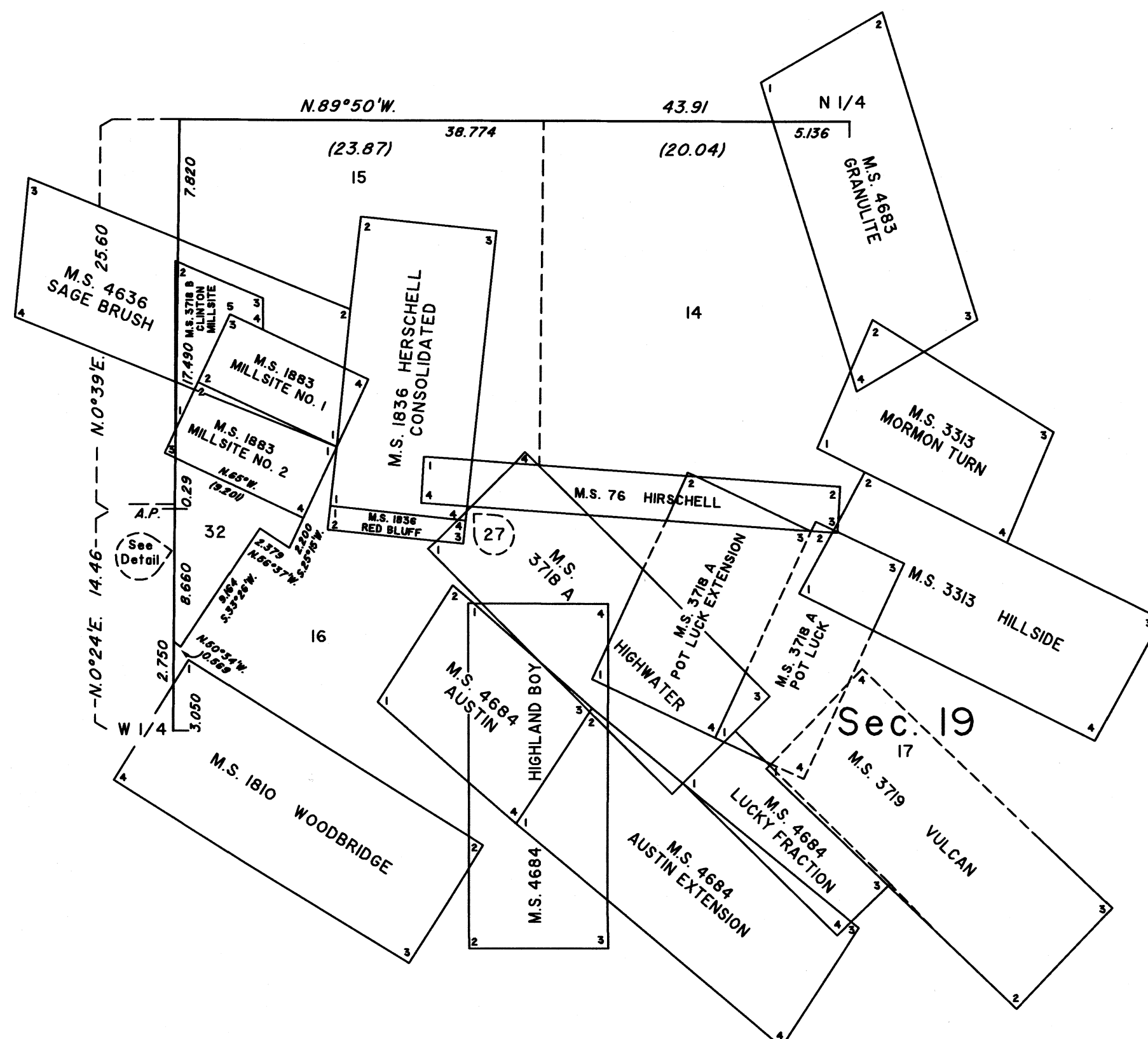


TOWNSHIP 19 NORTH, RANGE 44 EAST, OF THE MOUNT DIABLO MERIDIAN, NEVADA
SUPPLEMENTAL PLAT OF NW 1/4 SECTION 19

DETAIL
Not to Scale



Resurveyed by A. D. Griffin and J. D. Sorensen in 1964



This plat, showing new lottings as a result of that portion of the cancellation of Mineral Survey No. 3721B, Clifton Mill Site, lying in section 19, Township 19 North, Range 44 East, Mount Diablo Meridian, Nevada, is based upon the plat approved March 4, 1910, the plats accepted May 4, 1965, December 22, 1987, and July 7, 2006, and the mineral survey records.

Plat prepared under the direction of Lucas T. Beauchamp, Cadastral Surveyor, beginning March 26, 2025, and completed May 21, 2025, pursuant to Special Instructions dated March 26, 2025, and Assignment Instructions dated March 26, 2025, for Group No. 1025, Nevada.

The data shown in parentheses are derived by calculation.

Except as shown hereon, the lottings and areas are as shown on the plat approved March 4, 1910, and the plats accepted May 4, 1965, December 22, 1987, and July 7, 2006.

UNITED STATES DEPARTMENT OF THE INTERIOR
BUREAU OF LAND MANAGEMENT

Reno, Nevada May 22, 2025

This plat, showing new lottings, is based upon the official records and, having been correctly prepared in accordance with the requirements of law and the regulations of this Bureau, is hereby accepted.

For the Director

Clarence D. Strickland
Chief Cadastral Surveyor, Nevada

