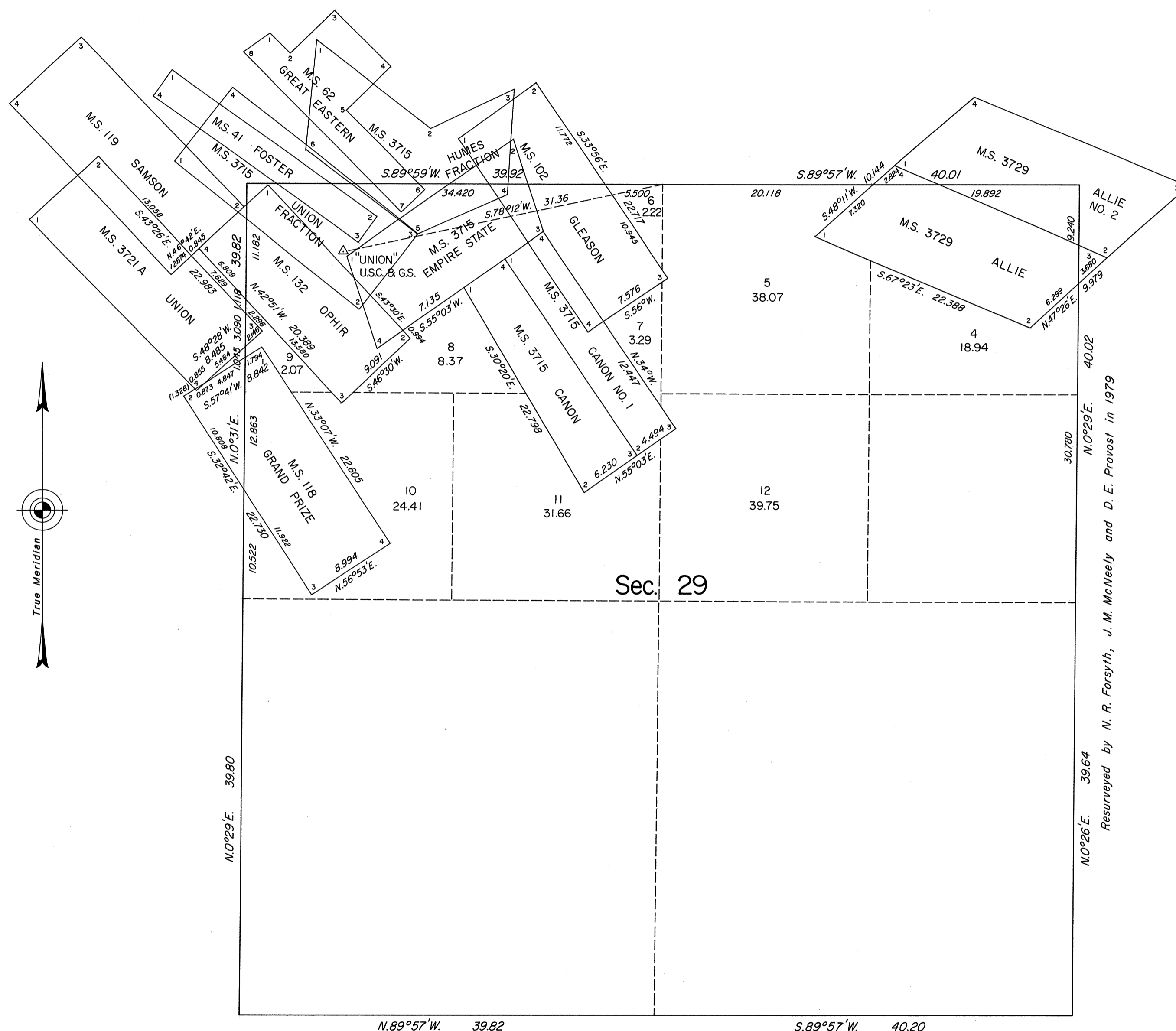


ORIGINAL

Sheet No. 10 of 12 Sheets

TOWNSHIP 19 NORTH, RANGE 44 EAST, OF THE MOUNT DIABLO MERIDIAN, NEVADA

ENLARGED DIAGRAM OF SECTION 29



Reference should be made to Sheet No. 1 for survey information.

UNITED STATES DEPARTMENT OF THE INTERIOR
BUREAU OF LAND MANAGEMENT

Reno, Nevada December 22, 1987

This plat is strictly conformable to the approved field notes, and the survey, having been correctly executed in accordance with the requirements of law and the regulations of this Bureau, is hereby accepted.

For the Director

Lucel E. Bland

Chief Cadastral Surveyor

