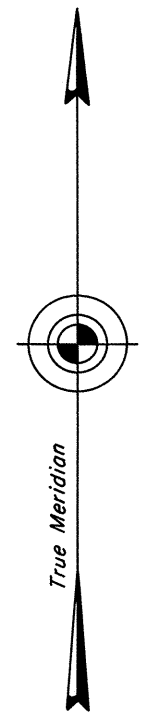


ORIGINAL

Sheet No. 7 of 12 Sheets

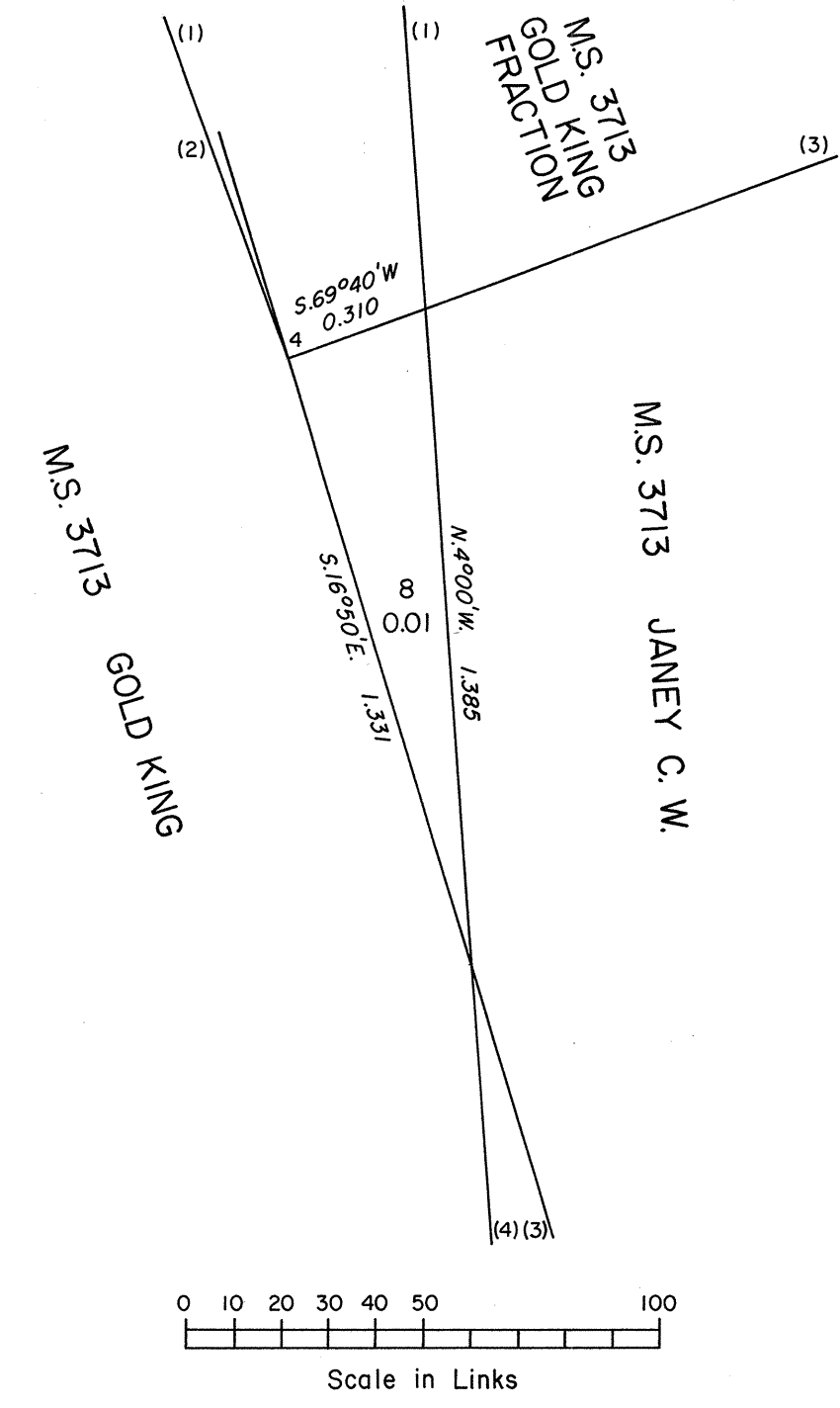
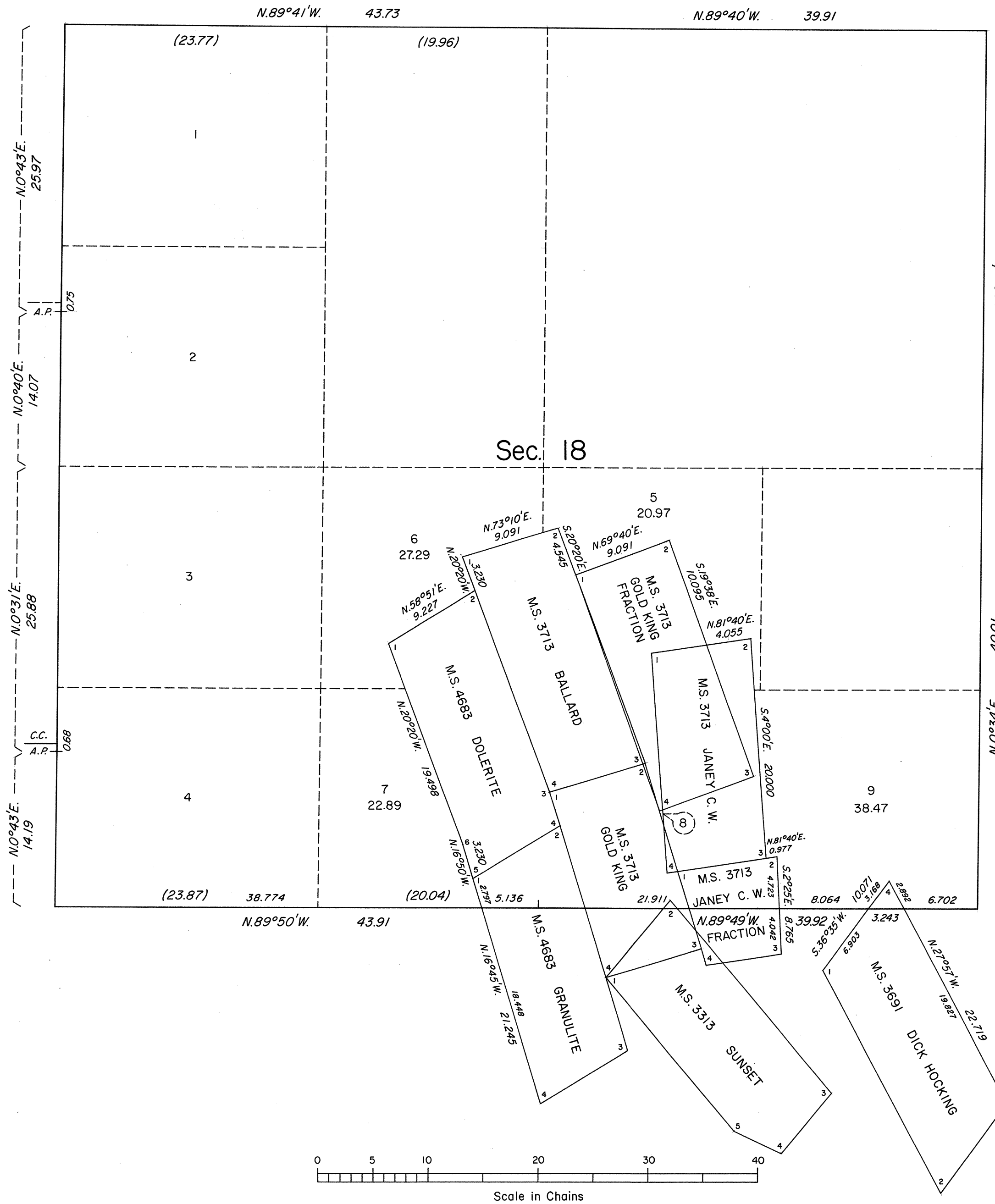
TOWNSHIP 19 NORTH, RANGE 44 EAST, OF THE MOUNT DIABLO MERIDIAN, NEVADA
 ENLARGED DIAGRAM OF SECTION 18

ENLARGED DIAGRAM OF LOT 10



Sec. 13

Resurveyed by A. D. Griffin and J. D. Sorensen in 1964



Reference should be made to Sheet No. 1 for survey information.

UNITED STATES DEPARTMENT OF THE INTERIOR
 BUREAU OF LAND MANAGEMENT

Reno, Nevada December 22, 1987

This plat is strictly conformable to the approved field notes, and the survey, having been correctly executed in accordance with the requirements of law and the regulations of this Bureau, is hereby accepted.

For the Director
Lucel E. Bland
 Chief Cadastral Surveyor