

ORIGINAL

Sheet No. 4 of 12 Sheets

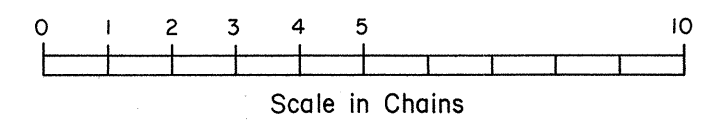
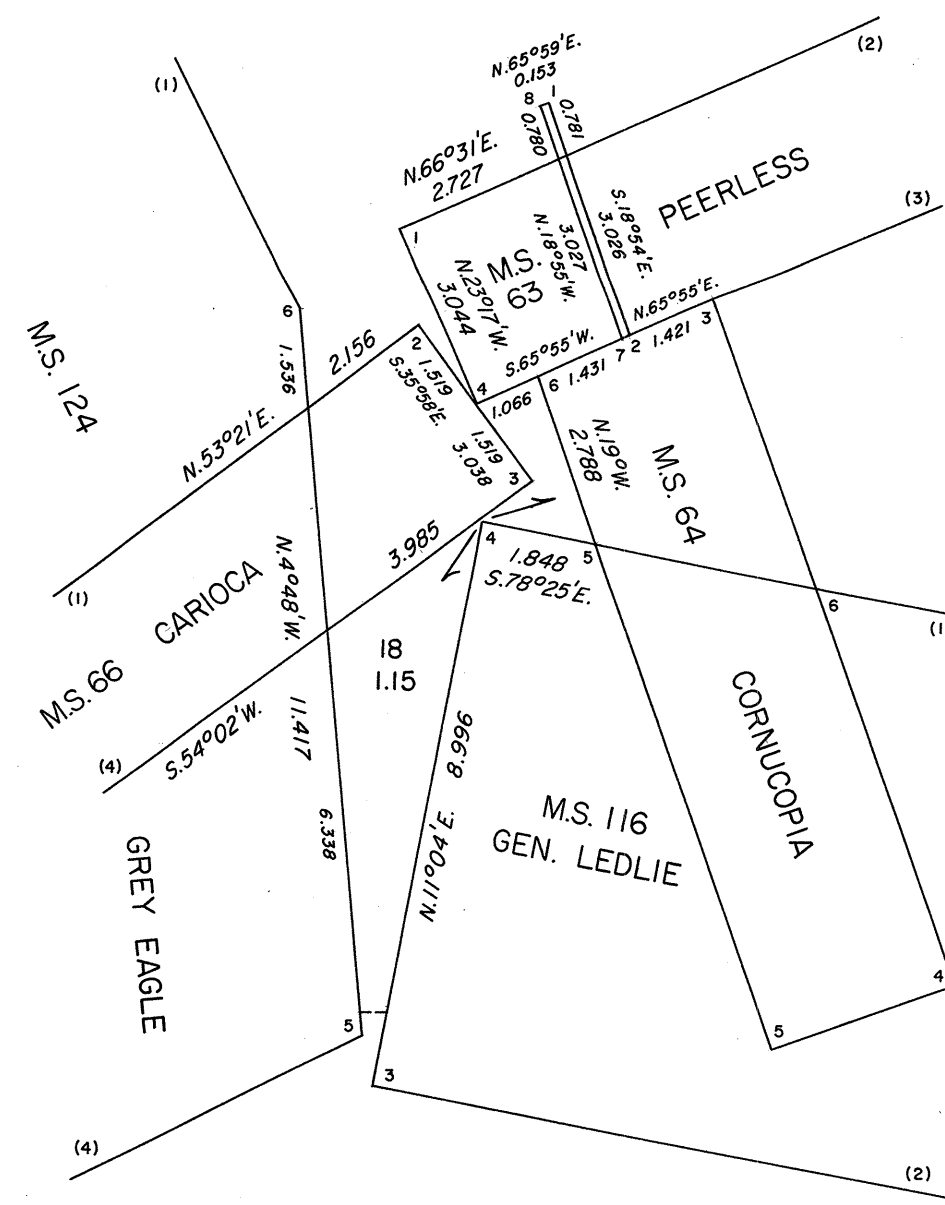
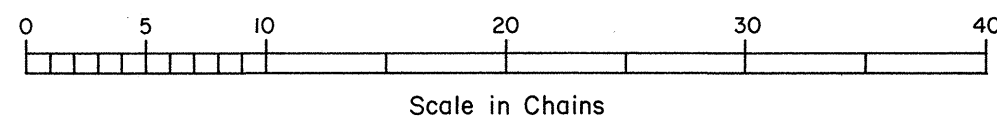
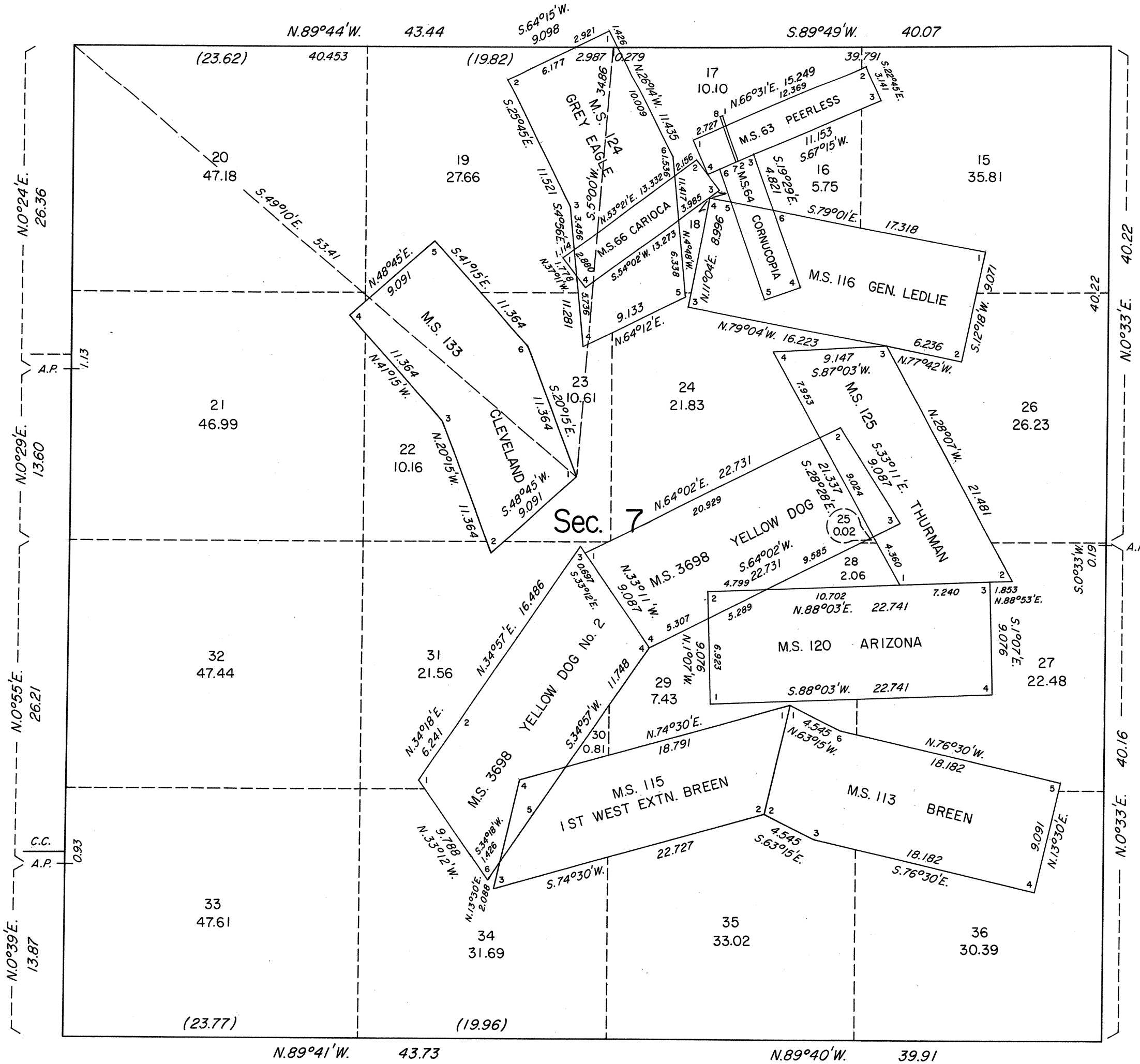
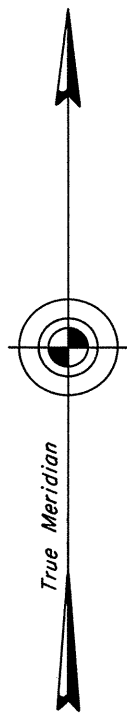
TOWNSHIP 19 NORTH, RANGE 44 EAST, OF THE MOUNT DIABLO MERIDIAN, NEVADA

ENLARGED DIAGRAM OF SECTION 7

ENLARGED DIAGRAM OF LOT 18

Sec. 12

Resurveyed by A. D. Griffin and J. D. Sorensen in 1964



Reference should be made to Sheet No. 1 for survey information.

UNITED STATES DEPARTMENT OF THE INTERIOR
BUREAU OF LAND MANAGEMENT

Reno, Nevada December 22, 1987

This plat is strictly conformable to the approved field notes, and the survey, having been correctly executed in accordance with the requirements of law and the regulations of this Bureau, is hereby accepted.

For the Director
Lacel E. Bland
Chief Cadastral Surveyor

JRM