

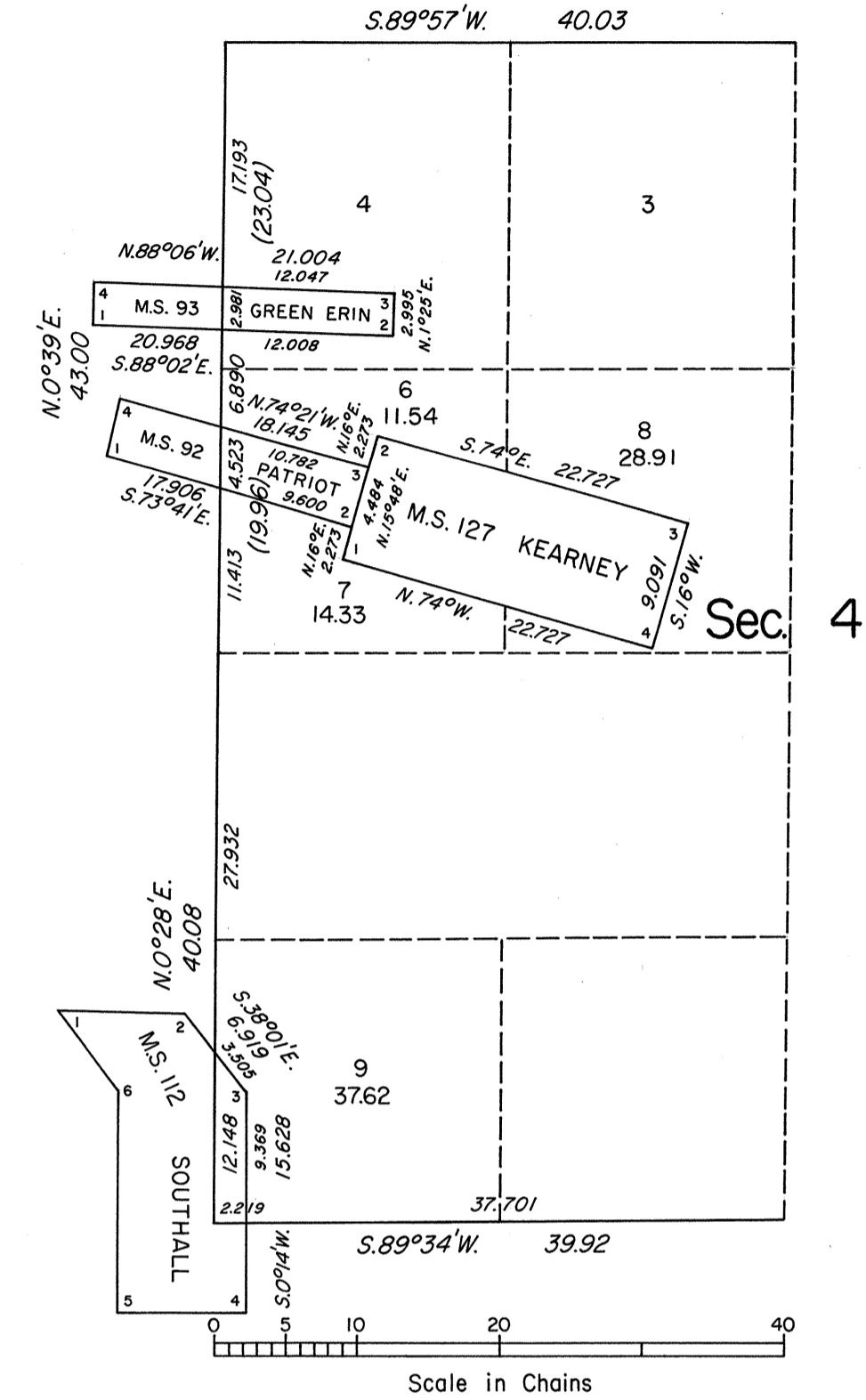
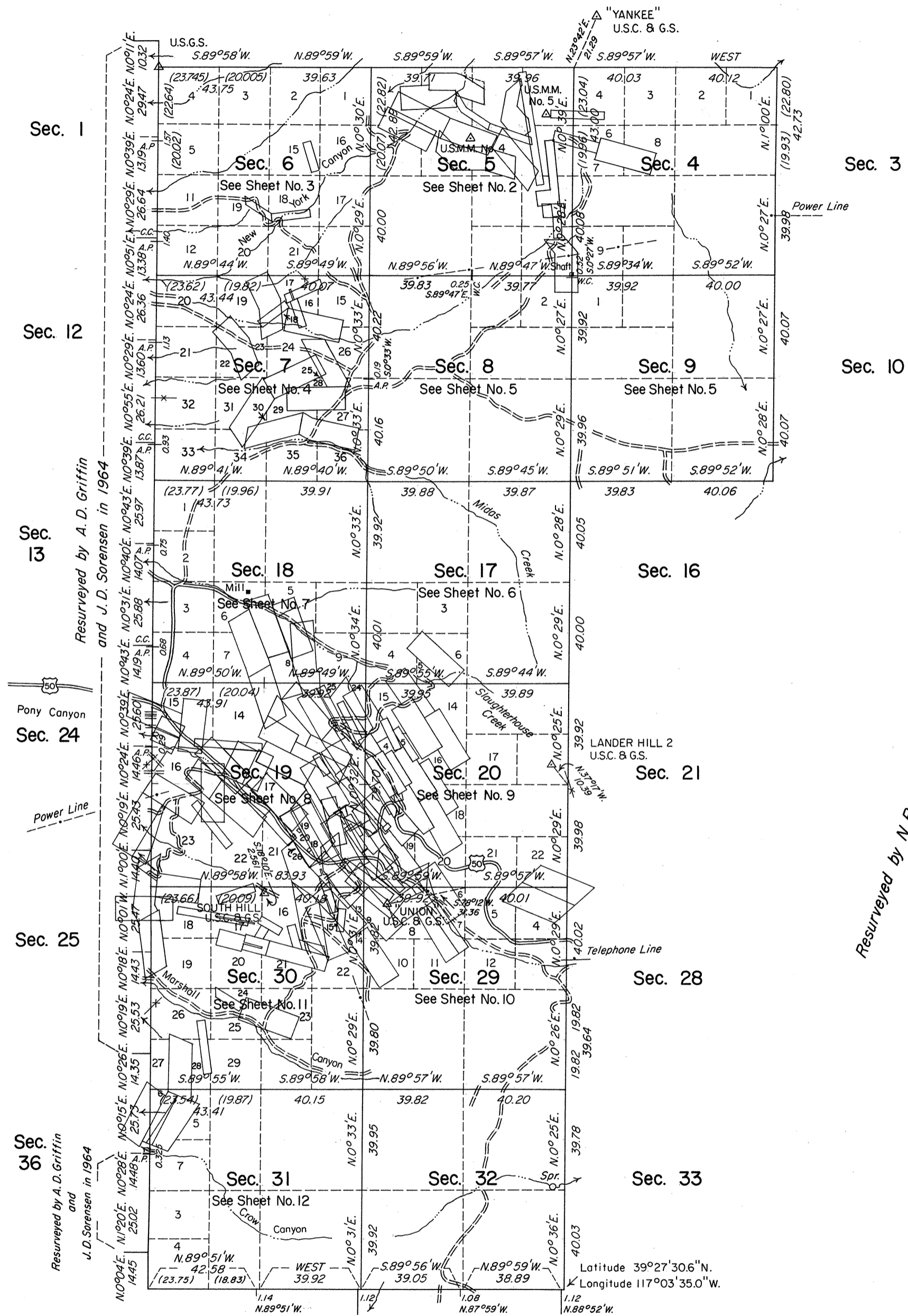
ORIGINAL

Sheet No. 1 of 12 Sheets

TOWNSHIP 19 NORTH, RANGE 44 EAST, OF THE MOUNT DIABLO MERIDIAN, NEVADA

DEPENDENT RESURVEY

ENLARGED DIAGRAM OF W. 1/2 SEC. 4



History of the earlier surveys is contained in the field notes.

This plat, in 12 sheets, represents a dependent resurvey of a portion of the south, west and north boundaries, a portion of the subdivisional lines and certain mineral surveys of T. 19 N., R. 44 E., designed to restore the corners in their original locations according to the best available evidence.

Unless otherwise indicated in the field notes, all courses and distances shown on the plat along the perimeter of the mineral segregation areas were taken or computed from the appropriate mineral survey record.

Areas and lottings, except as shown hereon, are as indicated on the plat approved March 4, 1910 and the plat accepted May 4, 1965.

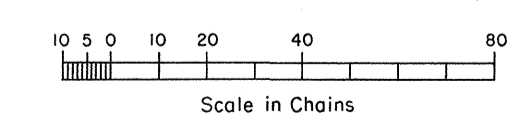
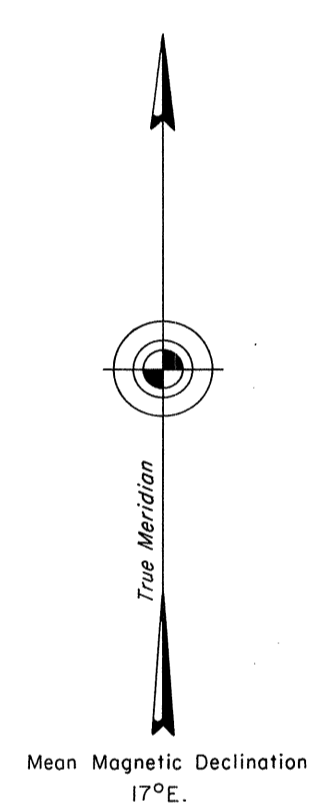
Survey executed by John A. Farmer and Stephen R. Lambeth, Cadastral Surveyors, beginning June 14, 1982 and completed September 15, 1987, under Special Instructions dated May 3, 1982 for Group No. 601, Nevada.

UNITED STATES DEPARTMENT OF THE INTERIOR
BUREAU OF LAND MANAGEMENT
Reno, Nevada December 22, 1987

This plat is strictly conformable to the approved field notes, and the survey, having been correctly executed in accordance with the requirements of law and the regulations of this Bureau, is hereby accepted.

For the Director
Luella E. Bland
Chief Cadastral Surveyor

T.19N., R.44E., M.D.M.



CU

JRM