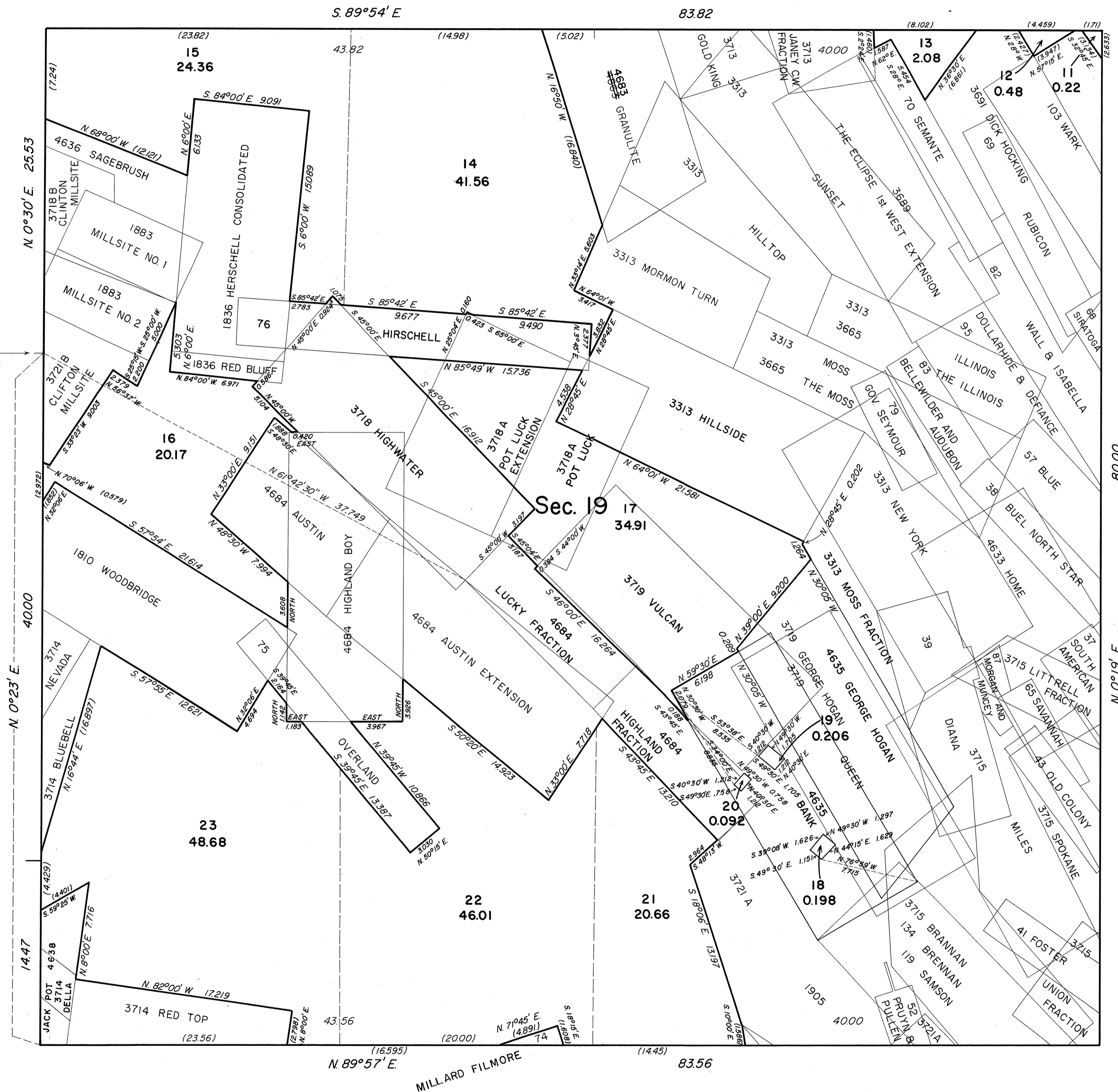


TOWNSHIP 19 NORTH, RANGE 44 EAST, OF THE MOUNT DIABLO MERIDIAN, NEVADA
SUPPLEMENTAL PLAT OF SECTION 19

OFFICIALLY FILED
NEVADA LAND OFFICE
10:00 AM 9/7/1965

This plat, showing amended lottings created by the segregation of certain mineral claims, is based on the plat approved March 4, 1910, and the approved mineral survey records.

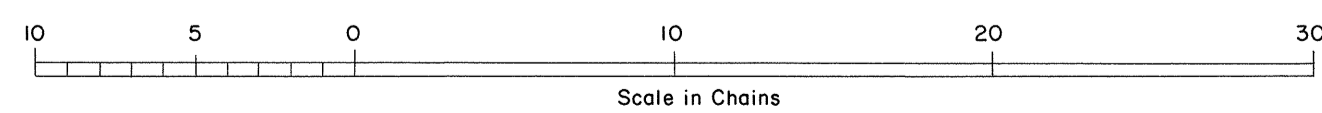


UNITED STATES DEPARTMENT OF THE INTERIOR
BUREAU OF LAND MANAGEMENT
Washington, D. C. May 4, 1965

This plat, showing amended lottings, is based upon the official records, and having been correctly prepared in accordance with the regulations, is hereby accepted.

For the Director

E. J. Huntington
Chief, Division of Engineering



1541-A

T19N R44E - Supl. Sec. 19.