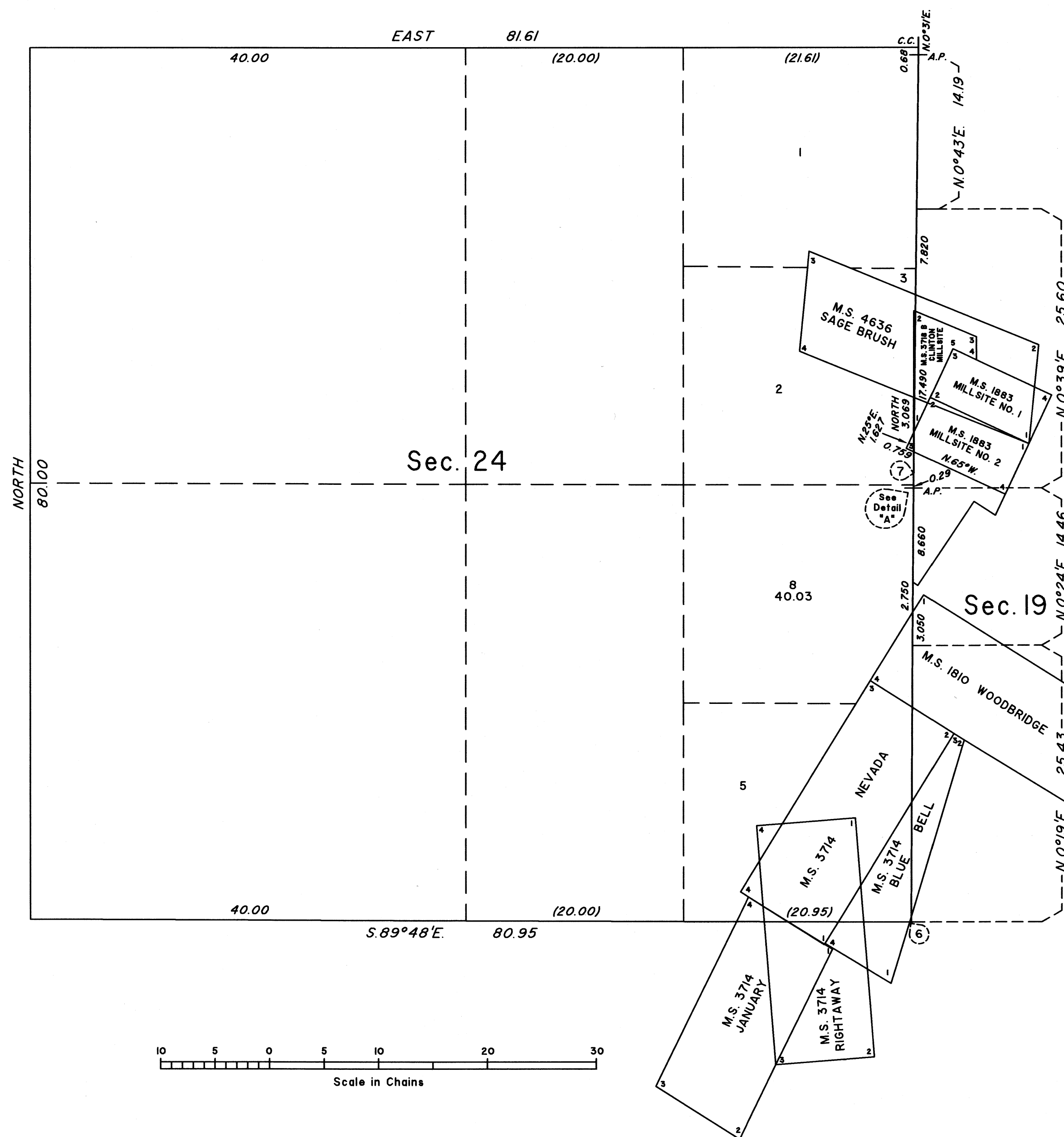


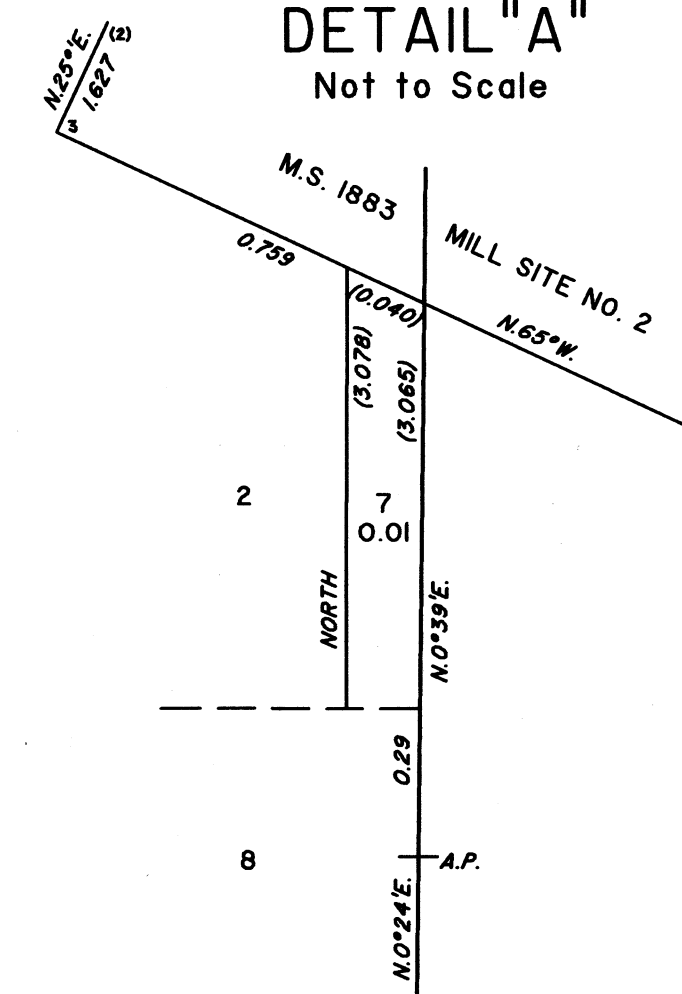
TOWNSHIP 19 NORTH, RANGE 43 EAST, OF THE MOUNT DIABLO MERIDIAN, NEVADA

SUPPLEMENTAL PLAT OF SECTION 24



DETAIL "A"

Not to Scale



This plat, showing new and amended lottings as a result of that portion of the cancellation of Mineral Survey No. 3721B, Clifton Mill Site, lying in section 24, Township 19 North, Range 43 East, Mount Diablo Meridian, Nevada, and correcting certain distances along Mineral Survey No. 1883, Mill Site No. 2, is based upon the plat accepted November 2, 1967, and the mineral survey records.

Plat prepared under the direction of Lucas T. Beauchamp, Cadastral Surveyor, beginning April 3, 2025, and completed May 21, 2025, pursuant to Special Instructions dated March 26, 2025, and Assignment Instructions dated March 26, 2025, for Group No. 1024, Nevada.

The data shown in parentheses are derived by calculation.

Except as shown hereon, the lottings and areas are as shown on the plat accepted November 2, 1967.

UNITED STATES DEPARTMENT OF THE INTERIOR
BUREAU OF LAND MANAGEMENT

Reno, Nevada May 22, 2025

This plat, showing new and amended lottings, is based upon the official records and, having been correctly prepared in accordance with the requirements of law and the regulations of this Bureau, is hereby accepted.

For the Director

Clarence D. Strickland

Chief Cadastral Surveyor, Nevada