

TOWNSHIP 19 NORTH, RANGE 43 EAST, OF THE MOUNT DIABLO MERIDIAN, NEVADA

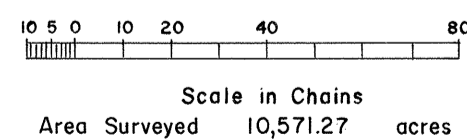
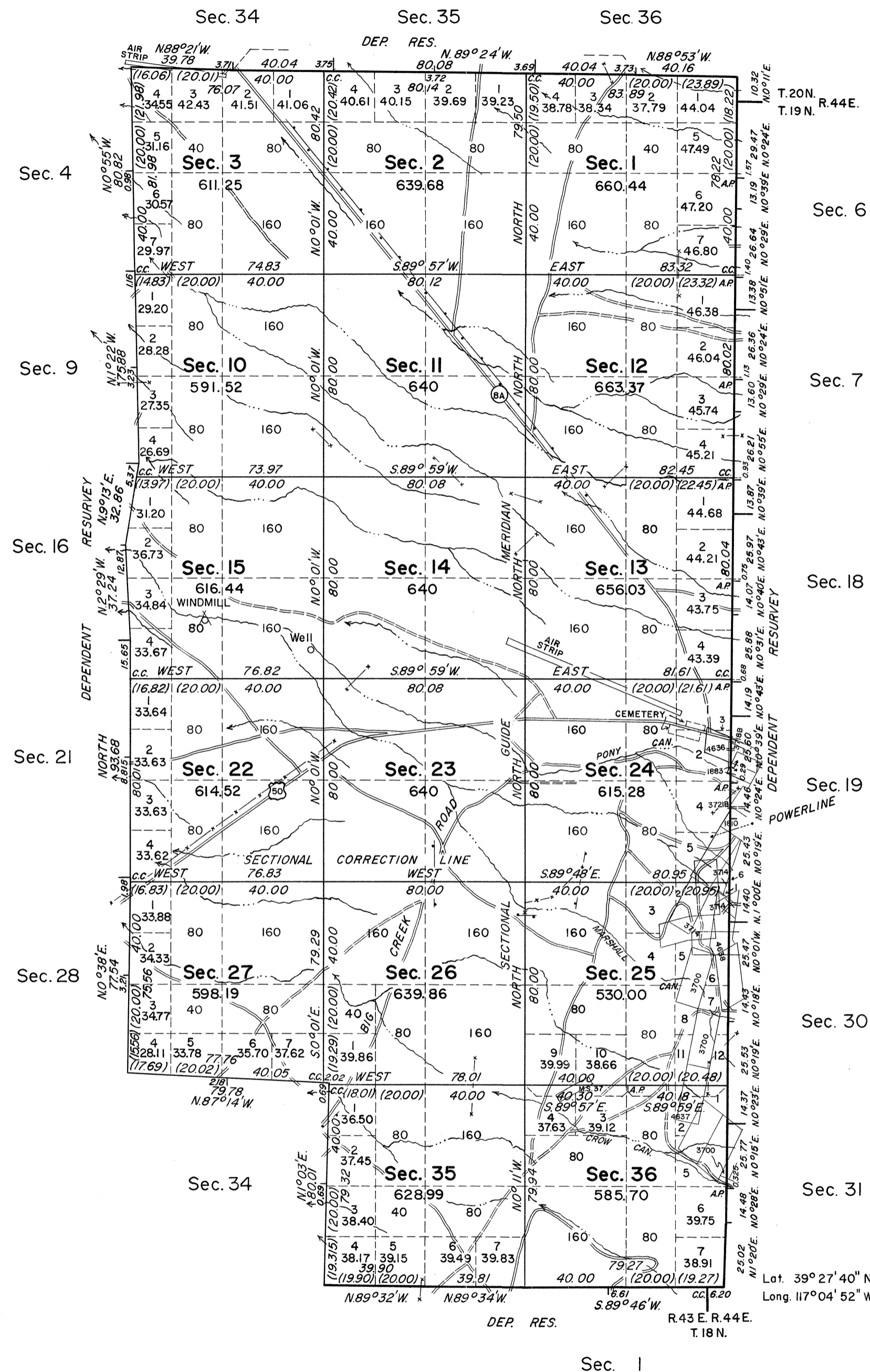
OFFICIALLY FILED  
NEVADA LAND OFFICE  
10:00 AM MAR. 29, 1968

NOTE: Sections 5, 6, 7 of this Tp are UNSURVEYED but are covered by PROTRACTION DIAGRAM # 218

Surveyed by  
C.C. Tracy  
in  
1868



Magnetic Declination  
17° E.



History of the earlier surveys is contained in the field notes.

This plat represents a dependent resurvey of a portion of the south boundary of T. 20N., R. 43E., the east boundary and portions of the south boundary and subdivisional lines, and the survey of a portion of the subdivisional lines completing the subdivision. The resurvey was designed to restore all corners in their true original locations according to the best available evidence.

Survey executed by Alburn D. Griffin and John D. Sorensen, Cadastral Surveyors, August 18, 1964, to October 23, 1964, under Special Instructions dated August 11, 1964, for Group No. 414, Nevada.

Unless otherwise indicated in the field notes, all courses and distances, shown on the plat along the perimeter of the mineral segregation areas, were taken from the appropriate mineral survey record.

See Sheets 2, 3, and 4, for enlarged sections 24, 25, and 36.

UNITED STATES DEPARTMENT OF THE INTERIOR  
BUREAU OF LAND MANAGEMENT  
Washington, D. C. November 2, 1967

This plat is strictly conformable to the approved field notes, and the survey, having been correctly executed in accordance with the requirements of law and the regulations of this Bureau, is hereby accepted.

For the Director

*R.E. Brown*

Acting Chief, Division of Engineering

T. 19N., R. 43E.