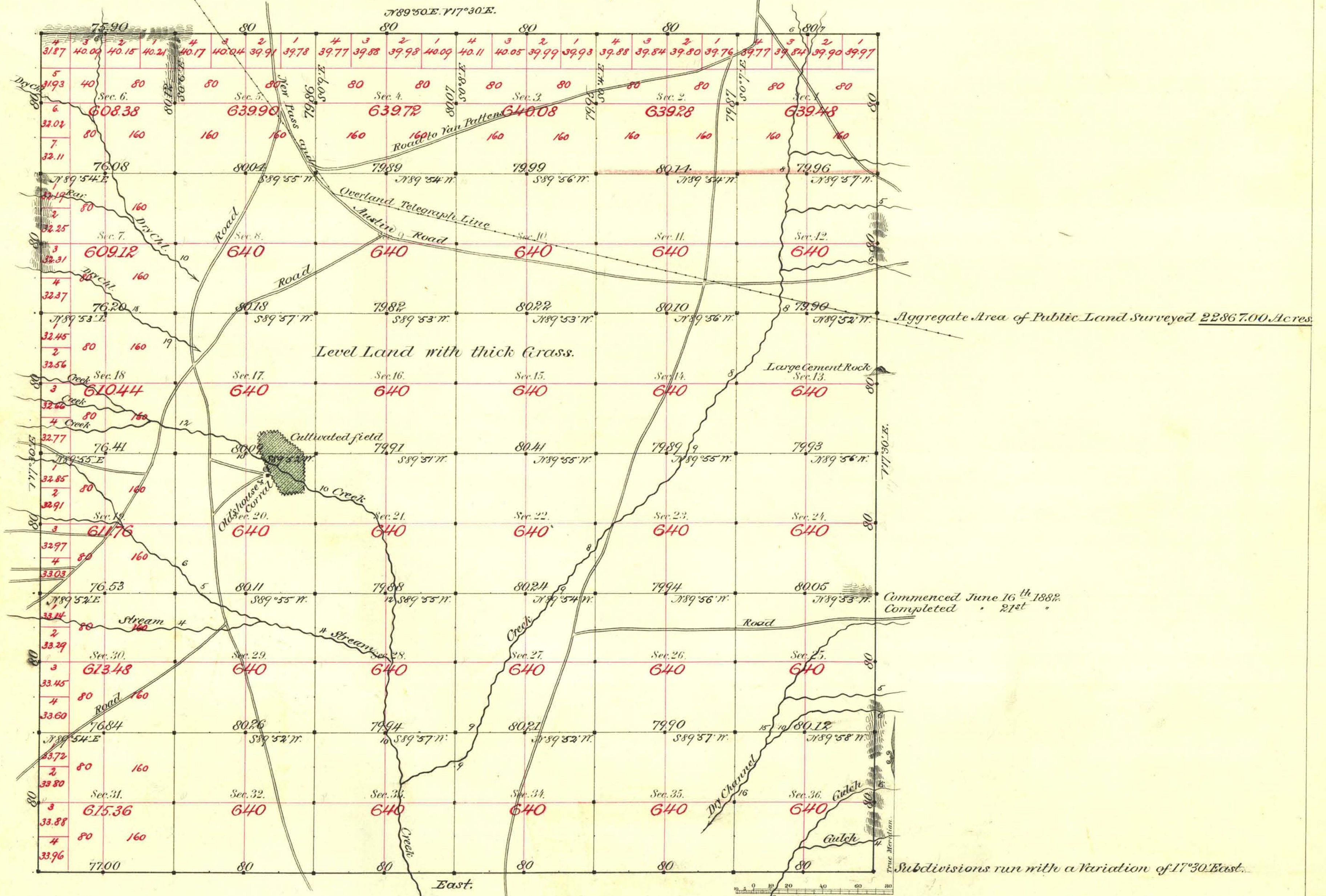


TOWNSHIP N^o 19 NORTH RANGE N^o 40 EAST MOUNT DIABLO MERIDIAN



Aggregate Area of Public Land Surveyed 22867.00 Acres.

Commenced June 16th 1882
Completed 21st

Subdivisions run with a variation of 17°30' East.

Surveys Designated	By Whom Surveyed	Date of Contract	Amount of Surveys	When Surveyed	N ^o Cor.
West Boundary	Barker & McClellan	July 15 th 1879	16-30-80	1879	89
D.E.&S.	Stewart & Conkling	Nov. 14 th 1881	17-72-90	1881	132
Subdivisions	E.L. Bridges	May 25 th 1882	59-63-05	June 1882	133

The above Map of Township N^o 19 North of Range N^o 40 East of Mt. Diablo Meridian is strictly conformable to the field notes of the survey thereof on file in this Office, which have been examined and approved.

Surveyor General's Office,
Reno, Nevada

Sept 28th 1882

E. L. Paris
Sur. Gen. Nevada