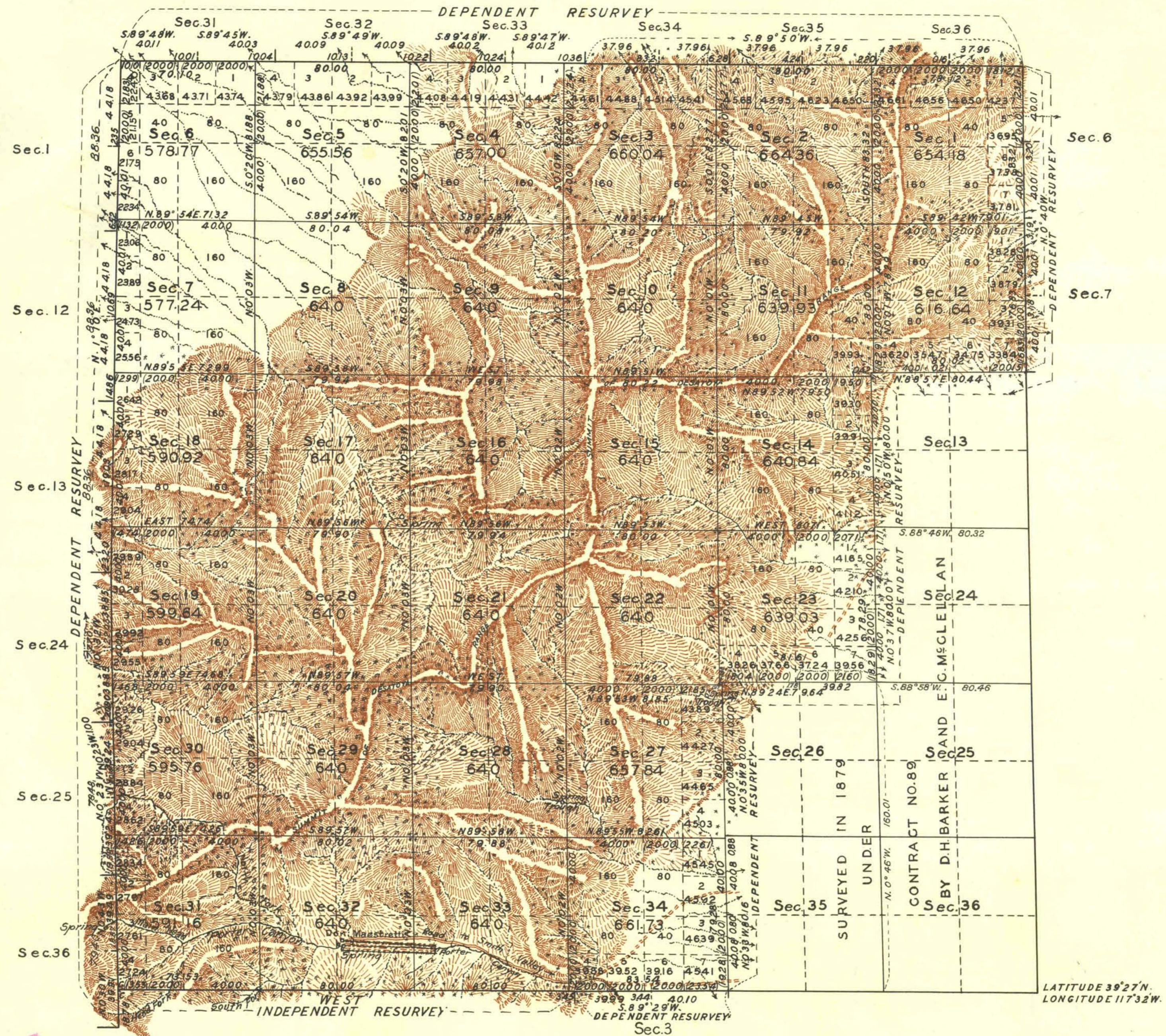


TOWNSHIP N^o 19 NORTH, RANGE N^o 39 EAST OF THE MOUNT DIABLO MERIDIAN, NEVADA.



Scale: 40 Chains to an Inch. Area Surveyed 19,000.64 Acres.

LINES DESIGNATED	BY WHOM SURVEYED	GROUP NO.	DATE		MILEAGE		WHEN SURVEYED	
			NO.	DATE	MLS.	CHS.	BEGUN	COMPLETED
Exterior	George W. Ridgway	116	Nov. 8,	1923.	18	05.99	Oct. 21,	1929
Subdivisional	D. H. Barker and E. C. McClellan	89	July 15,	1879	53	6248	23	Sept. 10,
Exterior			1879	1879.				
Subdivisional	D. H. Barker and E. C. McClellan

Office of U.S. Supervisor of Surveys
 Denver, Colorado, July 9, 1931.
 The above plat of Township No. 19 North, Range No. 39 East of the Mount Diablo Base and Meridian, Nevada is strictly conformable to the field notes of the survey thereof which have been examined and approved

Wm. H. Johnson
 U.S. Supervisor of Surveys

DEPARTMENT OF THE INTERIOR

GENERAL LAND OFFICE

Washington, D.C., Sept. 22, 1931

The survey represented by this plat having been correctly executed in accordance with the requirements of law and the regulations of this office, is hereby accepted

J. H. Cannon
 Acting Assistant Commissioner