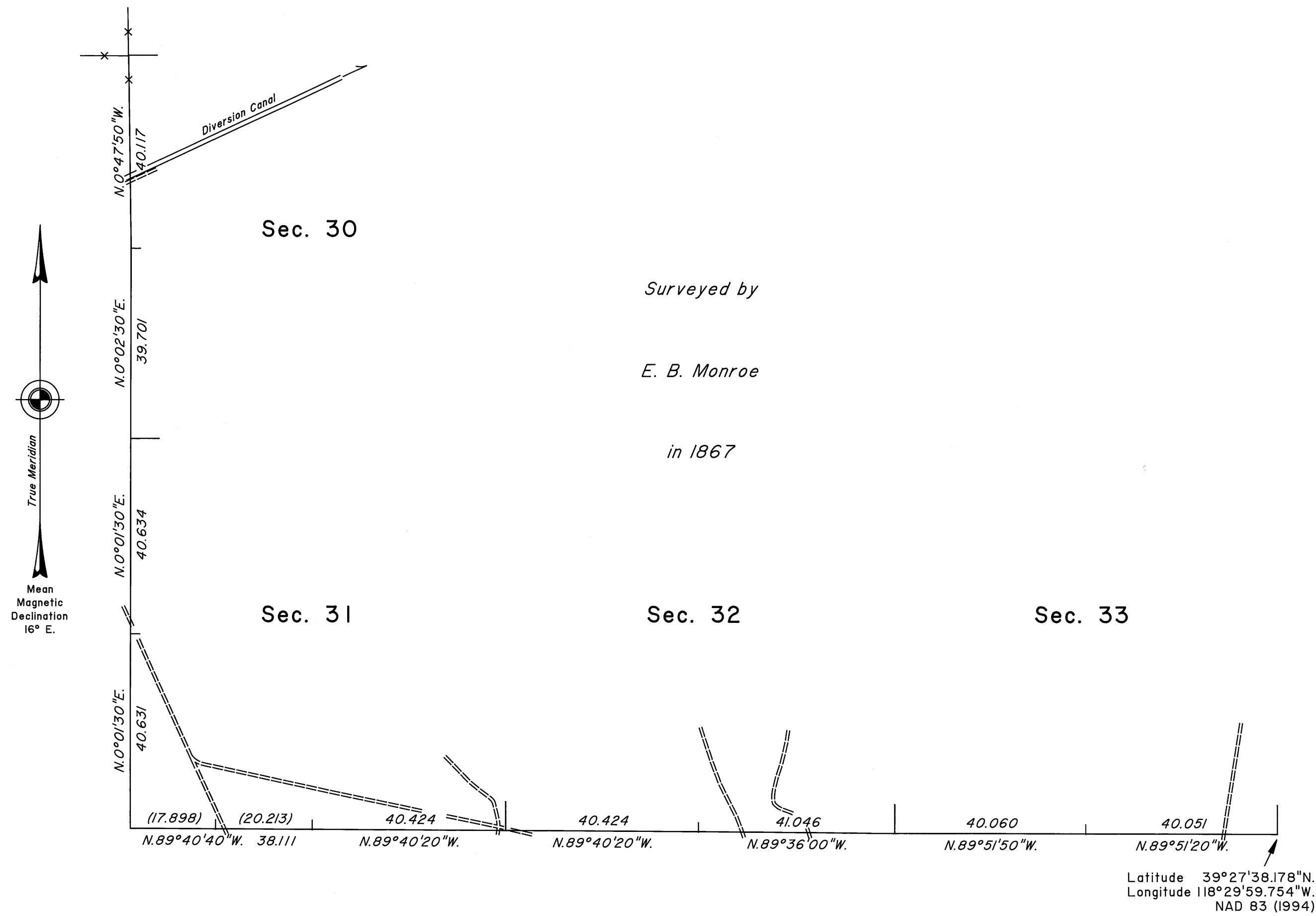


TOWNSHIP 19 NORTH, RANGE 31 EAST, OF THE MOUNT DIABLO MERIDIAN, NEVADA  
DEPENDENT RESURVEY



A history of surveys is contained in the field notes.

This plat represents the dependent resurvey of portions of the south and west boundaries designed to restore the corners in their true original locations according to the best available evidence, Township 19 North, Range 31 East, Mount Diablo Meridian, Nevada.

Survey executed by Lance A. Barney, Cadastral Surveyor, beginning August 22, 2007, and completed August 29, 2007, pursuant to Special Instructions dated August 15, 2007, for Group No. 858, Nevada.

UNITED STATES DEPARTMENT OF THE INTERIOR  
BUREAU OF LAND MANAGEMENT

Reno, Nevada October 9, 2008

This plat is strictly conformable to the approved field notes, and the survey, having been correctly executed in accordance with the requirements of law and the regulations of this Bureau, is hereby accepted.

For the Director

*David H. Moran*

Chief Cadastral Surveyor, Nevada

