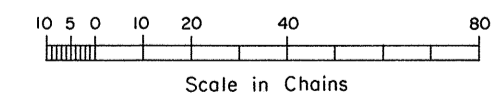
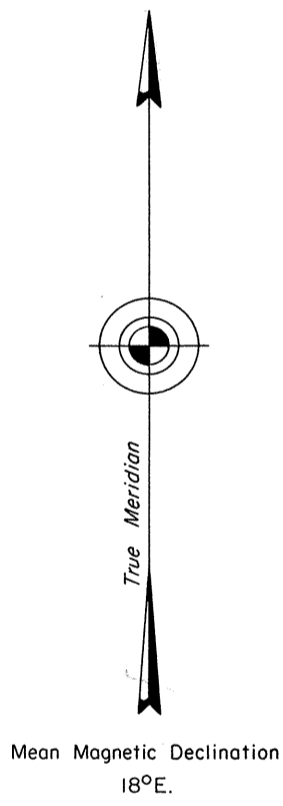
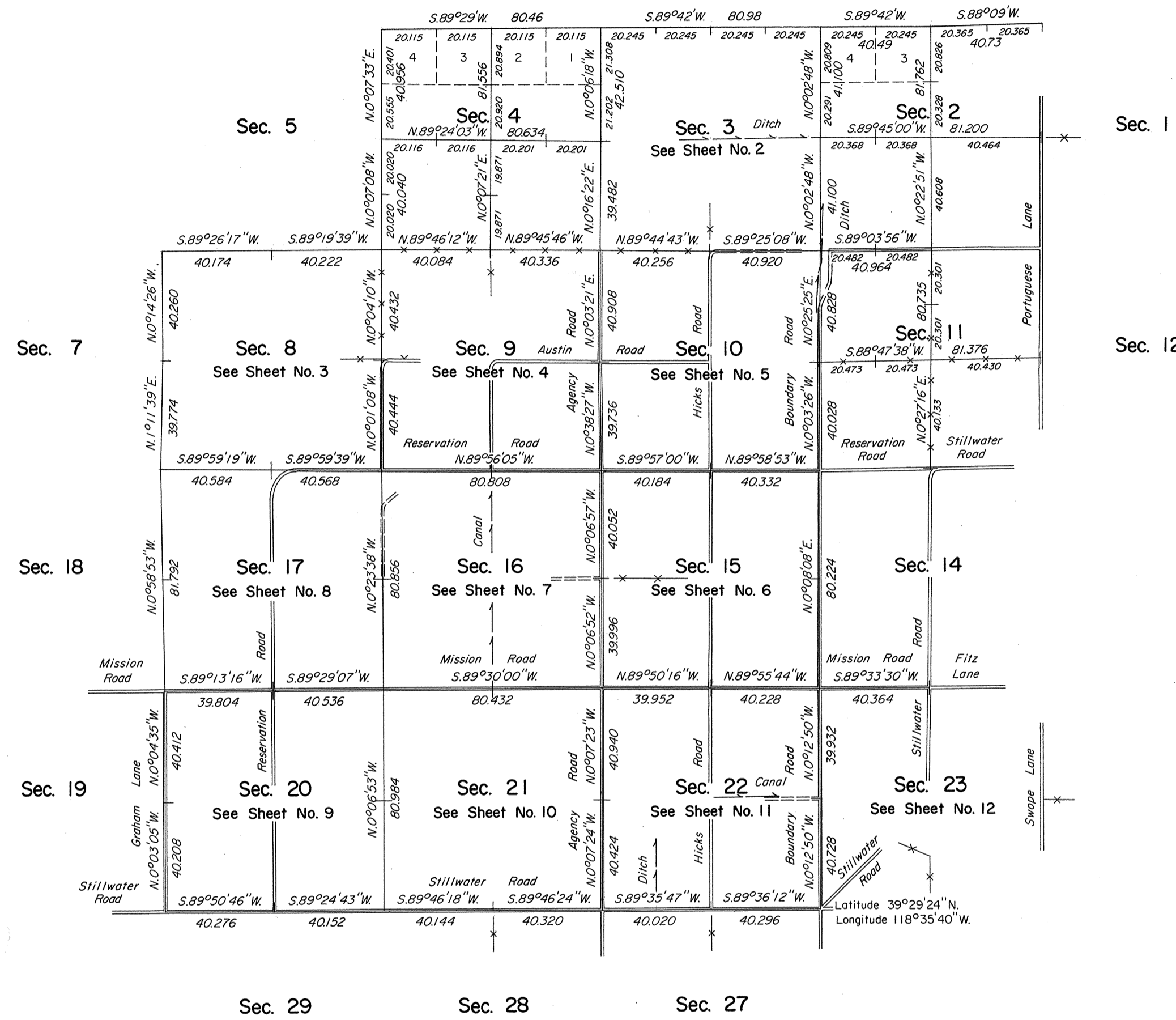


# TOWNSHIP 19 NORTH, RANGE 30 EAST, OF THE MOUNT DIABLO MERIDIAN, NEVADA

## DEPENDENT RESURVEY AND SUBDIVISIONS

OFFICIALLY FILED  
NEVADA STATE OFFICE  
Aug 18, 1980



History of the earlier surveys is contained in the field notes.

A portion of the north boundary was dependently resurveyed concurrently under T. 20 N., R. 30 E., of this same group.

This plat, in 12 sheets, represents a dependent resurvey of a portion of the subdivisional lines designed to restore the corners in their original locations according to the best available evidence, and the survey of the subdivision of certain sections and Tract 37, T. 19 N., R. 30 E., Mount Diablo Meridian, Nevada. See sheet nos. 2 thru 12 for enlargements of sections, 3, 8, 9, 10, 15, 16, 17, 20, 21, 22 and 23.

Lottings and areas are as shown on the plat approved October 16, 1868.

Survey executed by Neil R. Forsyth, Ronald E. Williams, and David E. Provost, Cadastral Surveyors, beginning October 12, 1978, and completed February 5, 1979, under Special Instructions dated October 2, 1978, for Group No. 568, Nevada.

UNITED STATES DEPARTMENT OF THE INTERIOR  
BUREAU OF LAND MANAGEMENT  
Denver, Colorado July 24, 1980

This plat is strictly conformable to the approved field notes, and the survey, having been correctly executed in accordance with the requirements of law and the regulations of this Bureau, is hereby accepted.

For the Director

Chief, Cadastral Survey  
Examination and Approval Staff

Surveyed by E. B. Monroe in 1868

63

66